



Exclusive Condominium Partner  
of TIFF Bell Lightbox™

***In the heart of Toronto's World Class Entertainment District and steps from TIFF Bell Lightbox™ Daniels introduces the next generation in film-inspired living – CINEMA TOWER is under construction and will soon rise as a sleek and dramatic tower within Toronto's iconic skyline.***

### **Suite Features**

- 9' ceiling heights in main living areas
- A selection of engineered wood flooring in the hallway, bedroom(s), living/dining room, study, kitchen, foyer and foyer closet.
- Gourmet kitchens feature Irpinia kitchen cabinetry, quartz countertops, porcelain mosaic tile backsplash and a complete MIELE kitchen appliance package including refrigerator, dishwasher, oven, cooktop and microwave.
- Bathroom(s) include comfort height Irpinia cabinetry, quartz countertop with undermount porcelain sink, deep soaker tub and a decorative vanity mirror with metal shelf.
- Each suite includes an "All-OFF" switch so residents can turn off all the overhead lights with the flick of a switch.
- Suite hydro is individually metered using "Smart Meter" technology

### **Building Features**

- A dramatic 43-storey steel and glass tower features a striking six storey podium and a unique curved roof line
- Two-storey Lobby includes a 24-hour Concierge to welcome residents and guests overseeing the sophisticated building security measures
- The exterior entrance of the Lobby is framed by a stunning sculptural metaphor – "Strata". Created by internationally renowned artist Peter Powning, "Strata" will act as a canopy over the entrance and will fuse an eclectic grouping of artefacts cast in bronze and illuminated aquifer veins made of reflecting slumped glass
- Located on the sixth floor, Club Cinémathèque offers residents a sophisticated level of unprecedented amenities including:
  - The Urban Terrace Lounge – a central gathering space with cozy outdoor seating, an alfresco kitchen, bbq areas, a tranquility rock fountain and incredible views of the city.
  - The Party Room – a place to gather with friends and celebrate in style in an exclusive venue, complete with a catering kitchen, bar, lounge seating, and a direct connection to the Urban Terrace Lounge.
  - The Screening Room – enjoy a private screening in this state-of-the-art professionally designed Screening Room, with genuine theatre quality sound and plush seating.
  - Full Court Gymnasium – a complete sports and wellness destination offering a full court gym with the ability to accommodate everything from kickboxing to basketball games. Plus, there is a direct connection to the outdoor sun deck.
  - The Fitness Studio – offers residents a full range of state-of-the-art cardio and weight training equipment and has a designated yoga and Pilates zone. After a workout, residents will enjoy relaxing in the indoor steam room and hot tub.
  -

### **TIFF Bell Lightbox™ Interconnectivity Package**

One of the most exciting advantages to owning a new home at Cinema Tower is the unique connection to TIFF Bell Lightbox. The exclusive perks and privileges include:

- 3-year membership\* to TIFF Bell Lightbox – including the opportunity to purchase tickets to the Toronto International Film Festival before the public.
- A resident's only screening at TIFF Bell Lightbox with special guests from the world of film in attendance.
- Director's Series screenings hosted by TIFF within Cinema Tower's state-of-the-art Screening Room and much more...

Specifications subject to change without notice. \* Certain conditions, restrictions and blackout periods apply. Please see Sales Representative for full details. E. & O.E.



Exclusive Condominium Partner  
of TIFF Bell Lightbox™

## VIP AGENT PREVIEW PRICING ONE-DAY-ONLY

(Subject to availability)

MODEL:	LEVEL:	TYPE:	APPROXIMATE SUITE SIZE (SQ.FT.)	EXPOSURE:	VIP AGENT PRICES FROM:
The Cameron	8 to 41	Studio / 1b	421	North	\$304,900
The Hitchcock**	7 to 43	1 Bed / 1b	536	East	\$376,900
The Welles	7 to 43	1 Bed / 1b / Int	622	North	\$390,900
The Scorsese**	7 to 43	1 Bed / 1b	585	East	\$404,900
The Scott	7 to 43	1 Bed / 1b	617	South	\$434,900
The Capra	7 to 40	1 Bed + Study/ 1b	634	West	\$452,900
The Allen	7 to 43	1 Bed + Study / 1b	661	North	\$453,900
The Coppola	7 to 43	1 Bed / 1b	651	South East	\$461,900
The Spielberg**	7 to 43	1 Bed + Study / 2b	683	North East	\$481,900
The Lucas	7 to 43	1 Bed + Study / 2b	692	West	\$489,900
The Nolan	8 to 41	2 Bed / 2b	845	North West	\$592,900
The Tarantino	7 to 40	2 Bed / 2b	869	South West	\$631,900
The Bergman	8 to 43	3 Bed / 2b	1,290	North West	\$897,900
The Brooks	7 to 43	3 Bed + Study / 2b	1,503	South West	\$1,084,900

Prices increase approximately \$1,000 per floor. \*\*Premiums apply to 7<sup>th</sup> floor terrace units.

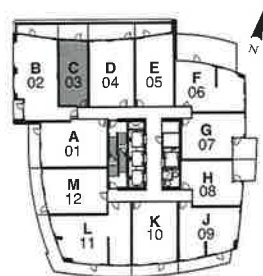
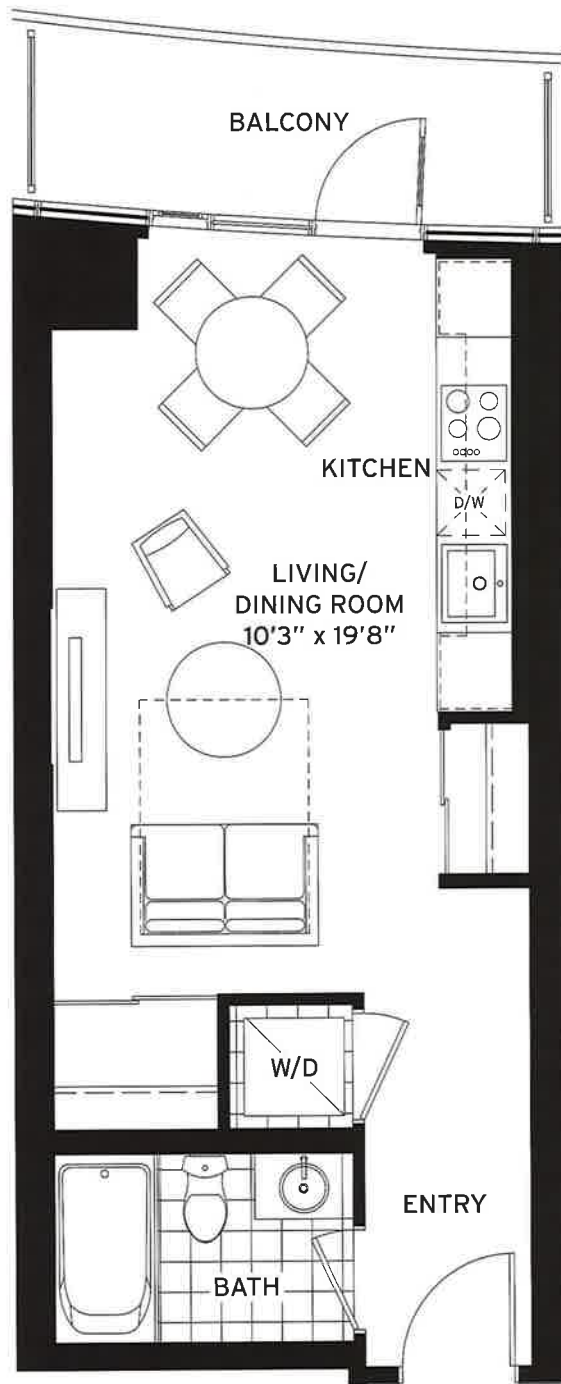
<p><b>Deposit Structure</b> \$4,500 with Agreement of Purchase &amp; Sale Balance of 5% in 30 days 5% in 90 days 5% in 180 days 5% on Occupancy</p> <p>Occupancy Commencing: <b>Summer 2013</b></p> <p>One Parking space: \$45,000 One Locker: \$4,000</p> <p>*Suites over 650 sq.ft. may purchase parking. Parking is available on The Coppola model from floors 18 and above.</p>	<p><b>Maintenance</b> Approximately \$0.52 per square foot (Hydro metered separately)</p> <p>Parking Maintenance fee - \$65.00/ month Locker Maintenance fee - \$15.00/month</p> <p><b>Taxes</b> Estimated at approximately 1% of Purchase Price</p> <p><b>Prices Include H.S.T.</b></p>
-----------------------------------------------------------------------------------------------------------------------------------------------------------------------------------------------------------------------------------------------------------------------------------------------------------------------------------------------------------------------------------------------------------------	----------------------------------------------------------------------------------------------------------------------------------------------------------------------------------------------------------------------------------------------------------------------------------------------------------

All prices, figures and materials are preliminary and are subject to change without notice E. & O. E. June 8, 2011

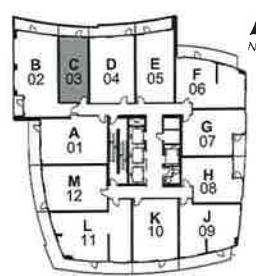
# the cameron<sup>c</sup>

## STUDIO

**SUITE AREA: 421 SQ.FT.**  
**OUTDOOR AREA: 63 SQ.FT.\***  
**TOTAL AREA: 484 SQ.FT.**



FLOOR 7



FLOORS 8-43



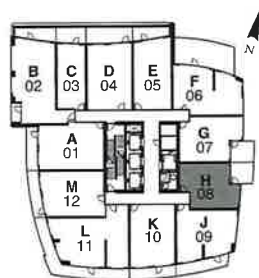
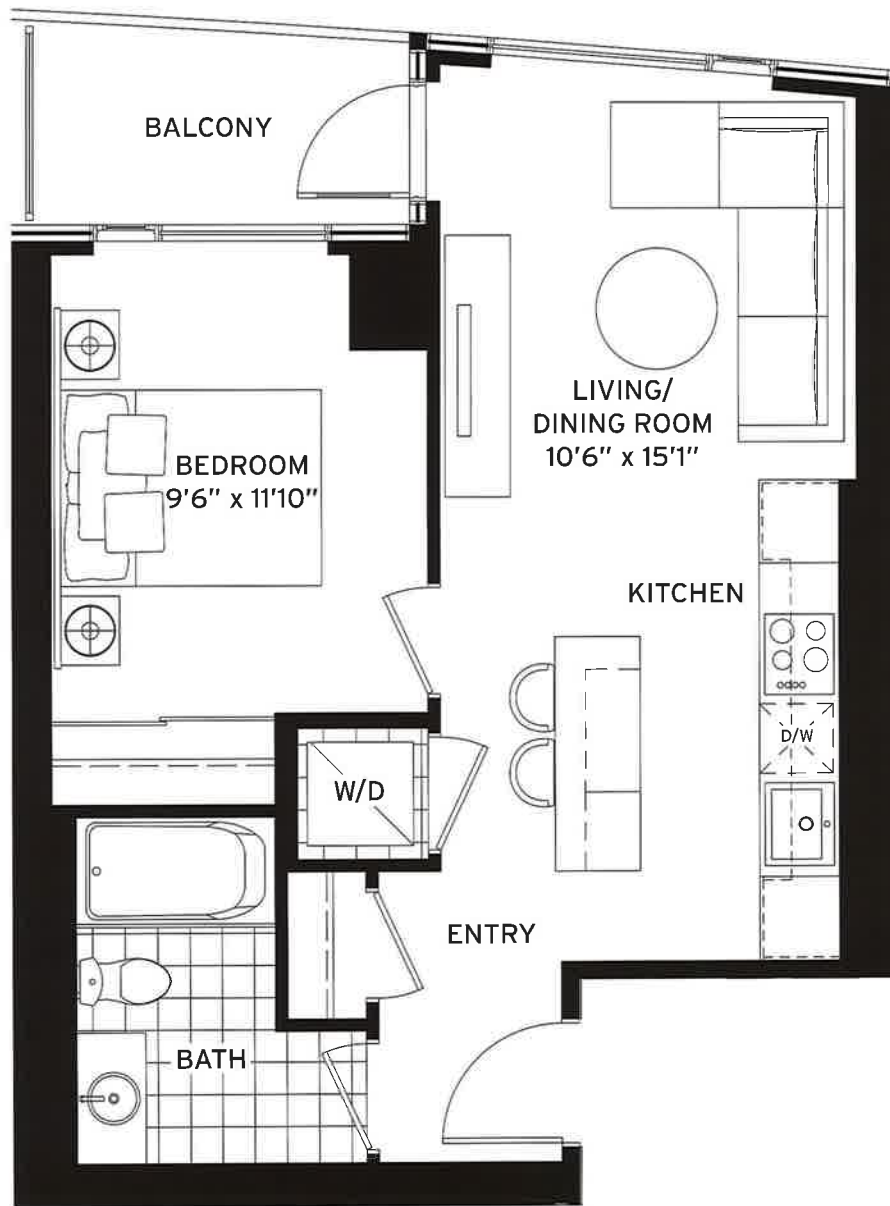
\*Outdoor area may vary per floor. Floorplan layout is subject to floor availability. See Sales Representative for full details. All areas and stated room dimensions are approximate. Floor area measured in accordance with Tarion Warranty Corporation bulletin #22. Actual living area will vary from the stated floor area. The purchaser acknowledges that the actual unit purchased may be a reverse layout to the plan shown. Illustration is artist concept. E. & O.E.

**Daniels**  
**love where you live™**  
 Official Developer of TIFF Bell Lightbox™

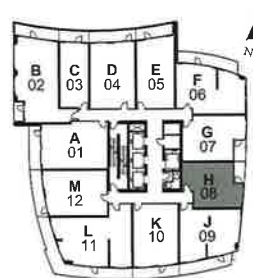
# the hitchcock<sup>H</sup>

ONE BEDROOM

SUITE AREA: 536 SQ.FT.  
 OUTDOOR AREA: 46 SQ.FT.\*  
 TOTAL AREA: 582 SQ.FT.



FLOOR 7



FLOORS 8-43



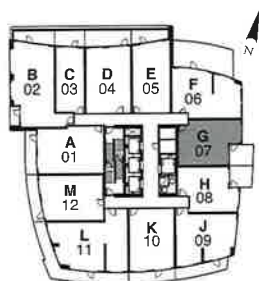
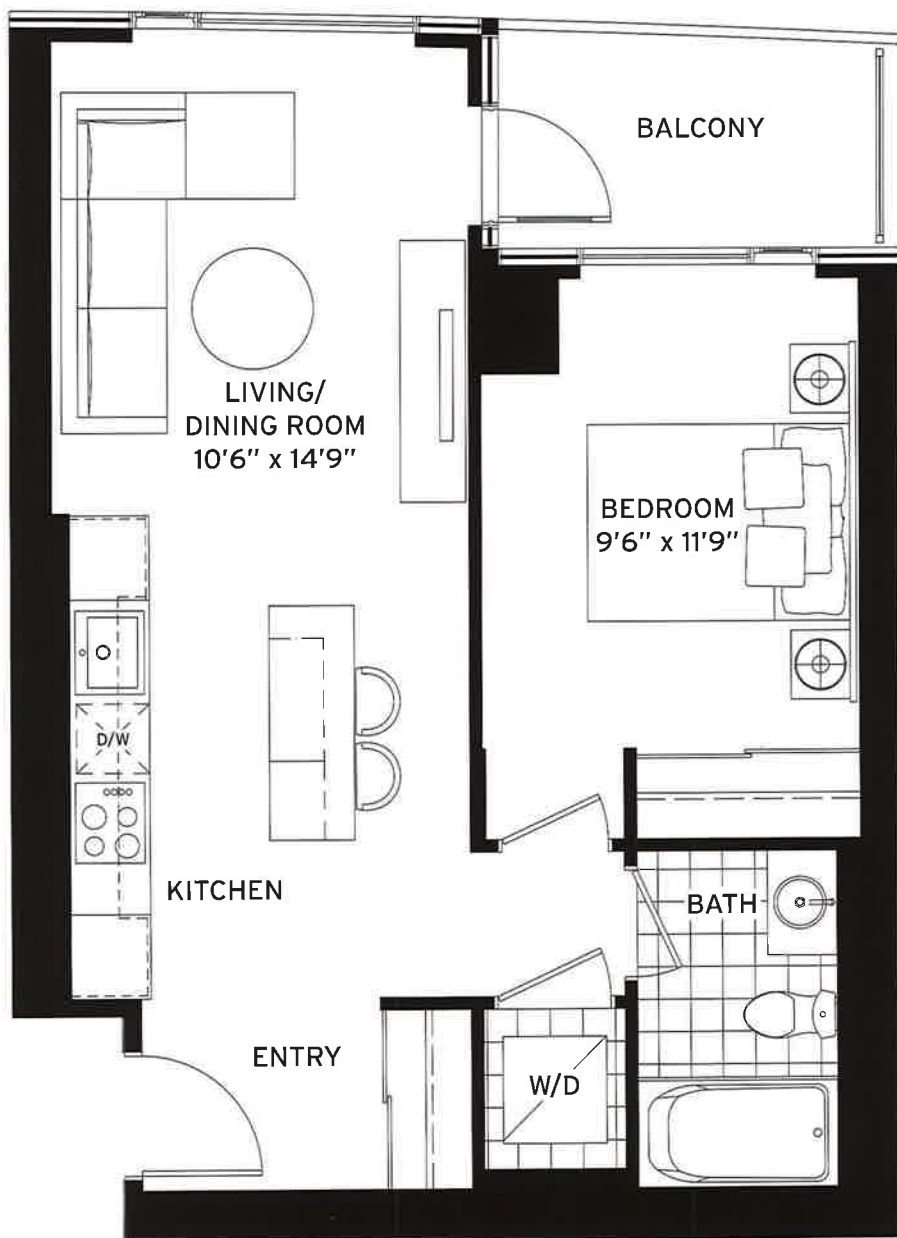
\*Outdoor area may vary per floor. All areas and stated room dimensions are approximate. Floor area measured in accordance with Tarion Warranty Corporation bulletin #22. Actual living area will vary from the stated floor area. The purchaser acknowledges that the actual unit purchased may be a reverse layout to the plan shown. Illustration is artist concept. E. & O.E.

Daniels  
**love where you live™**  
 Official Developer of TIFF Bell Lightbox™

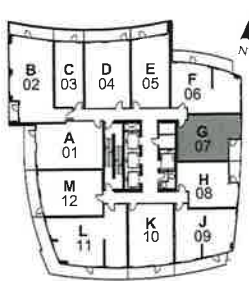
# the scorsese<sup>G</sup>

ONE BEDROOM

SUITE AREA: 585 SQ.FT.  
 OUTDOOR AREA: 51 SQ.FT.\*  
 TOTAL AREA: 636 SQ.FT.



FLOOR 7



FLOORS 8-43



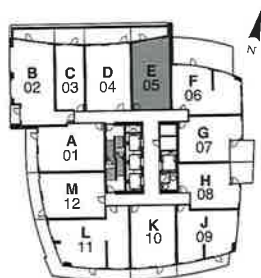
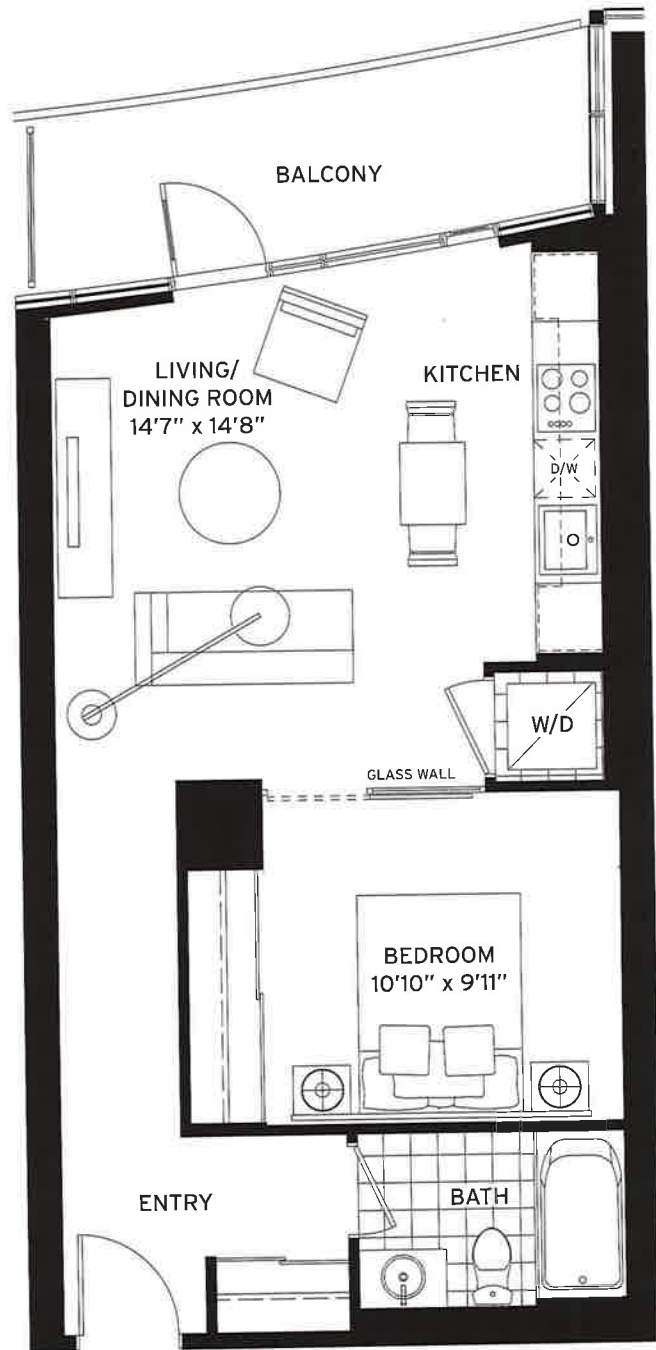
\*Outdoor area may vary per floor. All areas and stated room dimensions are approximate. Floor area measured in accordance with Tarion Warranty Corporation bulletin #22. Actual living area will vary from the stated floor area. The purchaser acknowledges that the actual unit purchased may be a reverse layout to the plan shown. Illustration is artist concept. E. & O. E.

**Daniels**  
**love where you live™**  
 Official Developer of TIFF Bell Lightbox™

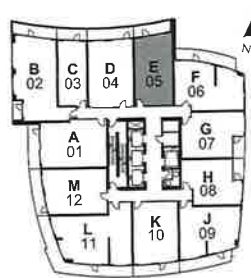
# the welles<sup>E</sup>

ONE BEDROOM

SUITE AREA: 622 SQ.FT.  
 OUTDOOR AREA: 90 SQ.FT.\*  
 TOTAL AREA: 712 SQ.FT.



FLOOR 7



FLOORS 8-43



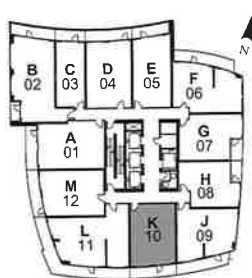
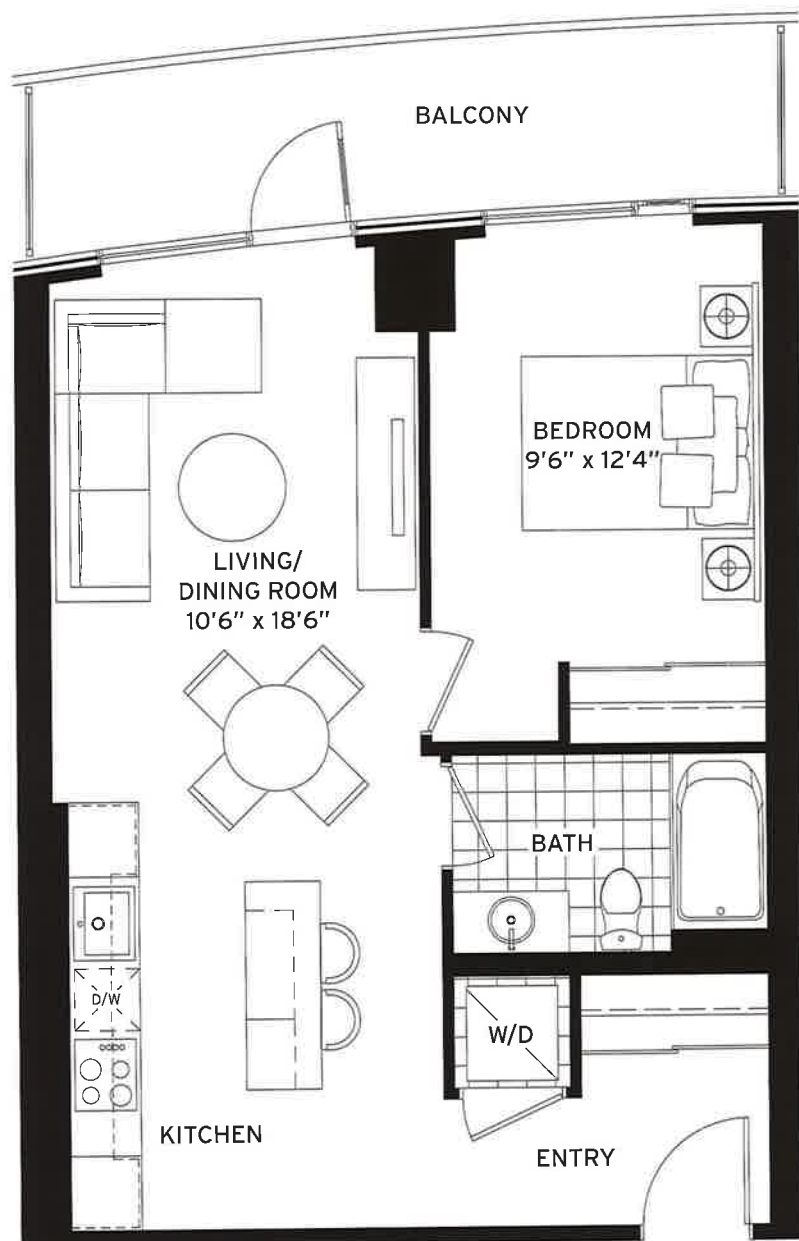
\*Outdoor area may vary per floor. All areas and stated room dimensions are approximate. Floor area measured in accordance with Tarion Warranty Corporation bulletin #22. Actual living area will vary from the stated floor area. The purchaser acknowledges that the actual unit purchased may be a reverse layout to the plan shown. Illustration is artist concept. E. & O.E.

**Daniels**  
**love where you live™**  
 Official Developer of TIFF Bell Lightbox™

# the scott<sup>K</sup>

ONE BEDROOM

SUITE AREA: 617 SQ.FT.  
OUTDOOR AREA: 105 SQ.FT.  
TOTAL AREA: 722 SQ.FT.



FLOORS 7-43



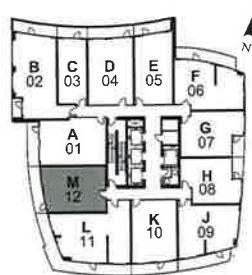
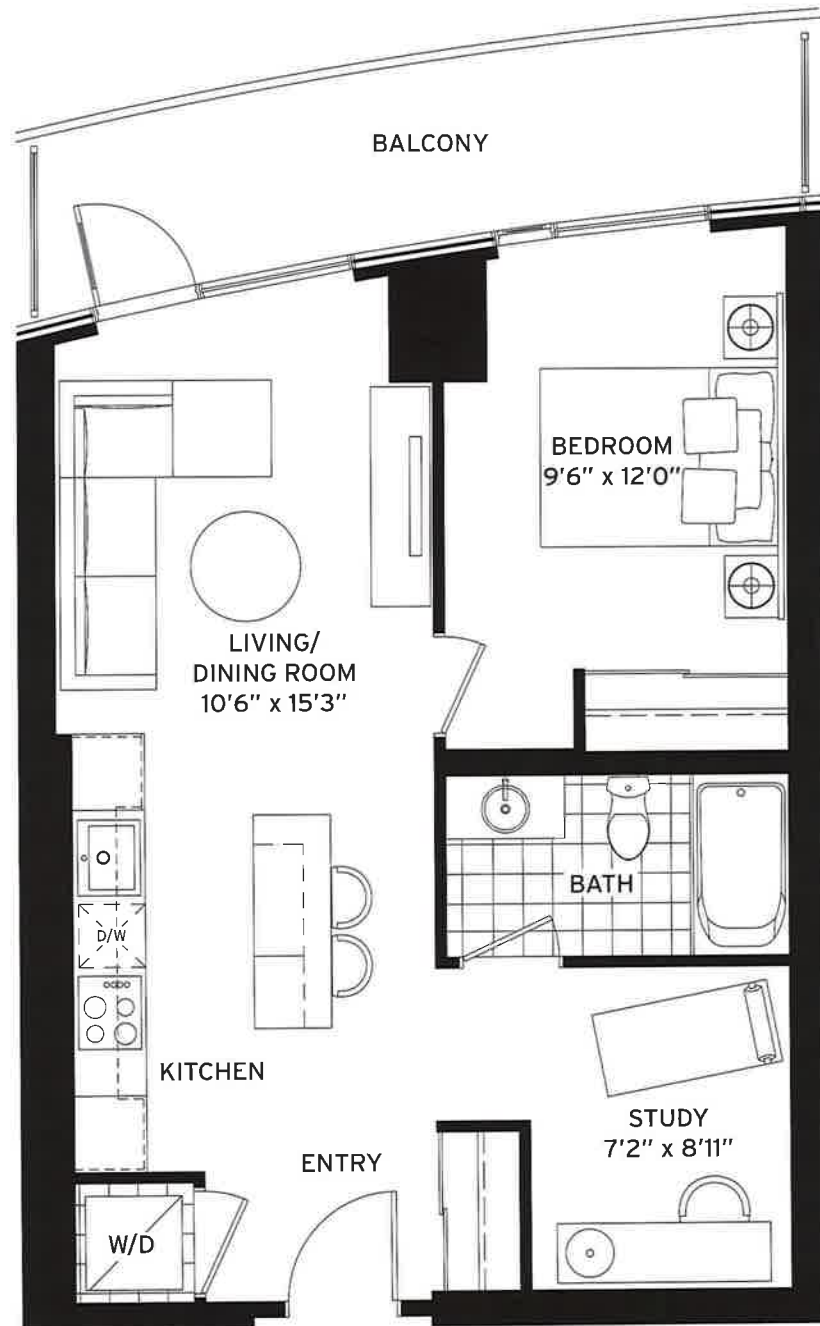
All areas and stated room dimensions are approximate. Floor area measured in accordance with Tarion Warranty Corporation bulletin #22. Actual living area will vary from the stated floor area. The purchaser acknowledges that the actual unit purchased may be a reverse layout to the plan shown. Illustration is artist concept. E. & O.E.

**Daniels**  
**love where you live™**  
Official Developer of TIFF Bell Lightbox™

# the capra<sub>M</sub>

**ONE BEDROOM + STUDY**

**SUITE AREA: 634 SQ.FT.  
OUTDOOR AREA: 106 SQ.FT.  
TOTAL AREA: 740 SQ.FT.**



**FLOORS 7-43**



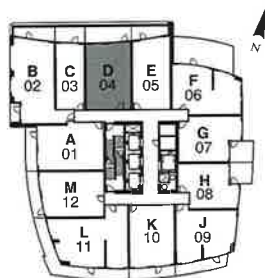
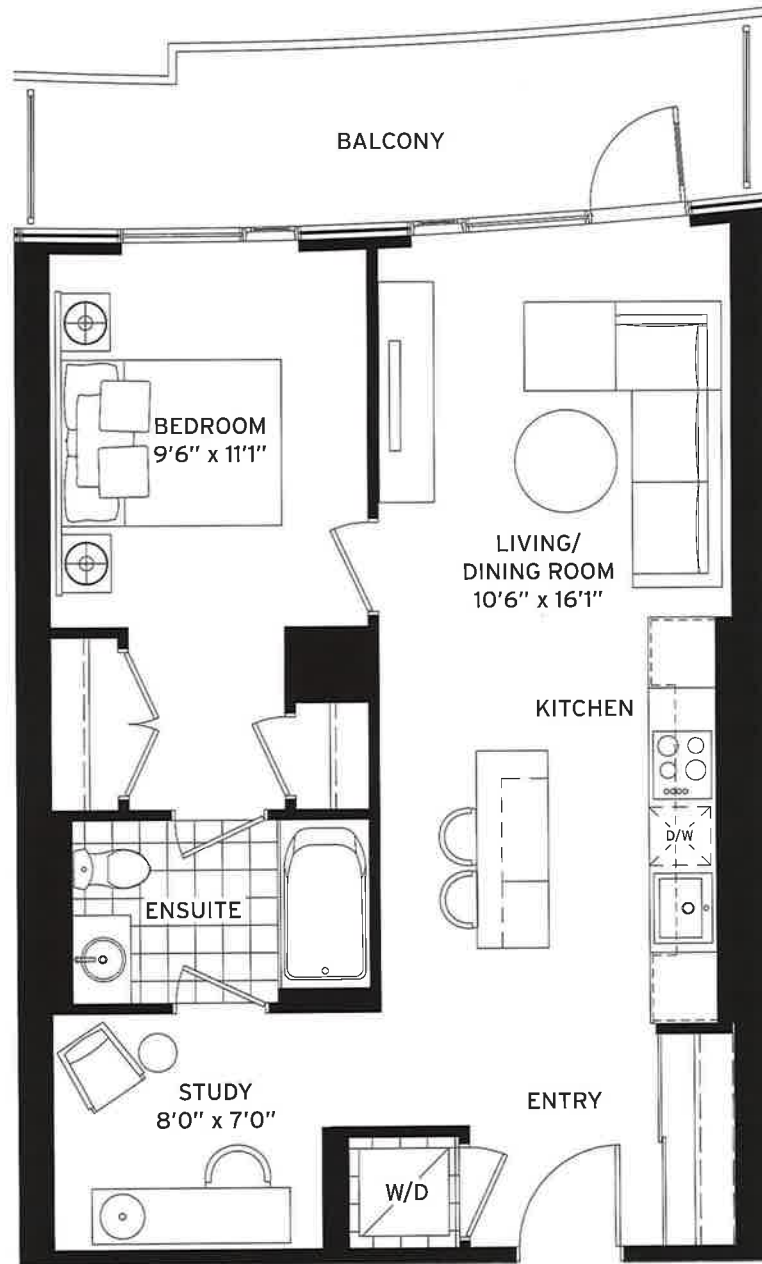
Floorplan layout is subject to floor availability. See Sales Representative for full details. All areas and stated room dimensions are approximate. Floor area measured in accordance with Tarion Warranty Corporation bulletin #22. Actual living area will vary from the stated floor area. The purchaser acknowledges that the actual unit purchased may be a reverse layout to the plan shown. Illustration is artist concept. E. & O.E.

**Daniels**  
**love where you live™**  
Official Developer of TIFF Bell Lightbox™

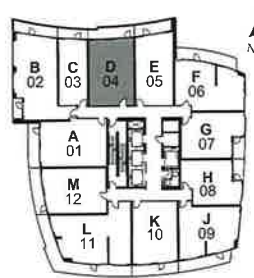
# the allen<sup>D</sup>

ONE BEDROOM + STUDY

SUITE AREA: 661 SQ.FT.  
 OUTDOOR AREA: 108 SQ.FT.\*  
 TOTAL AREA: 769 SQ.FT.



FLOOR 7



FLOORS 8-43



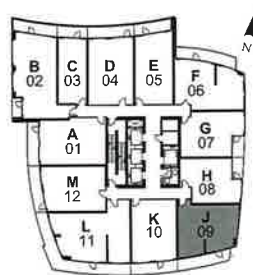
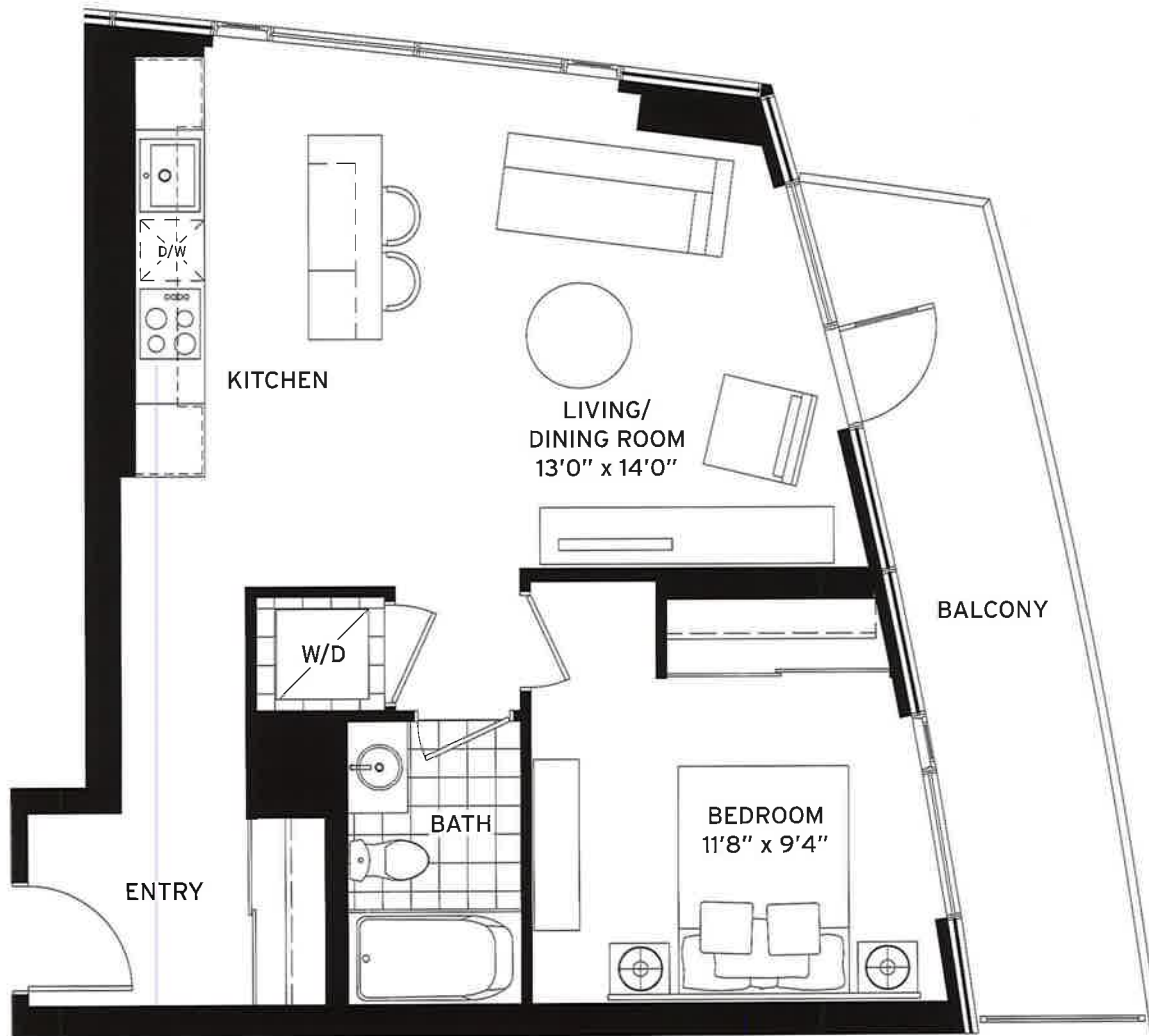
\*Outdoor area may vary per floor. All areas and stated room dimensions are approximate. Floor area measured in accordance with Tarion Warranty Corporation bulletin #22. Actual living area will vary from the stated floor area. The purchaser acknowledges that the actual unit purchased may be a reverse layout to the plan shown. Illustration is artist concept. E. & O.E.

Daniels  
**love where you live™**  
 Official Developer of TIFF Bell Lightbox™

# the coppola

ONE BEDROOM

SUITE AREA: 651 SQ.FT.  
OUTDOOR AREA: 120 SQ.FT.  
TOTAL AREA: 771 SQ.FT.



FLOORS 7-43



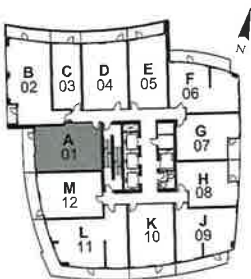
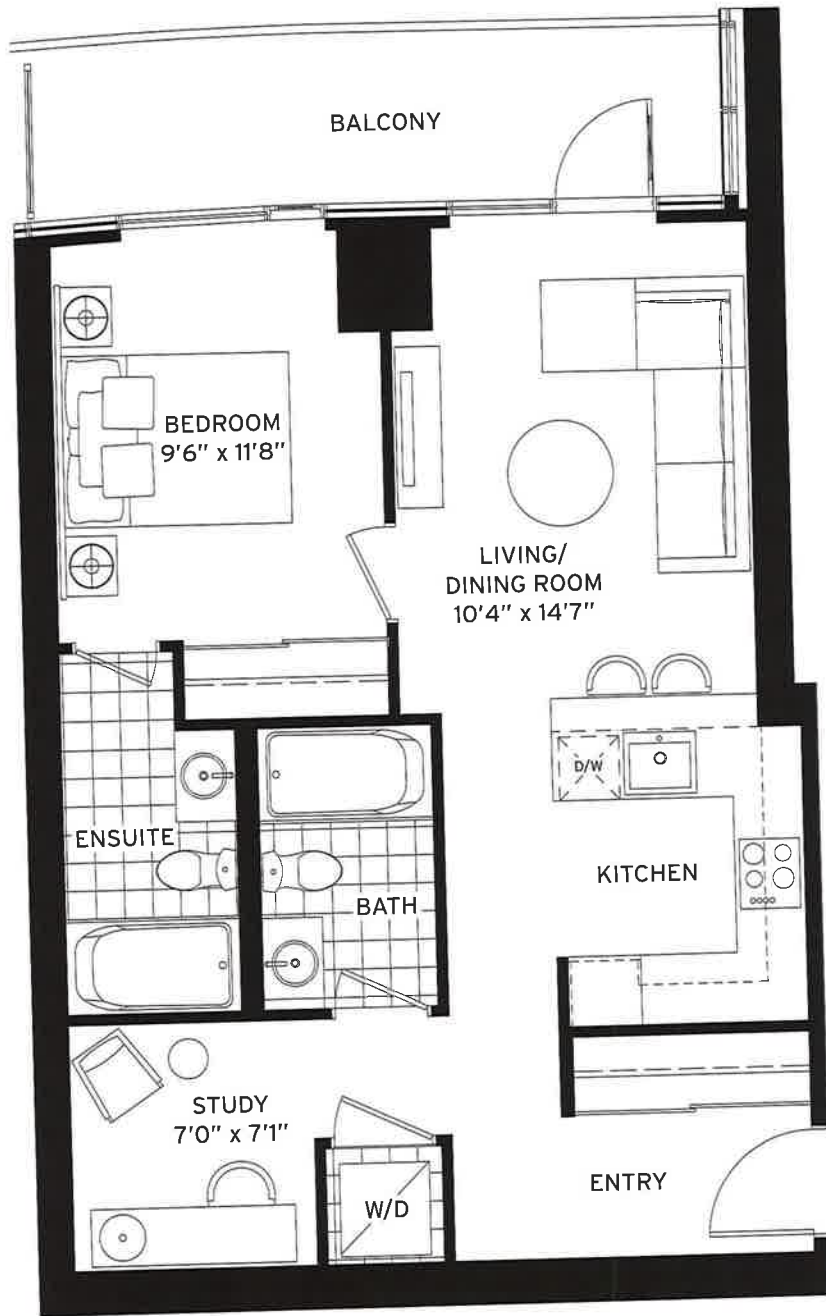
All areas and stated room dimensions are approximate. Floor area measured in accordance with Tarion Warranty Corporation bulletin #22. Actual living area will vary from the stated floor area. The purchaser acknowledges that the actual unit purchased may be a reverse layout to the plan shown. Illustration is artist concept. E. & O.E.

Daniels  
love where you live™  
Official Developer of TIFF Bell Lightbox™

# the Lucas<sup>A</sup>

**ONE BEDROOM + STUDY**

**SUITE AREA: 692 SQ.FT.  
OUTDOOR AREA: 99 SQ.FT.  
TOTAL AREA: 791 SQ.FT.**



FLOORS 7-43



Exclusive Condominium Partner  
of TIFF Bell Lightbox™

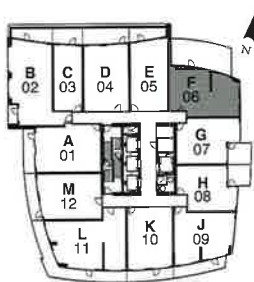
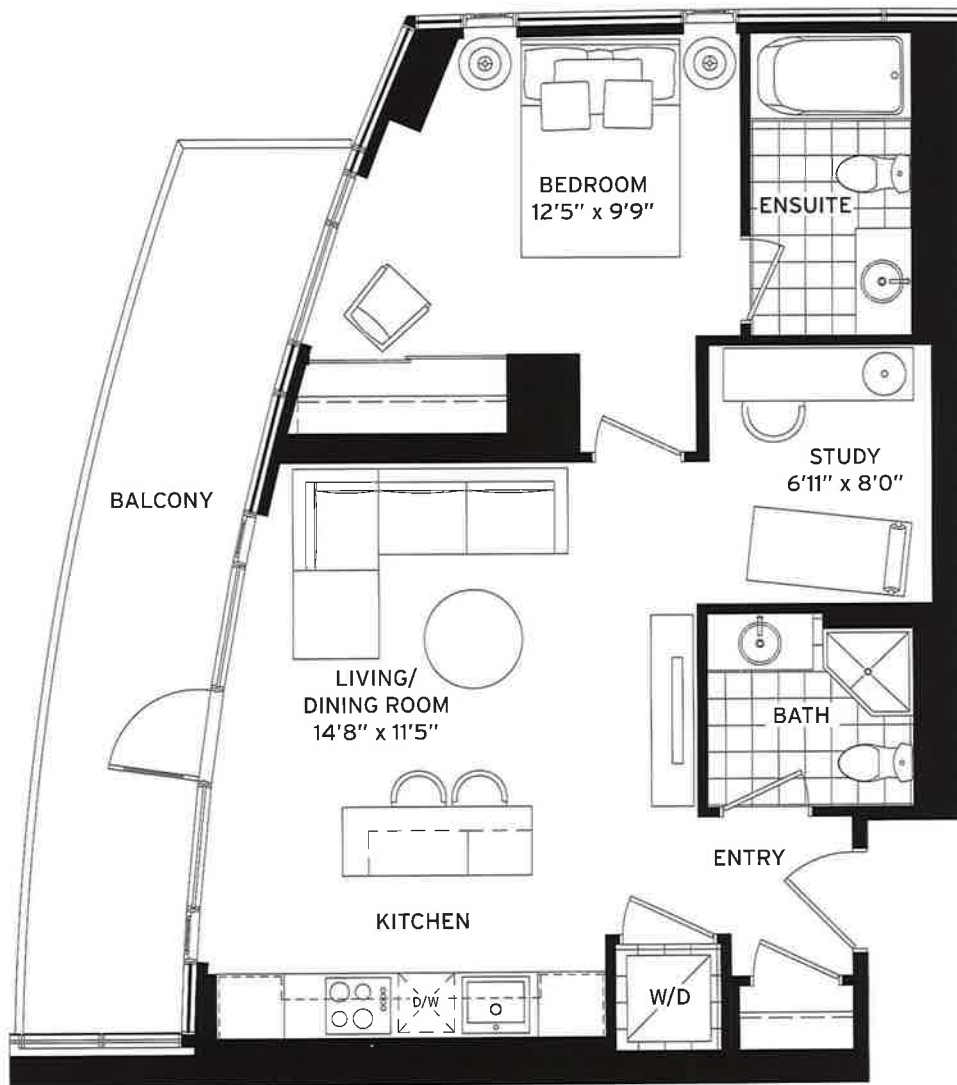
All areas and stated room dimensions are approximate. Floor area measured in accordance with Tarion Warranty Corporation bulletin #22. Actual living area will vary from the stated floor area. The purchaser acknowledges that the actual unit purchased may be a reverse layout to the plan shown. Illustration is artist concept. E. & O.E.

**Daniels**  
**love where you live™**  
Official Developer of TIFF Bell Lightbox™

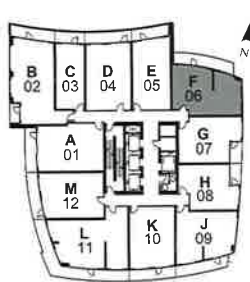
# the spielberg<sup>F</sup>

ONE BEDROOM + STUDY

SUITE AREA: 683 SQ.FT.  
 OUTDOOR AREA: 138 SQ.FT.\*  
 TOTAL AREA: 821 SQ.FT.



FLOOR 7



FLOORS 8-43



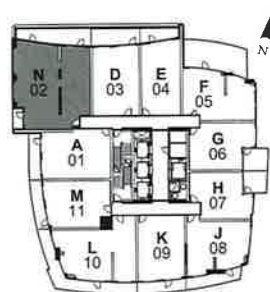
\*Outdoor area may vary per floor. All areas and stated room dimensions are approximate. Floor area measured in accordance with Tarion Warranty Corporation bulletin #22. Actual living area will vary from the stated floor area. The purchaser acknowledges that the actual unit purchased may be a reverse layout to the plan shown. Illustration is artist concept. E & O.E.

**Daniels**  
**love where you live™**  
 Official Developer of TIFF Bell Lightbox™

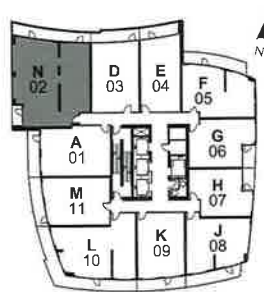
# the bergman<sup>N</sup>

THREE BEDROOM

SUITE AREA: 1,290 SQ.FT.  
 OUTDOOR AREA: 167 SQ.FT.\*  
 TOTAL AREA: 1,457 SQ.FT.



FLOOR 7



FLOORS 8-43



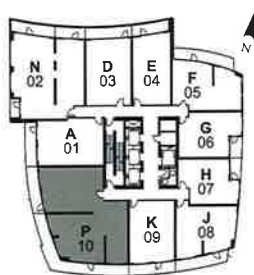
\*Outdoor area may vary per plan. Floorplan layout is subject to floor availability. See Sales Representative for full details. All areas and stated room dimensions are approximate. Floor area measured in accordance with Tarion Warranty Corporation bulletin #22. Actual living area will vary from the stated floor area. The purchaser acknowledges that the actual unit purchased may be a reverse layout to the plan shown. Illustration is artist concept. E. & O.E.

**Daniels**  
**love where you live™**  
 Official Developer of TIFF Bell Lightbox™

# the brooks <sup>P</sup>

**THREE BEDROOM + STUDY**

**SUITE AREA: 1,503 SQ.FT.**  
**OUTDOOR AREA: 415 SQ.FT.**  
**TOTAL AREA: 1,918 SQ.FT.**



**FLOORS 7-43**



Exclusive Condominium Partner  
of TIFF Bell Lightbox™

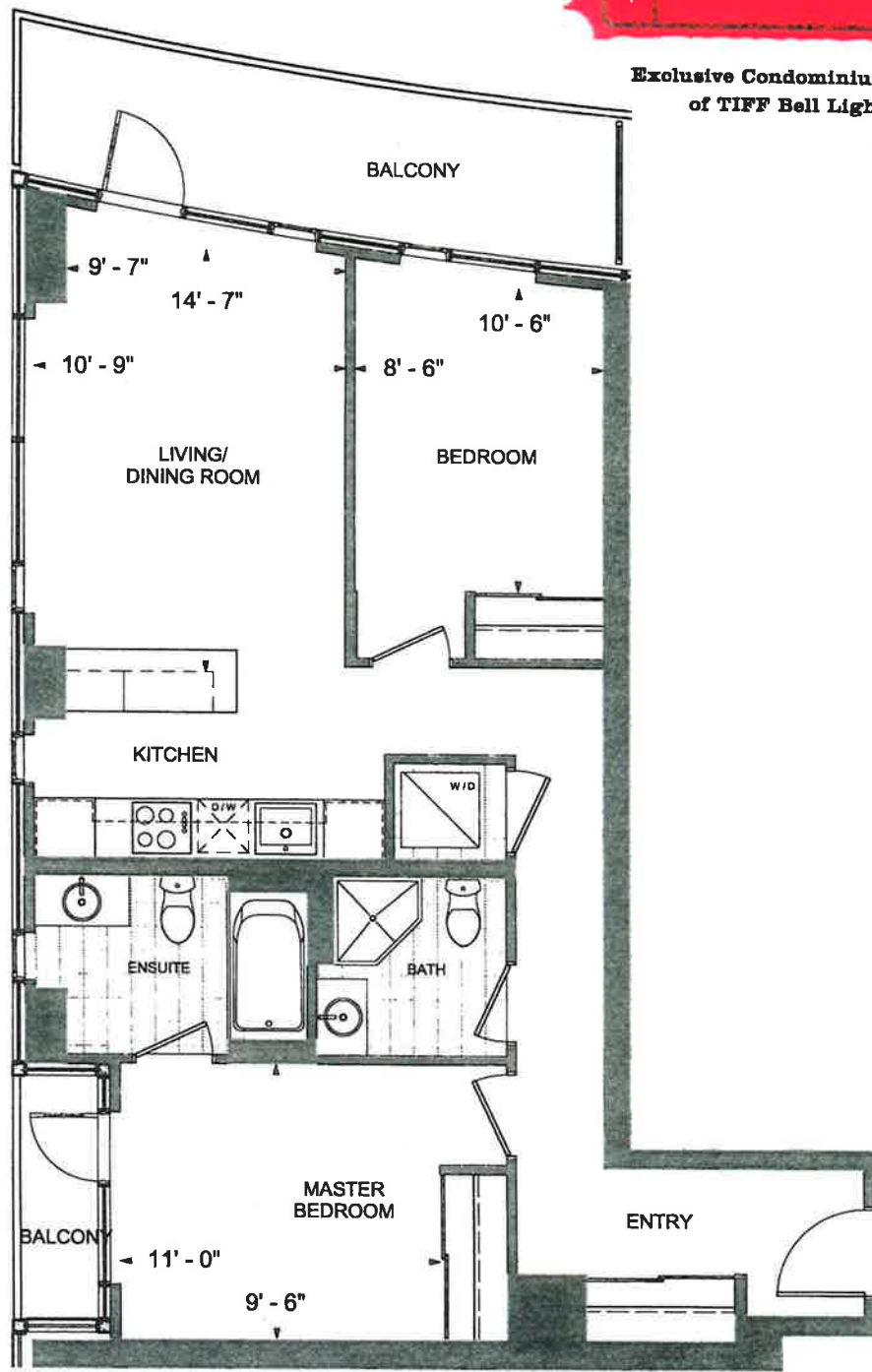
Floorplan layout is subject to floor availability. See Sales Representative for full details. All areas and stated room dimensions are approximate. Floor area measured in accordance with Tarion Warranty Corporation bulletin #22. Actual living area will vary from the stated floor area. The purchaser acknowledges that the actual unit purchased may be a reverse layout to the plan shown. Illustration is artist concept. E. & O.E.

**Daniels**  
**love where you live™**  
 Official Developer of TIFF Bell Lightbox™

# THE NOLAN

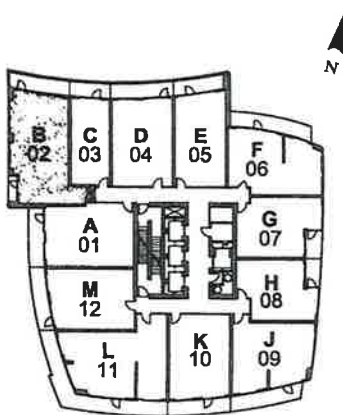


Exclusive Condominium Partner  
of TIFF Bell Lightbox™



## 21 Widmer St

Toronto, Ontario



Level 8-19  
Level 34-43

### UNIT TYPE B

Suite Area: 858 ft<sup>2</sup>  
 Outdoor Area: 132 ft<sup>2</sup>  
 Total Area: 990 ft<sup>2</sup>  
 Date: June 07, 2011

All areas and stated room dimensions are approximate. Floor area measured in accordance with TARION bulletin #???. Actual living areas will vary from floor areas stated. The purchaser acknowledges that the actual unit purchased may be a reversed layout to the plan shown.