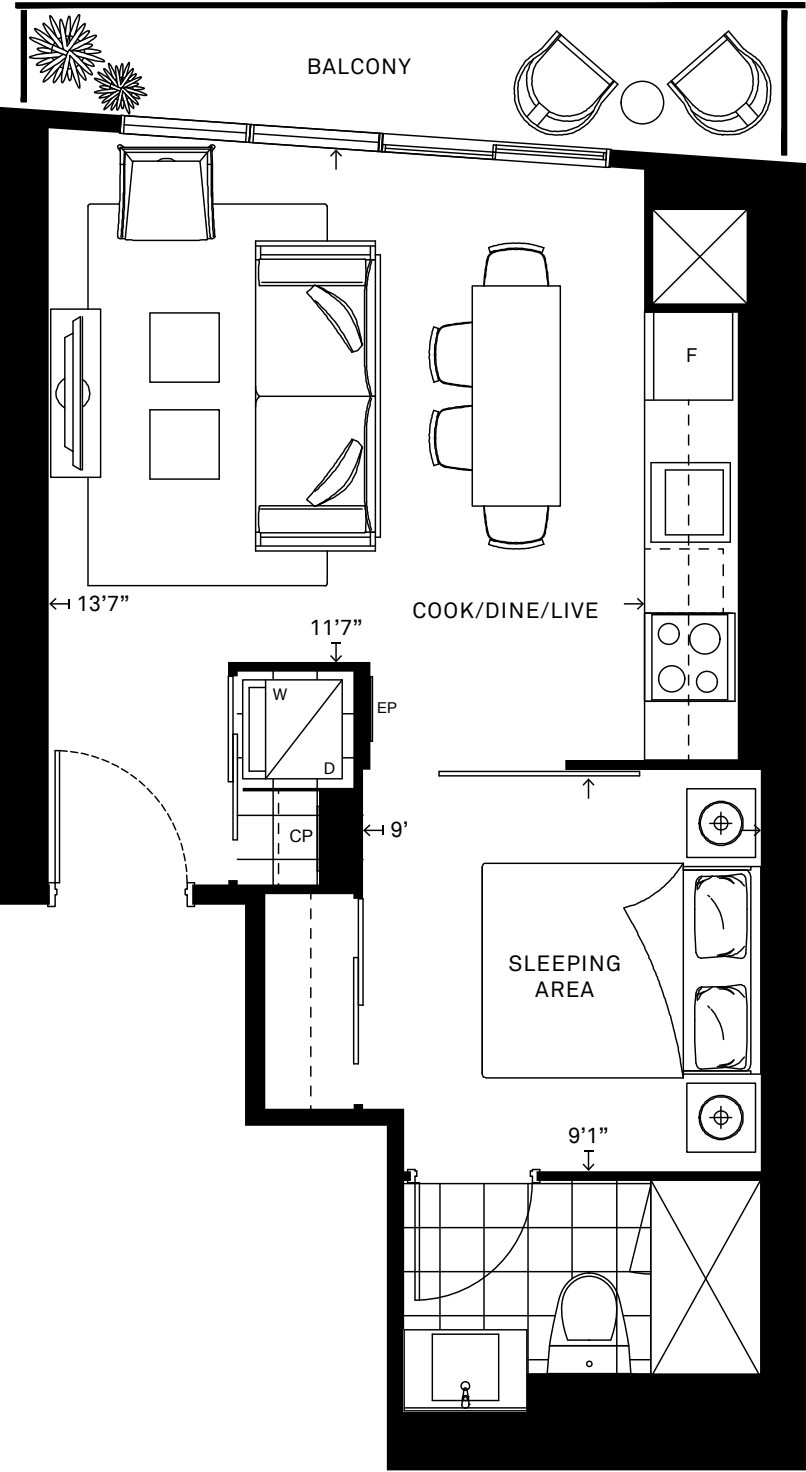


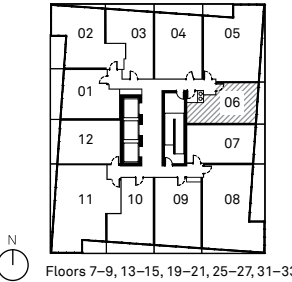
SUITE S1

STUDIO



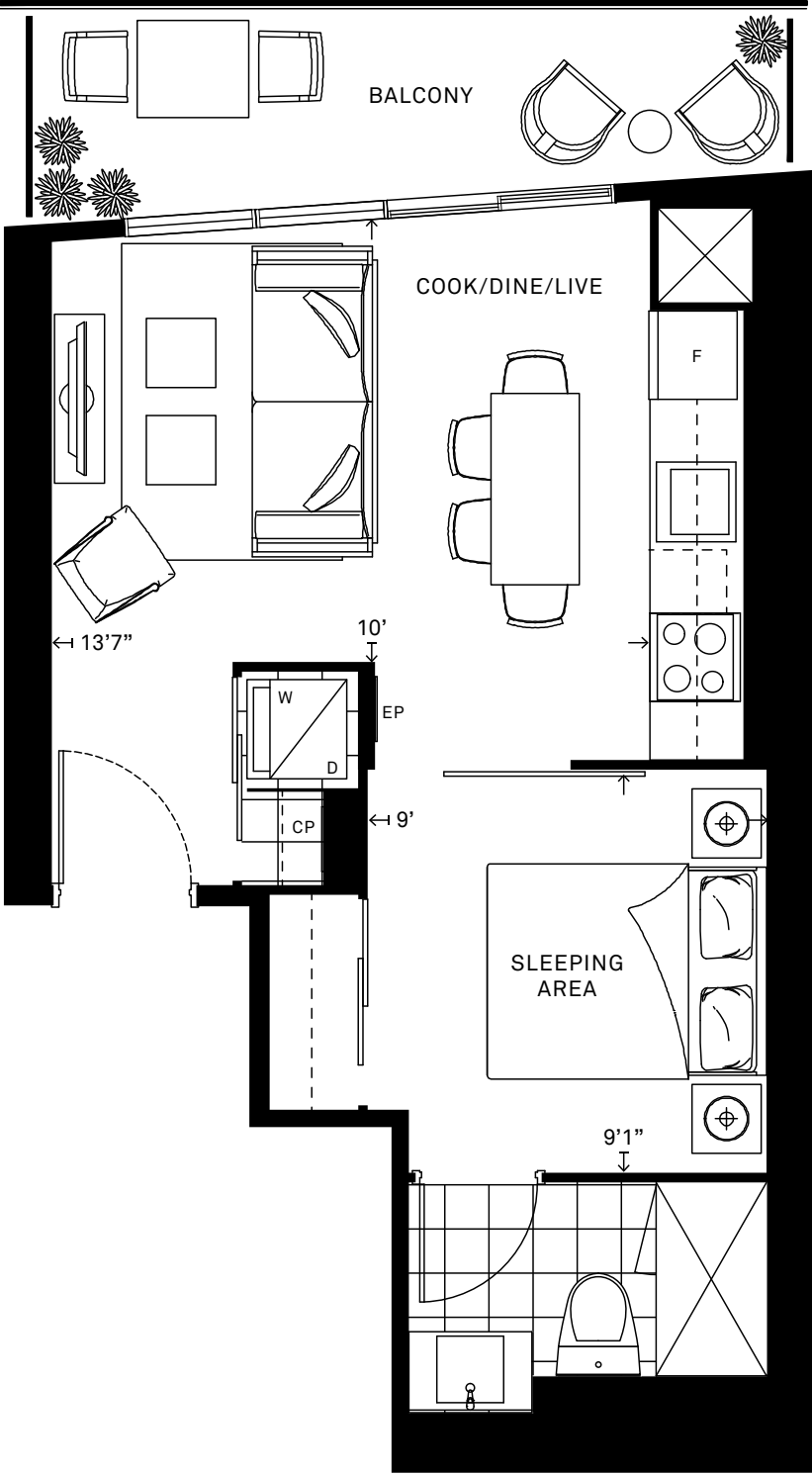
**Kambiz Farsian**  
Sales Representative  
**416.317.4438**

All dimensions are approximate and subject to normal construction variances. Dimensions may exceed the useable floor area. Size and specifications subject to change without notice. Furniture is displayed for illustration purposes only and does not necessarily reflect the electrical plan for the suite. Suites are sold unfurnished. E.&O.E. May 2014.

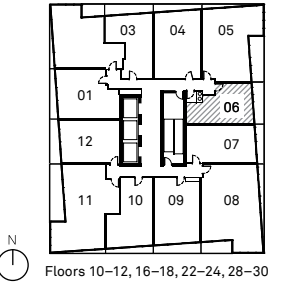


SUITE S1a

STUDIO

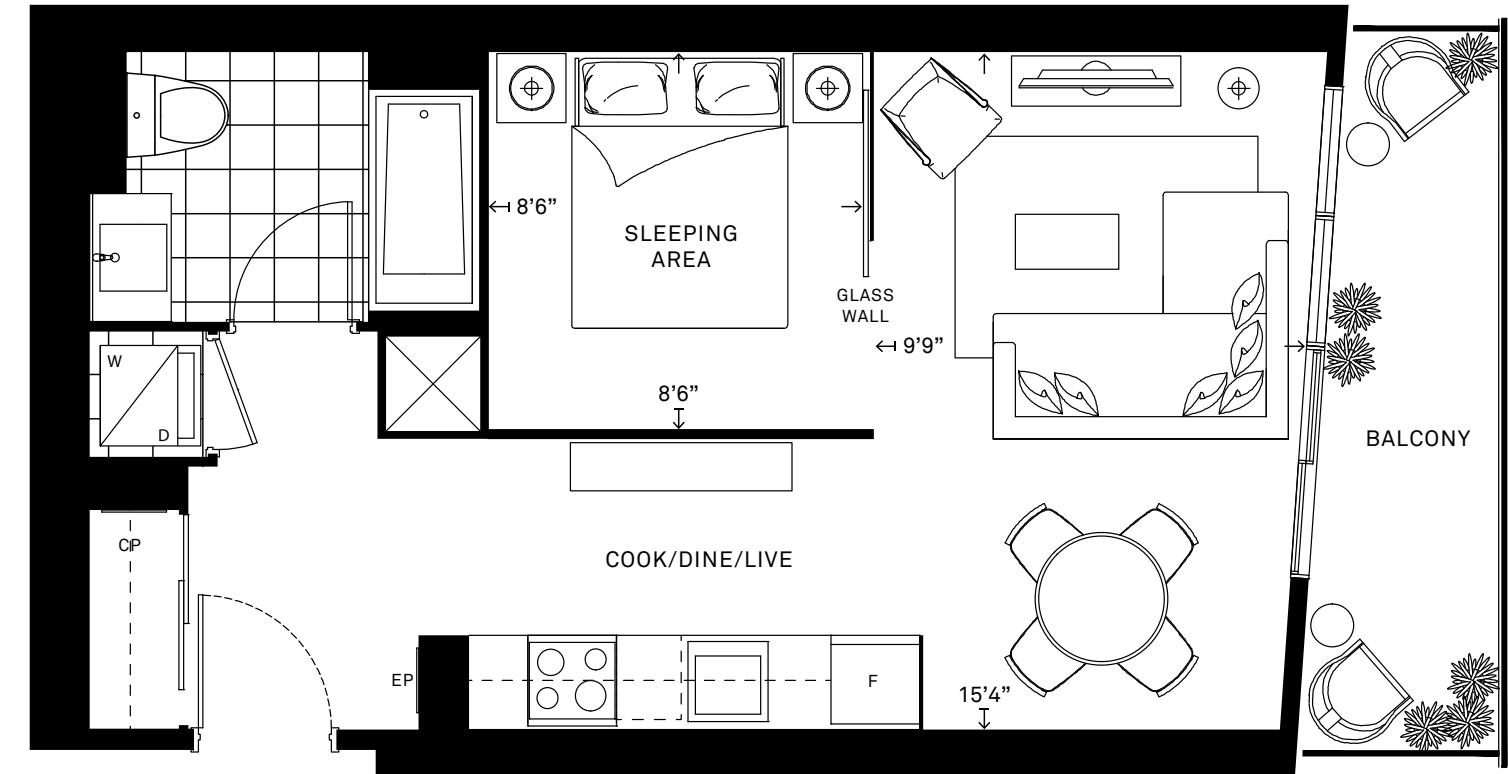


All dimensions are approximate and subject to normal construction variances. Dimensions may exceed the useable floor area. Size and specifications subject to change without notice. Furniture is displayed for illustration purposes only and does not necessarily reflect the electrical plan for the suite. Suites are sold unfurnished. E.&O.E. May 2014.



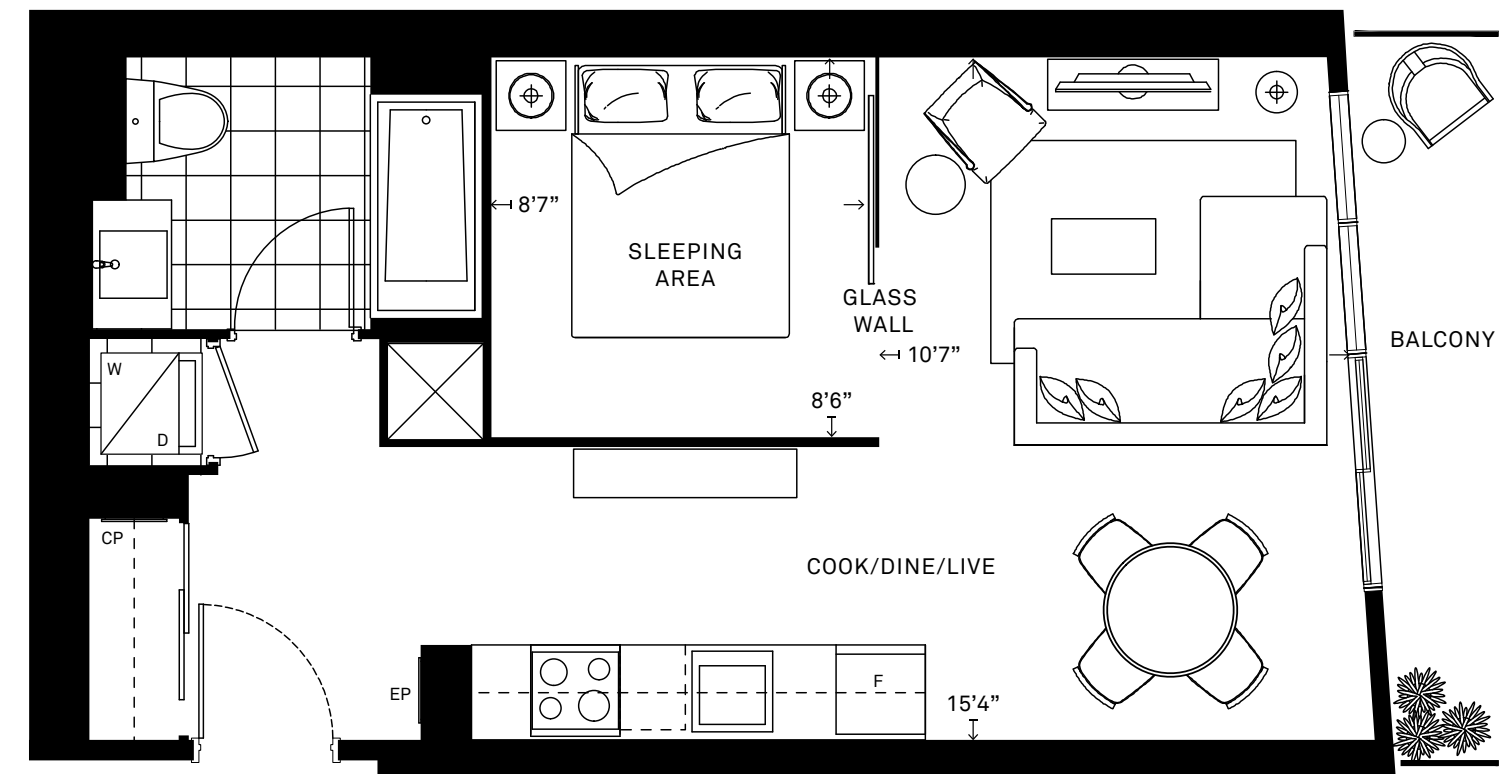
SUITE S2

STUDIO



SUITE S2a

STUDIO

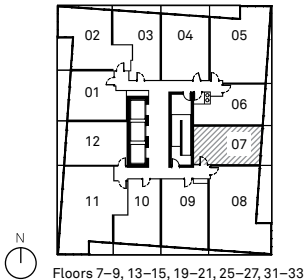


**Kambiz Farsian**

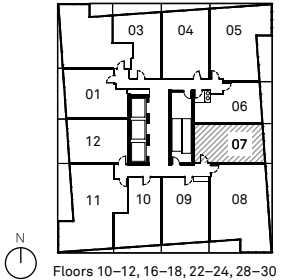
Sales Representative

**416.317.4438**

All dimensions are approximate and subject to normal construction variances. Dimensions may exceed the useable floor area. Size and specifications subject to change without notice. Furniture is displayed for illustration purposes only and does not necessarily reflect the electrical plan for the suite. Suites are sold unfurnished. E.&O.E. May 2014.

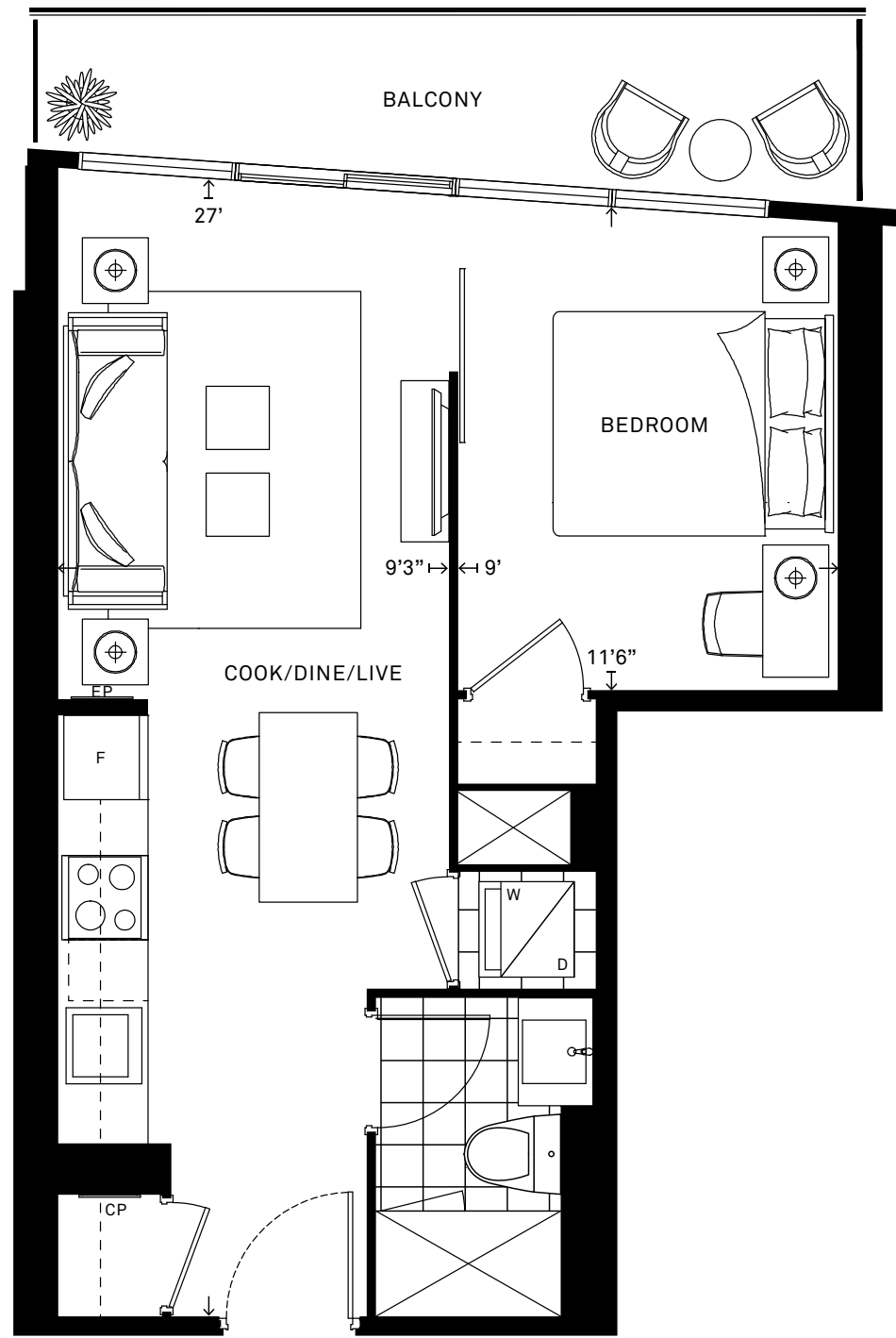


All dimensions are approximate and subject to normal construction variances. Dimensions may exceed the useable floor area. Size and specifications subject to change without notice. Furniture is displayed for illustration purposes only and does not necessarily reflect the electrical plan for the suite. Suites are sold unfurnished. E.&O.E. May 2014.

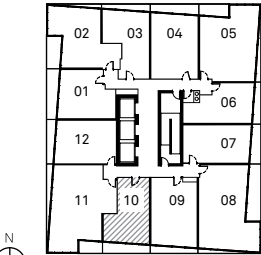


SUITE 1A

ONE BEDROOM



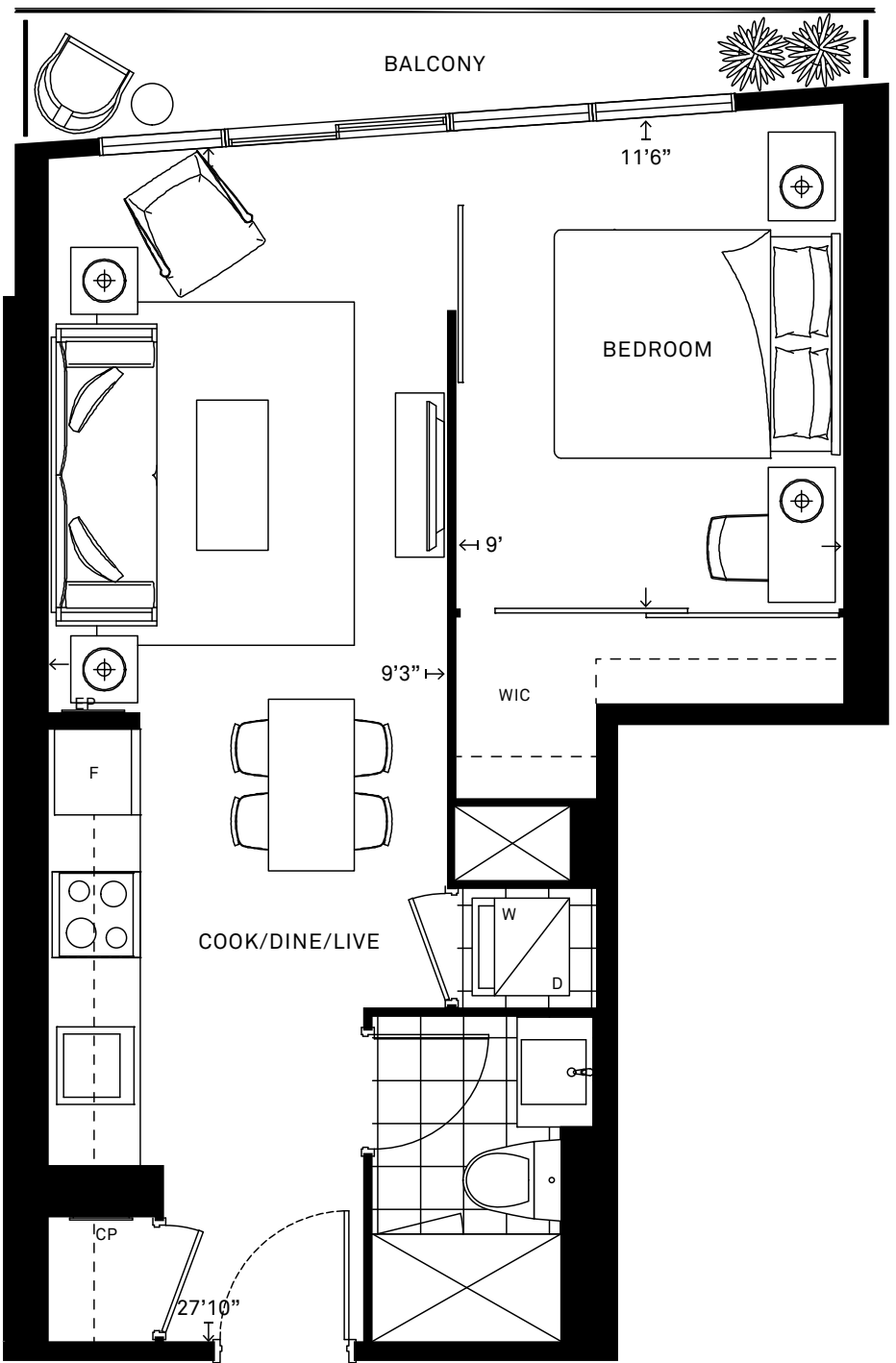
All dimensions are approximate and subject to normal construction variances. Dimensions may exceed the useable floor area. Size and specifications subject to change without notice. Furniture is displayed for illustration purposes only and does not necessarily reflect the electrical plan for the suite. Suites are sold unfurnished. E. & O. E. May 2014.



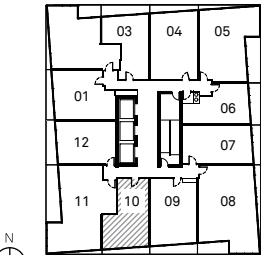
Floors 7-9, 13-15, 19-21, 25-27, 31-33

SUITE 1Aa

ONE BEDROOM



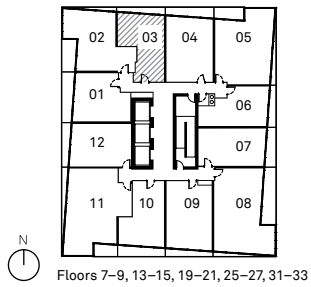
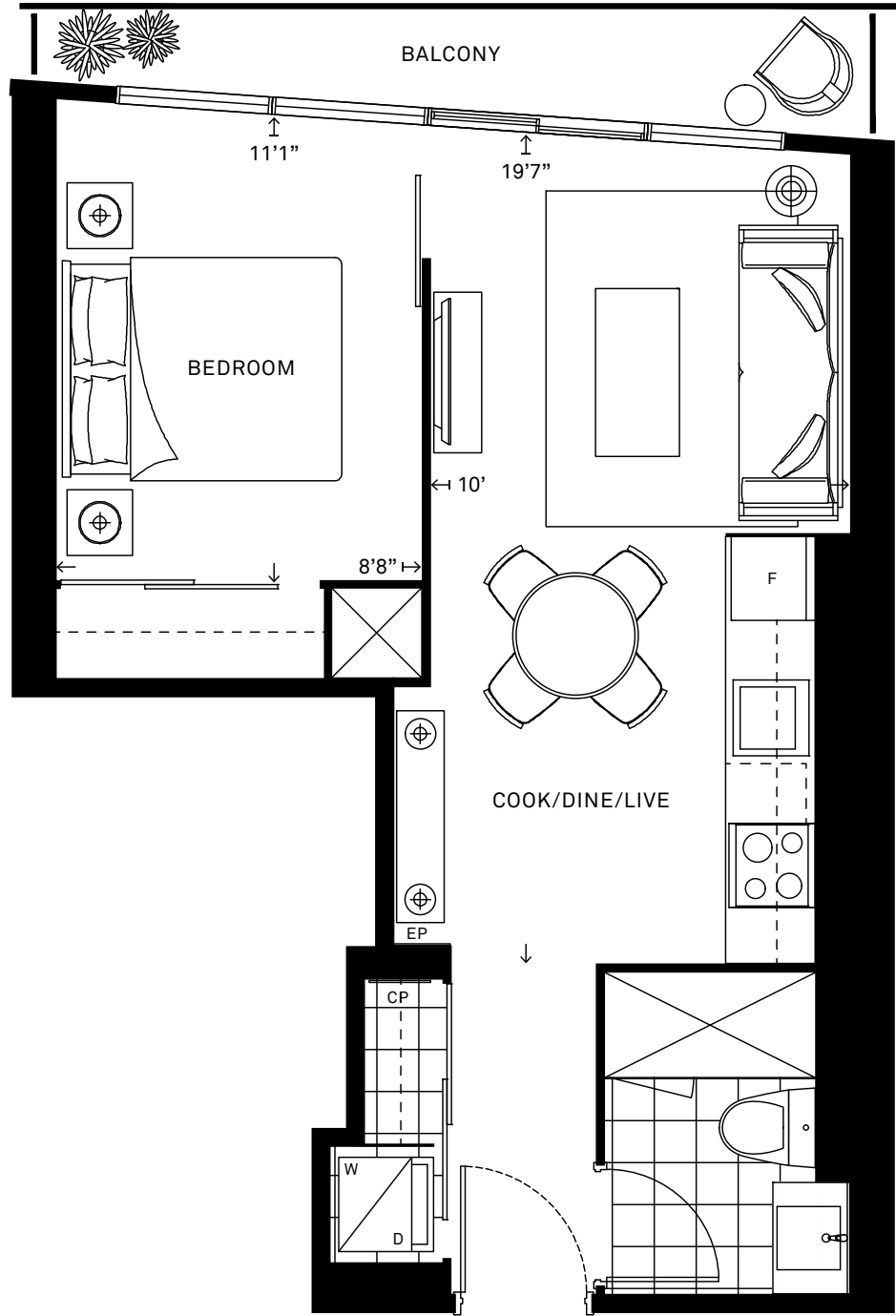
All dimensions are approximate and subject to normal construction variances. Dimensions may exceed the useable floor area. Size and specifications subject to change without notice. Furniture is displayed for illustration purposes only and does not necessarily reflect the electrical plan for the suite. Suites are sold unfurnished. E. & O. E. May 2014.



Floors 10-12, 16-18, 22-24, 28-30

SUITE 1B

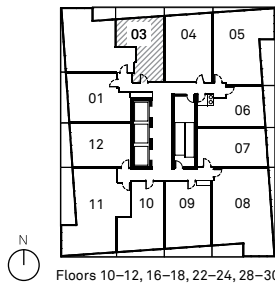
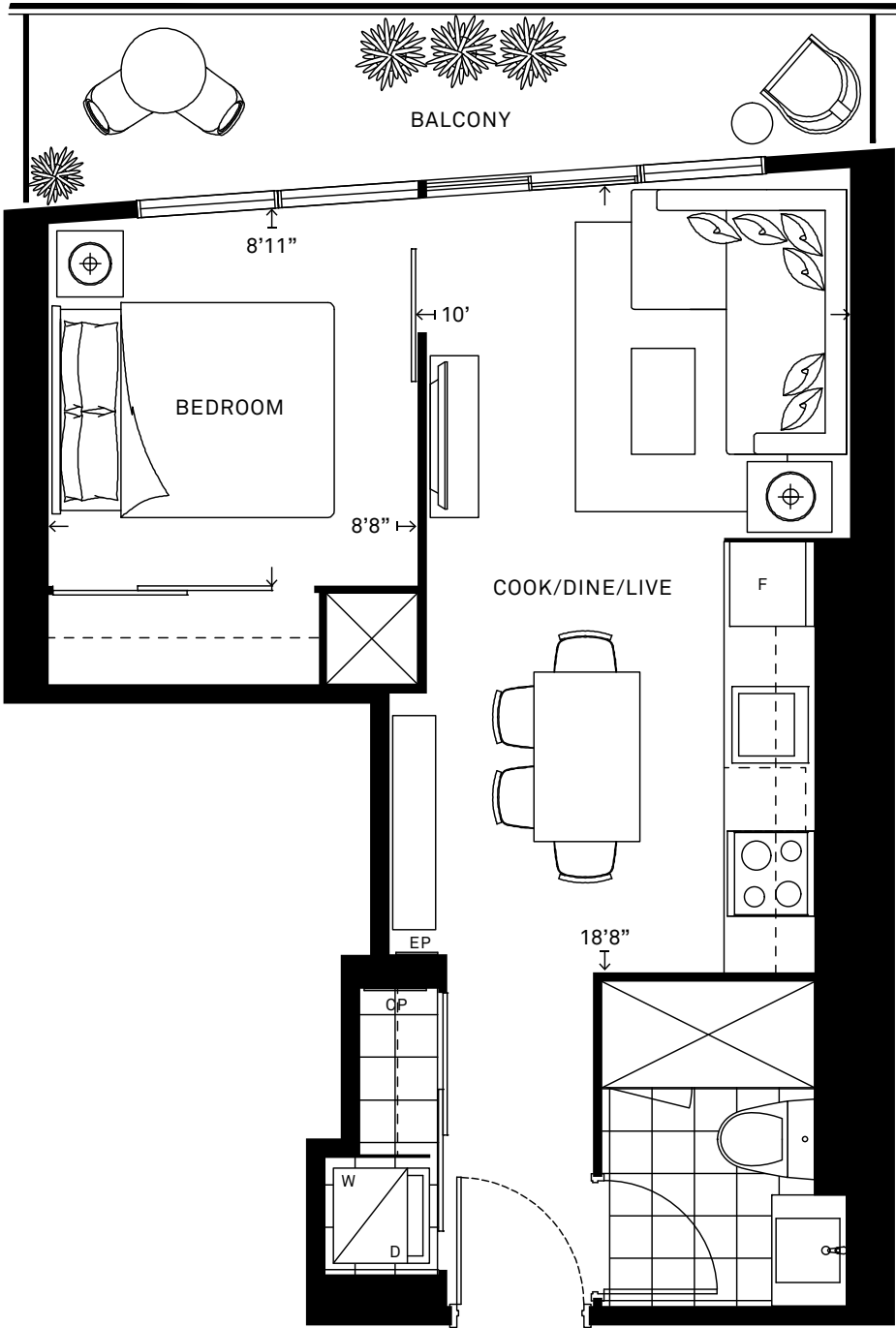
ONE BEDROOM



All dimensions are approximate and subject to normal construction variances. Dimensions may exceed the useable floor area. Size and specifications subject to change without notice. Furniture is displayed for illustration purposes only and does not necessarily reflect the electrical plan for the suite. Suites are sold unfurnished. E. & O. E. May 2014.

SUITE 1Ba

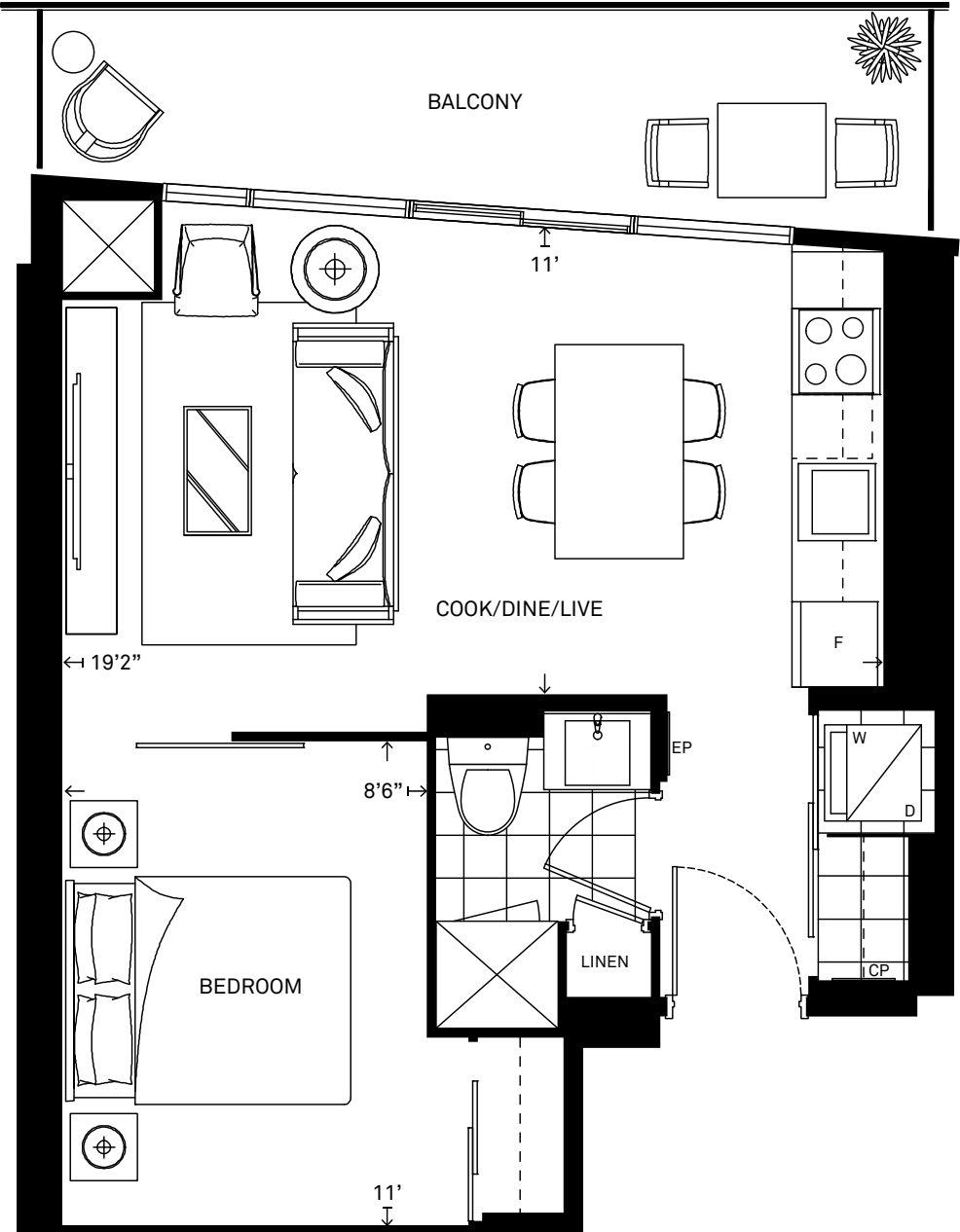
ONE BEDROOM



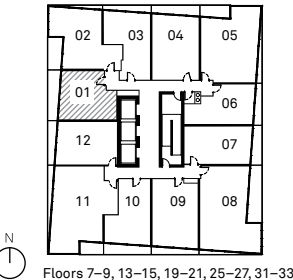
All dimensions are approximate and subject to normal construction variances. Dimensions may exceed the useable floor area. Size and specifications subject to change without notice. Furniture is displayed for illustration purposes only and does not necessarily reflect the electrical plan for the suite. Suites are sold unfurnished. E. & O. E. May 2014.

SUITE 1C

ONE BEDROOM

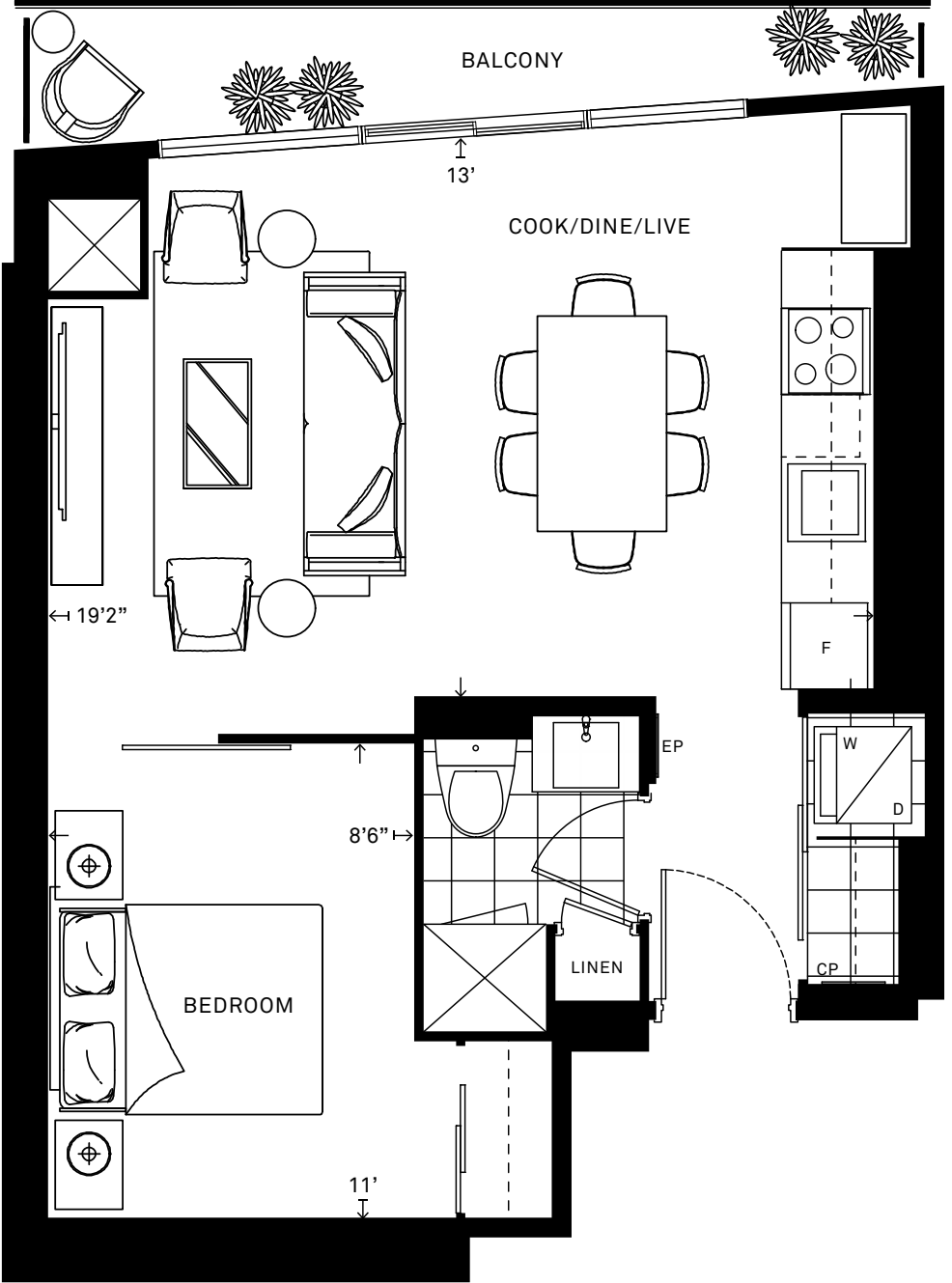


All dimensions are approximate and subject to normal construction variances. Dimensions may exceed the useable floor area. Size and specifications subject to change without notice. Furniture is displayed for illustration purposes only and does not necessarily reflect the electrical plan for the suite. Suites are sold unfurnished. E. & O. E. May 2014.

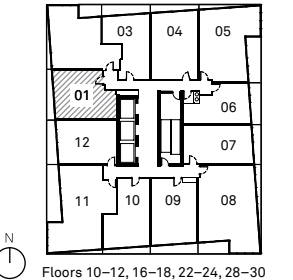


SUITE 1Ca

ONE BEDROOM

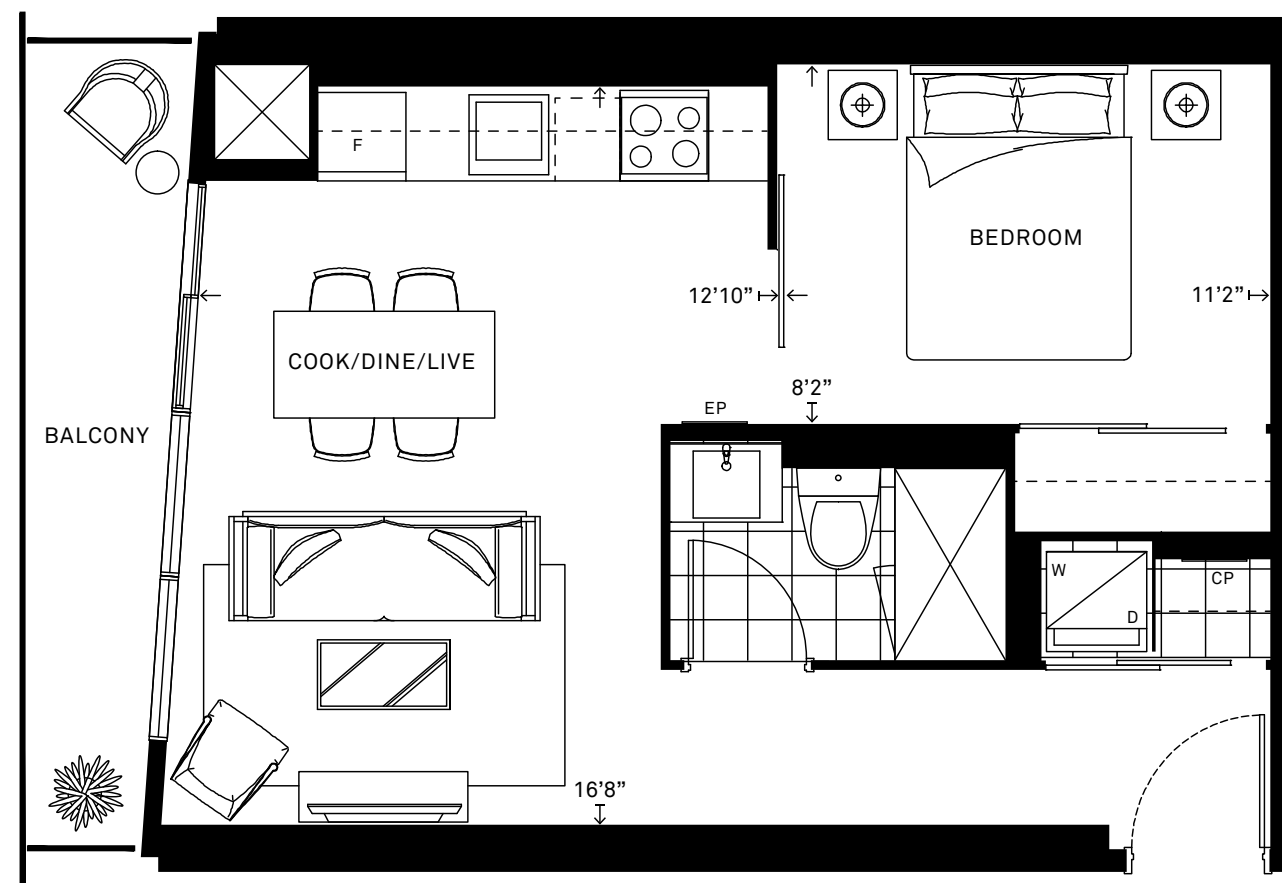


All dimensions are approximate and subject to normal construction variances. Dimensions may exceed the useable floor area. Size and specifications subject to change without notice. Furniture is displayed for illustration purposes only and does not necessarily reflect the electrical plan for the suite. Suites are sold unfurnished. E. & O. E. May 2014.



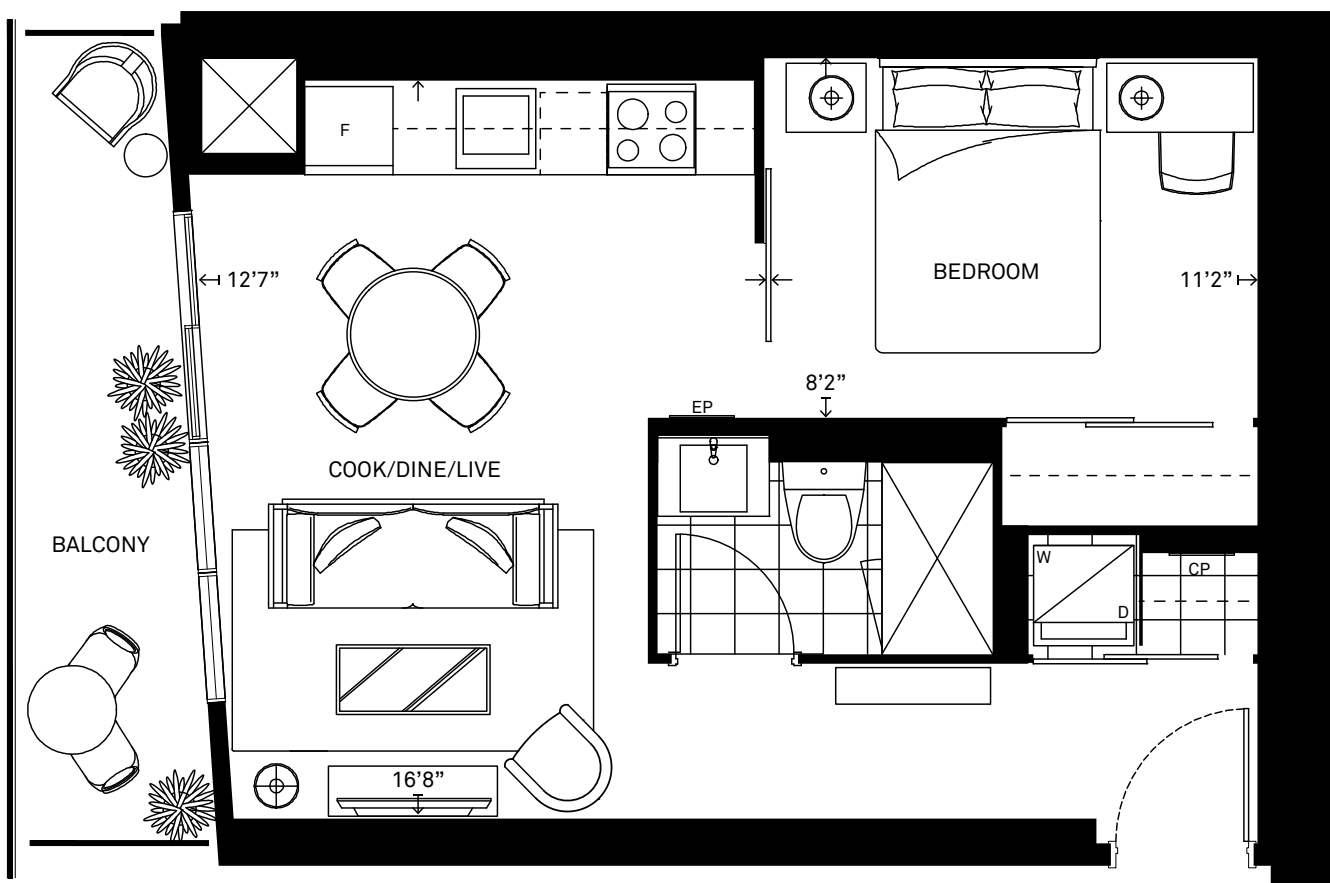
SUITE 1D

ONE BEDROOM



SUITE 1Da

ONE BEDROOM

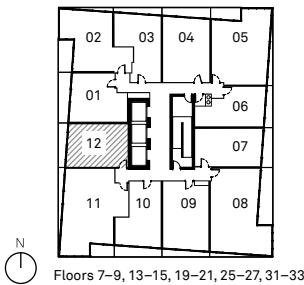


**Kambiz Farsian**

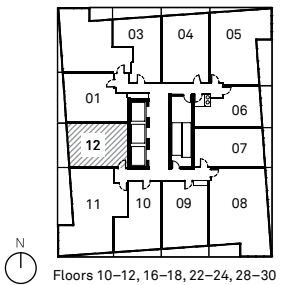
Sales Representative

**416.317.4438**

All dimensions are approximate and subject to normal construction variances. Dimensions may exceed the useable floor area. Size and specifications subject to change without notice. Furniture is displayed for illustration purposes only and does not necessarily reflect the electrical plan for the suite. Suites are sold unfurnished. E. & O.E. May 2014.

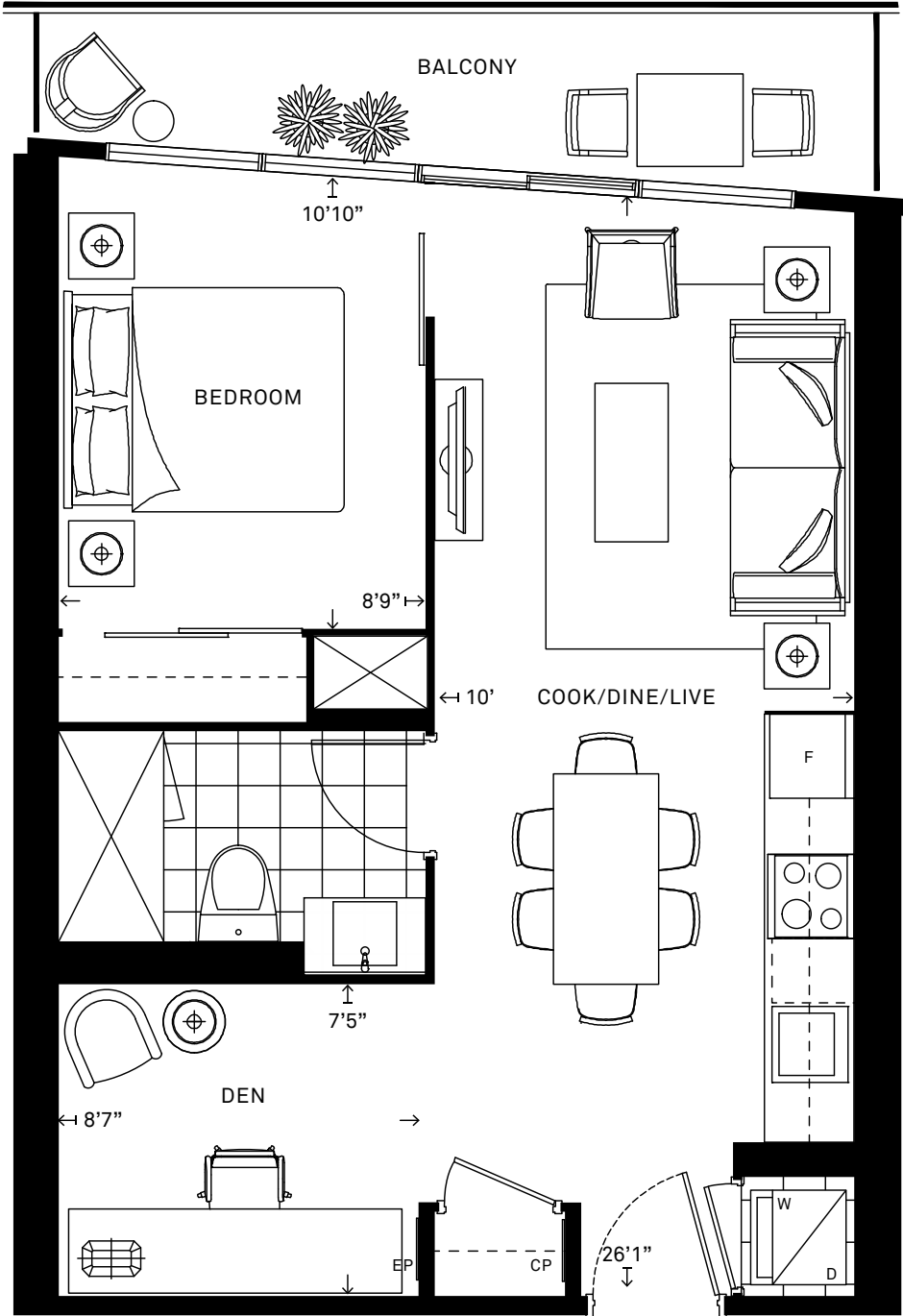


All dimensions are approximate and subject to normal construction variances. Dimensions may exceed the useable floor area. Size and specifications subject to change without notice. Furniture is displayed for illustration purposes only and does not necessarily reflect the electrical plan for the suite. Suites are sold unfurnished. E. & O.E. May 2014.

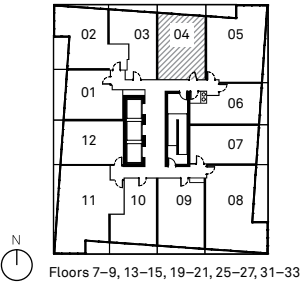


SUITE 1E + D

ONE BEDROOM + DEN



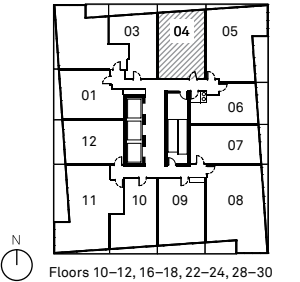
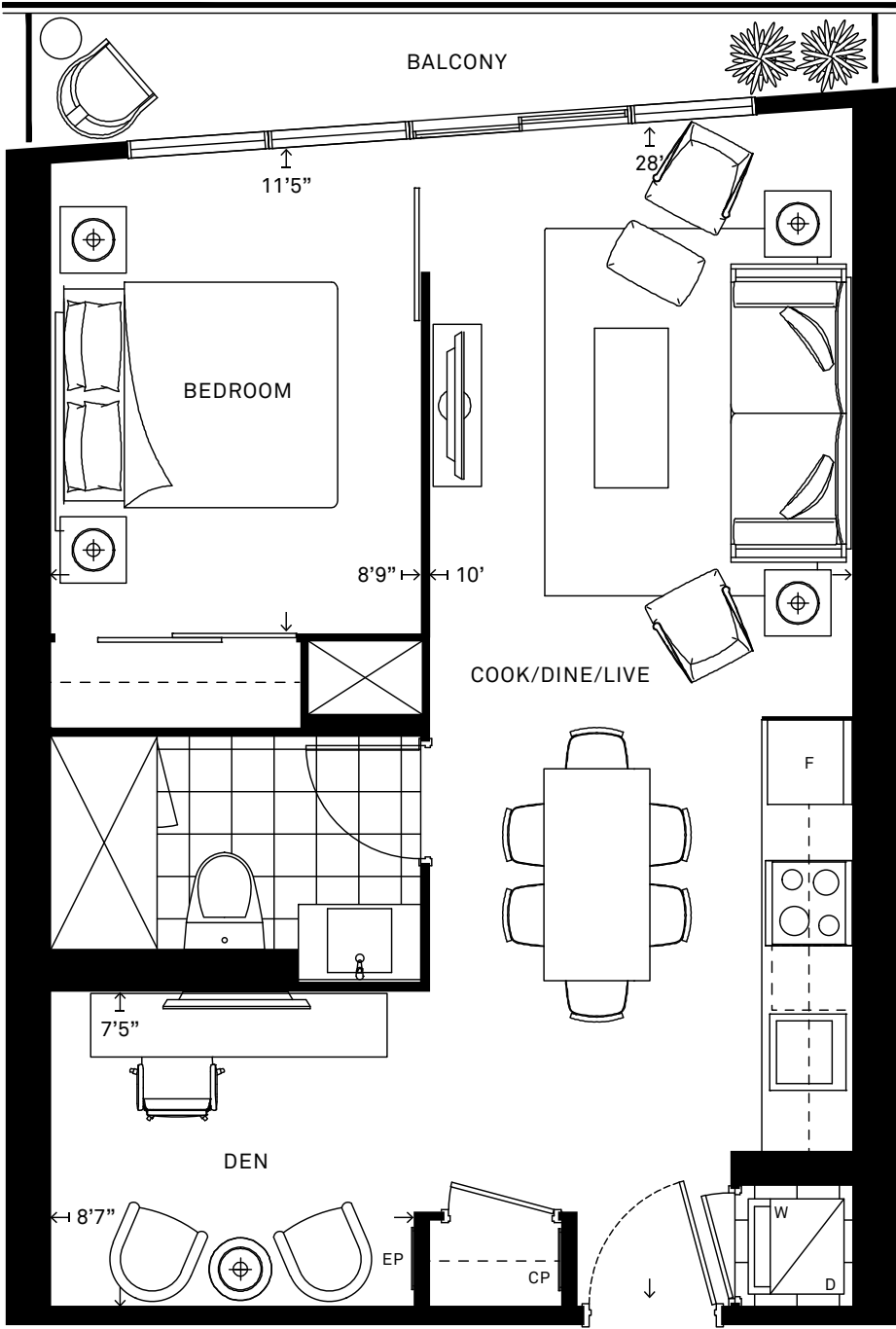
**Kambiz Farsian**  
Sales Representative  
**416.317.4438**



All dimensions are approximate and subject to normal construction variances. Dimensions may exceed the useable floor area. Size and specifications subject to change without notice. Furniture is displayed for illustration purposes only and does not necessarily reflect the electrical plan for the suite. Suites are sold unfurnished. E. & O. E. May 2014.

SUITE 1E + Da

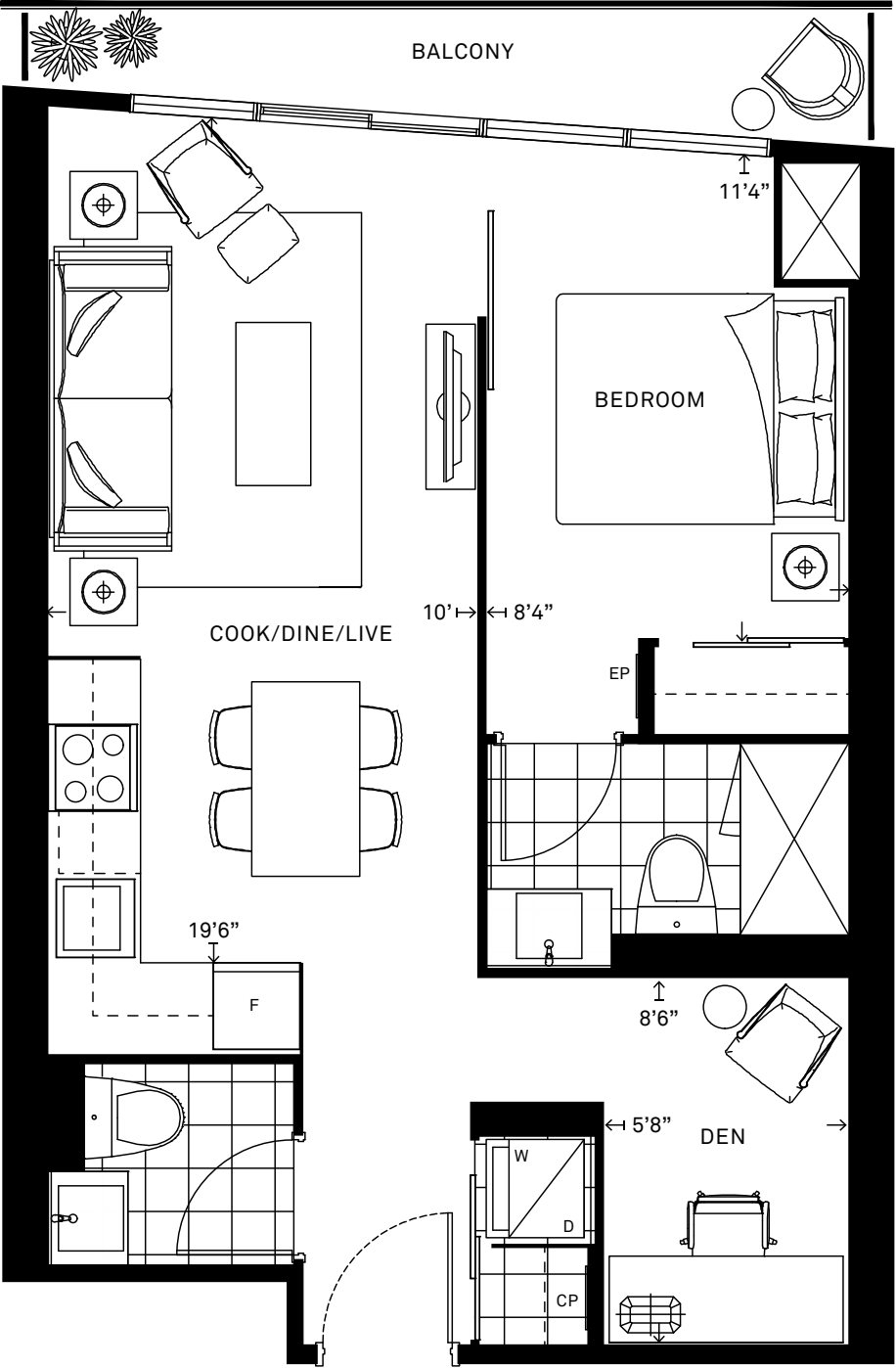
ONE BEDROOM + DEN



All dimensions are approximate and subject to normal construction variances. Dimensions may exceed the useable floor area. Size and specifications subject to change without notice. Furniture is displayed for illustration purposes only and does not necessarily reflect the electrical plan for the suite. Suites are sold unfurnished. E. & O. E. May 2014.

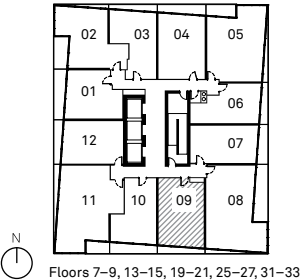
SUITE 1F + D

ONE BEDROOM + DEN



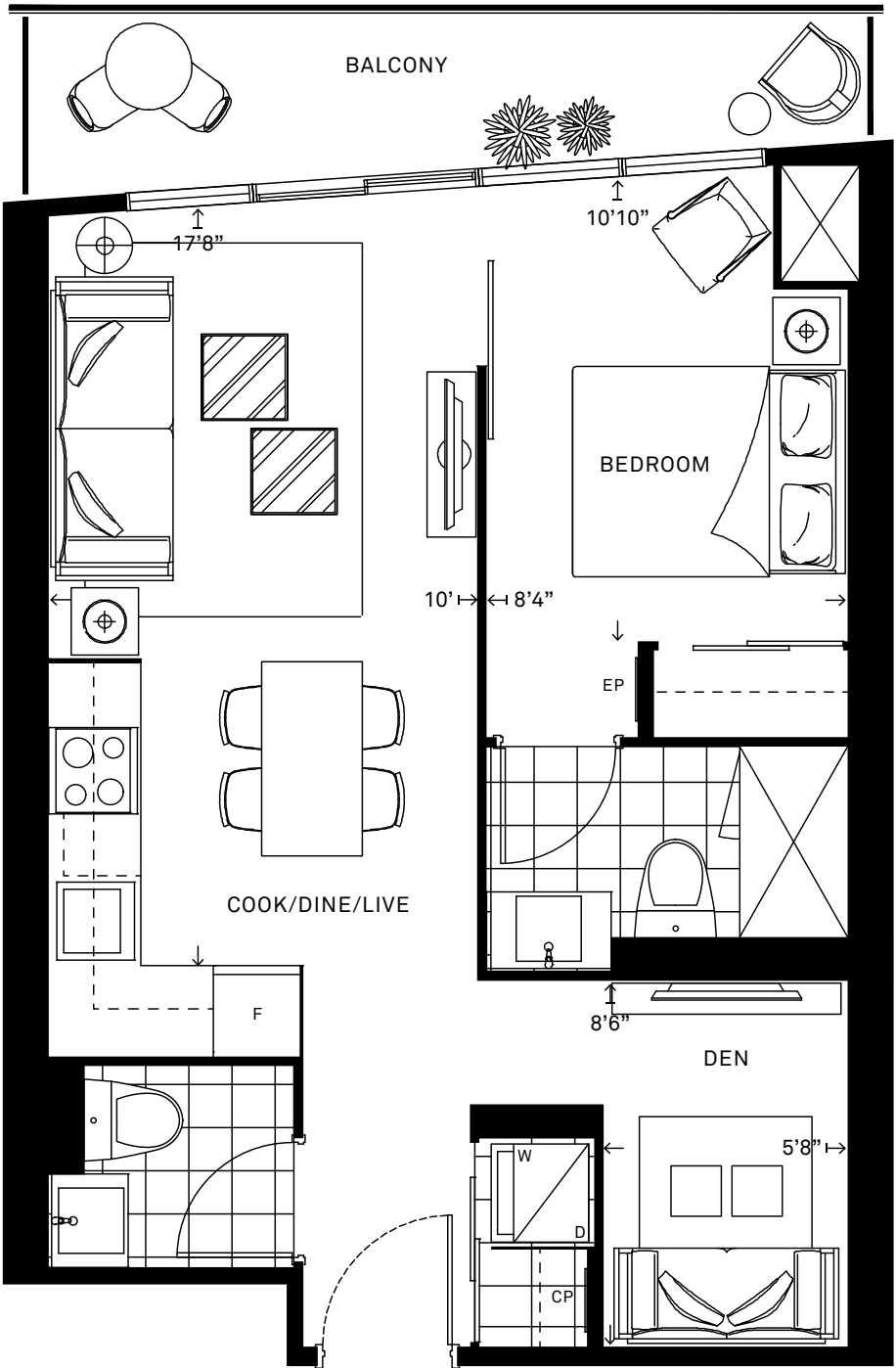
**Kambiz Farsian**  
Sales Representative  
**416.317.4438**

All dimensions are approximate and subject to normal construction variances. Dimensions may exceed the useable floor area. Size and specifications subject to change without notice. Furniture is displayed for illustration purposes only and does not necessarily reflect the electrical plan for the suite. Suites are sold unfurnished. E. & O. E. May 2014.

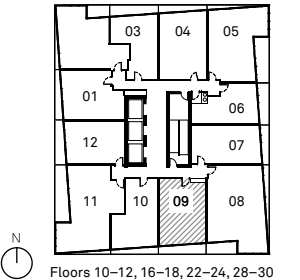


SUITE 1F + Da

ONE BEDROOM + DEN



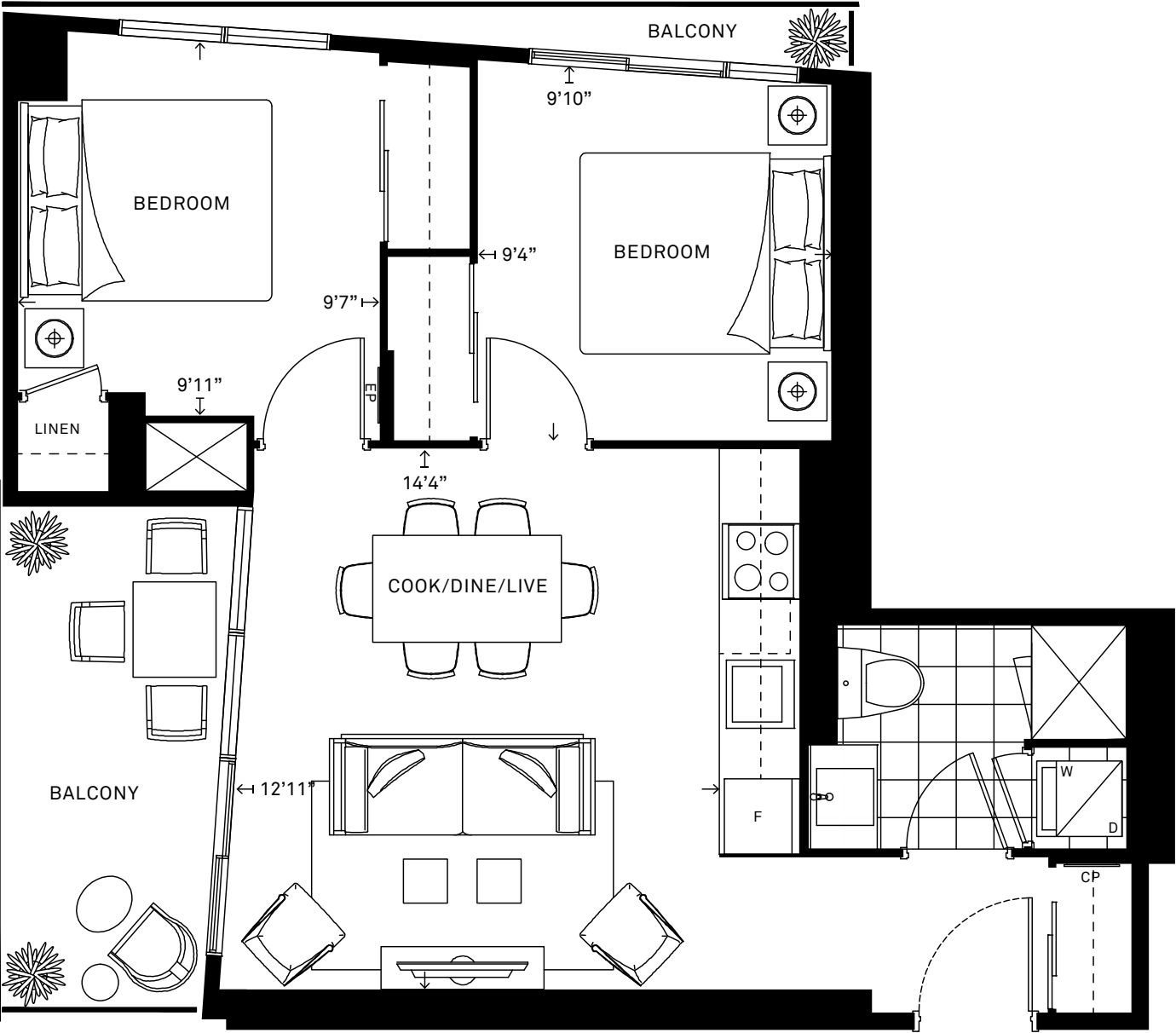
All dimensions are approximate and subject to normal construction variances. Dimensions may exceed the useable floor area. Size and specifications subject to change without notice. Furniture is displayed for illustration purposes only and does not necessarily reflect the electrical plan for the suite. Suites are sold unfurnished. E. & O. E. May 2014.



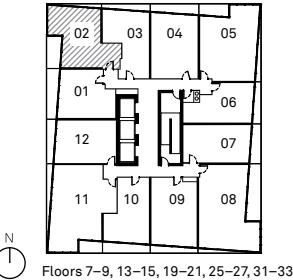


SUITE 2A

TWO BEDROOM



All dimensions are approximate and subject to normal construction variances. Dimensions may exceed the useable floor area. Size and specifications subject to change without notice. Furniture is displayed for illustration purposes only and does not necessarily reflect the electrical plan for the suite. Suites are sold unfurnished. E. & O. E. May 2014.

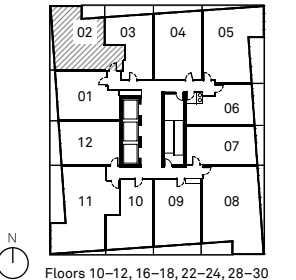


SUITE 2Aa

TWO BEDROOM

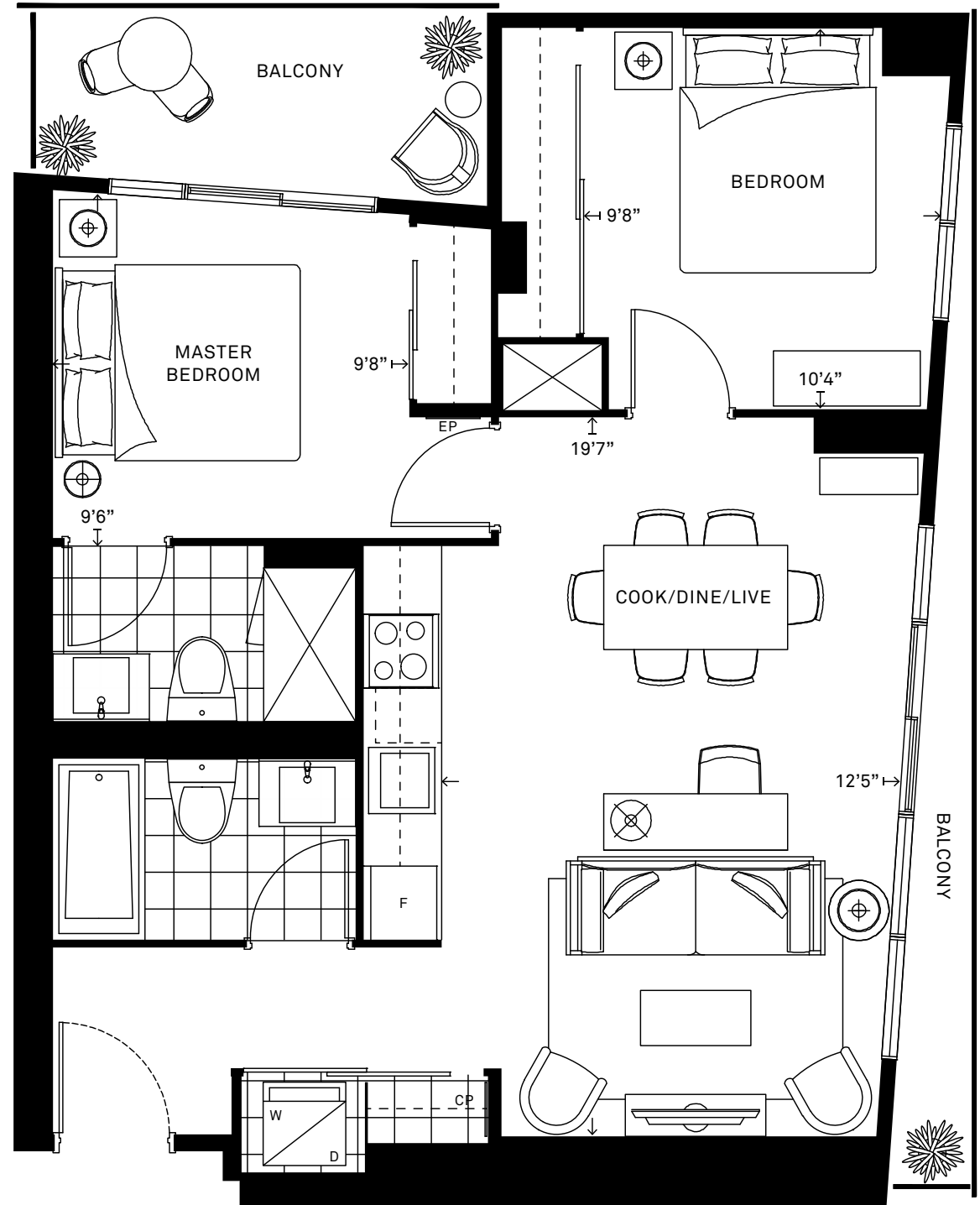


All dimensions are approximate and subject to normal construction variances. Dimensions may exceed the useable floor area. Size and specifications subject to change without notice. Furniture is displayed for illustration purposes only and does not necessarily reflect the electrical plan for the suite. Suites are sold unfurnished. E. & O. E. May 2014.



SUITE 2B

TWO BEDROOM

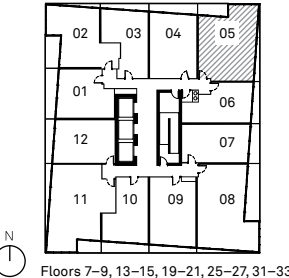


**Kambiz Farsian**

Sales Representative

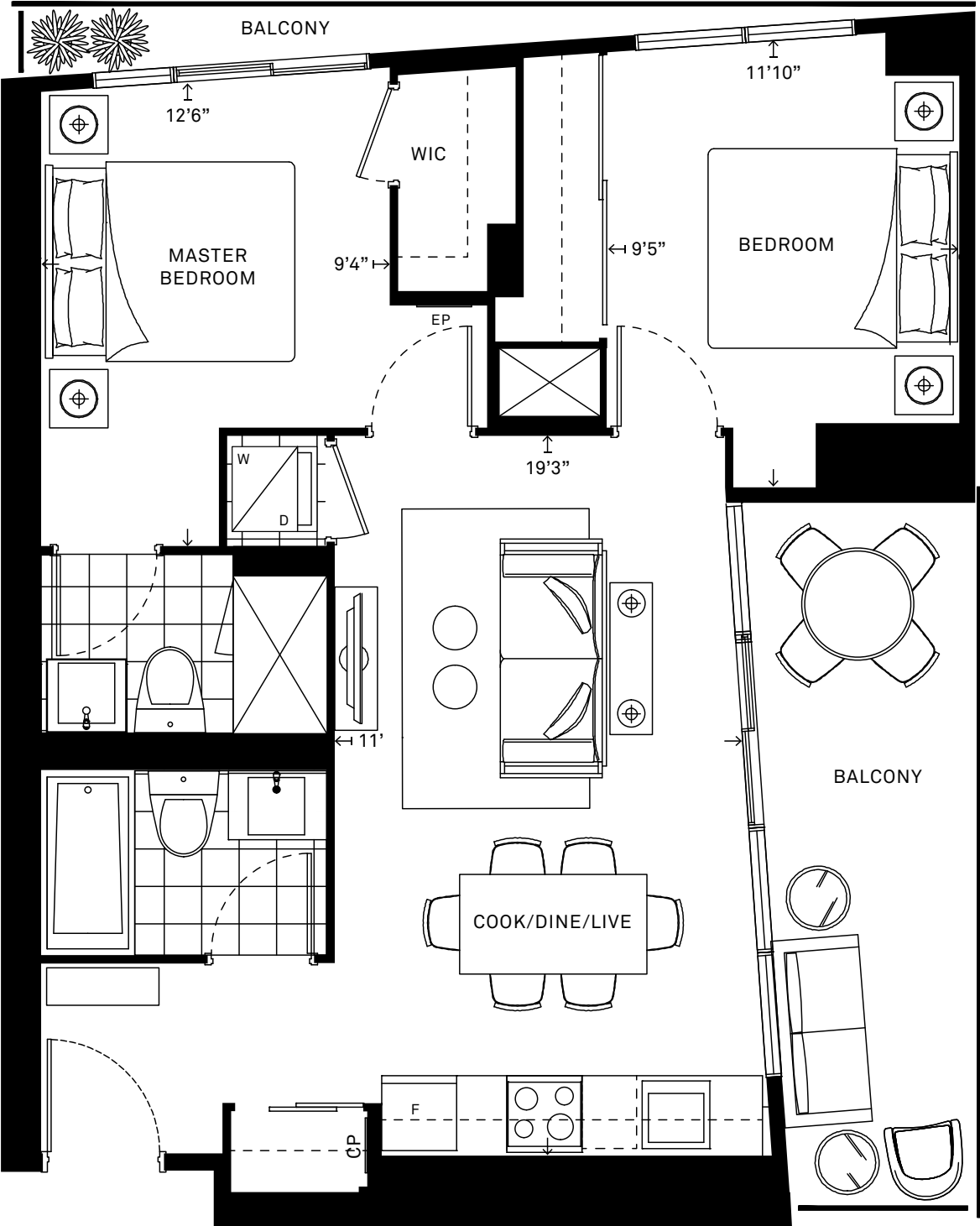
**416.317.4438**

All dimensions are approximate and subject to normal construction variances. Dimensions may exceed the useable floor area. Size and specifications subject to change without notice. Furniture is displayed for illustration purposes only and does not necessarily reflect the electrical plan for the suite. Suites are sold unfurnished. E.&O.E. May 2014.

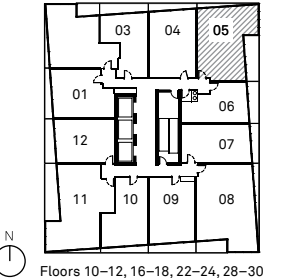


SUITE 2Ba

TWO BEDROOM

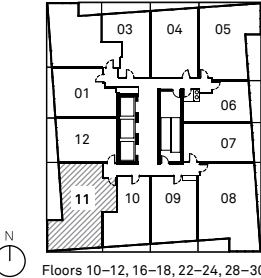
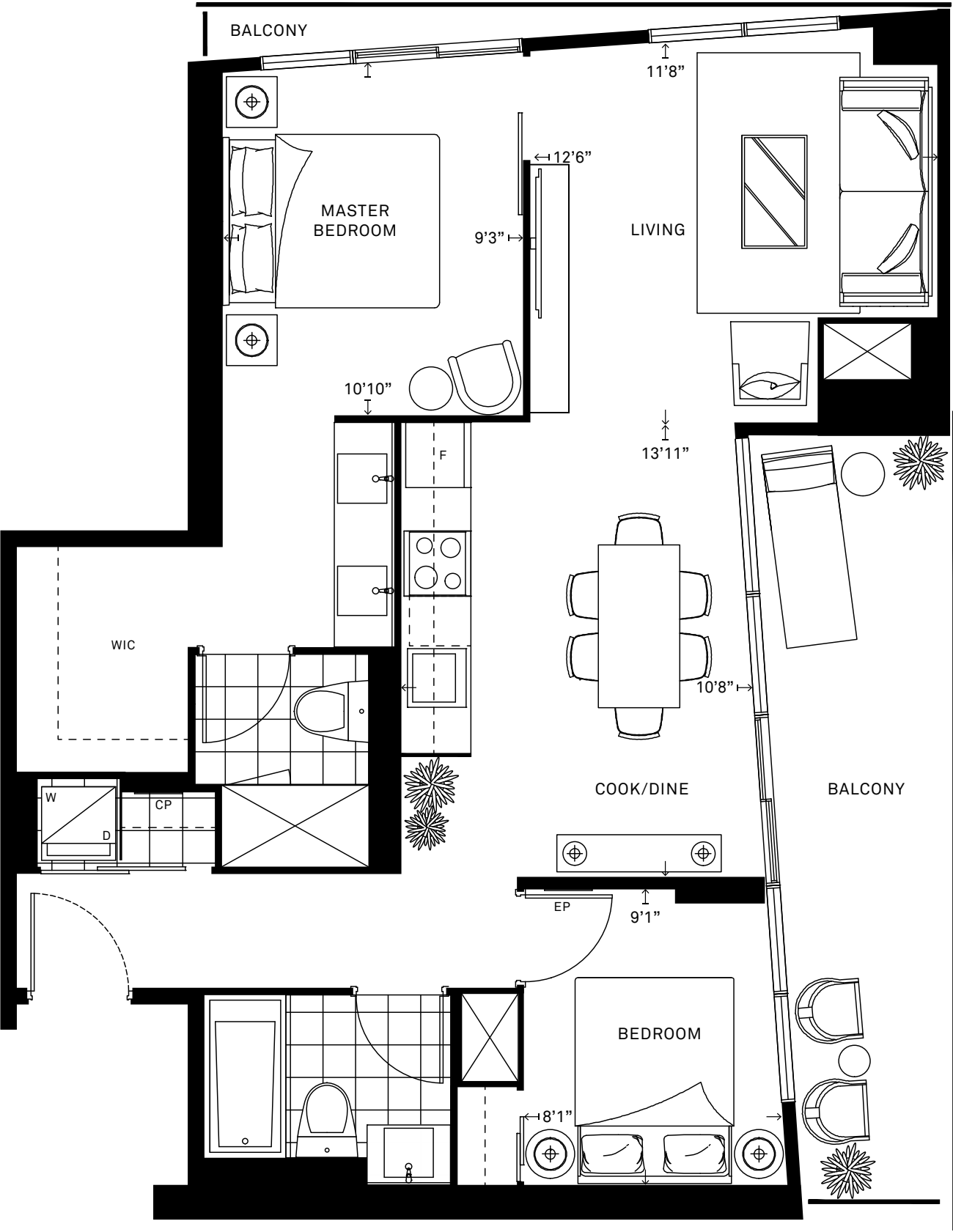


All dimensions are approximate and subject to normal construction variances. Dimensions may exceed the useable floor area. Size and specifications subject to change without notice. Furniture is displayed for illustration purposes only and does not necessarily reflect the electrical plan for the suite. Suites are sold unfurnished. E.&O.E. May 2014.



SUITE 2C

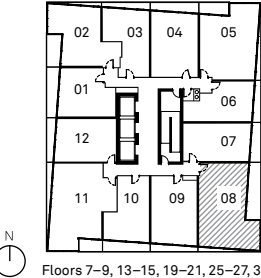
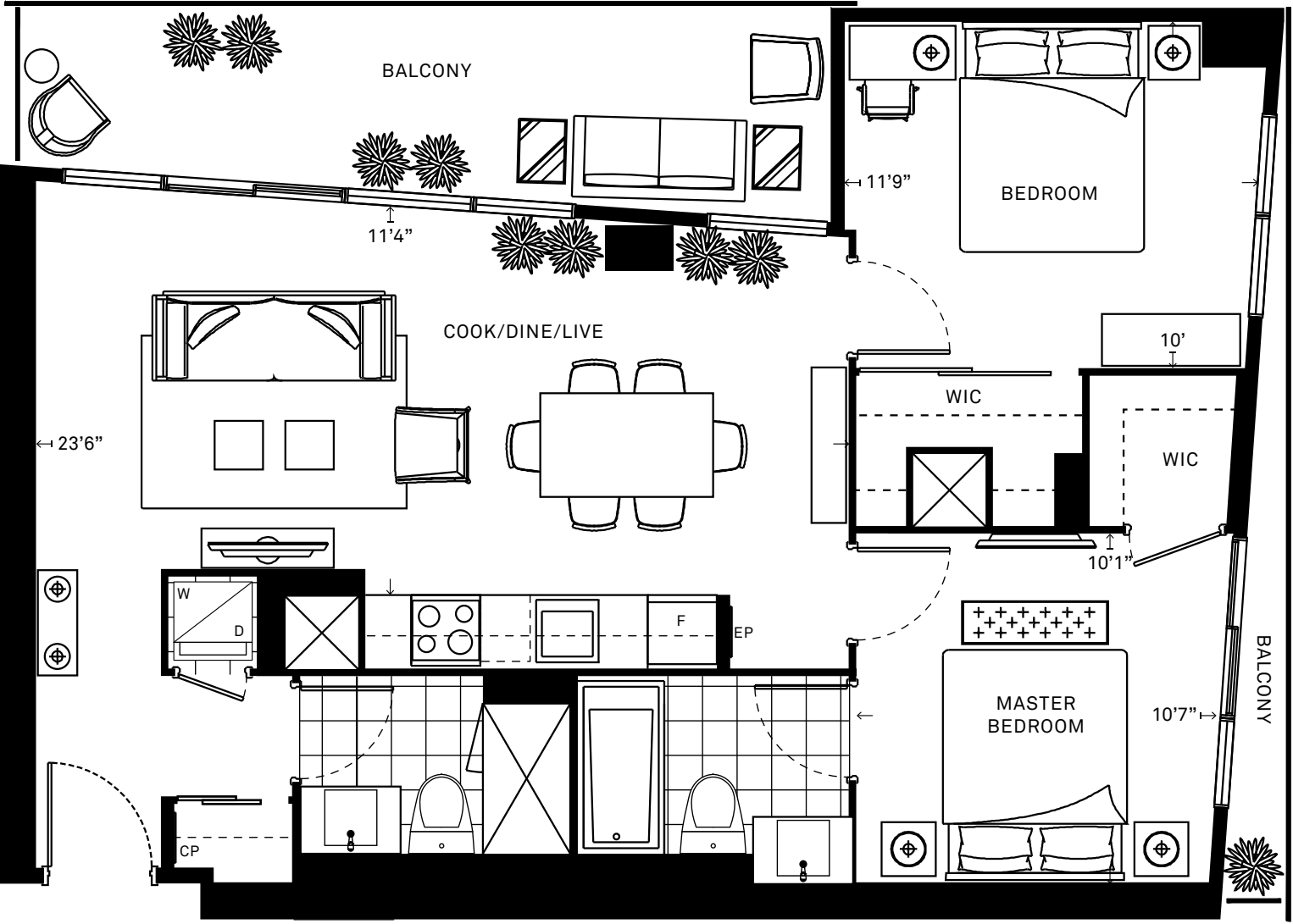
TWO BEDROOM



All dimensions are approximate and subject to normal construction variances. Dimensions may exceed the useable floor area. Size and specifications subject to change without notice. Furniture is displayed for illustration purposes only and does not necessarily reflect the electrical plan for the suite. Suites are sold unfurnished. E. & O. E. May 2014.

SUITE 2D

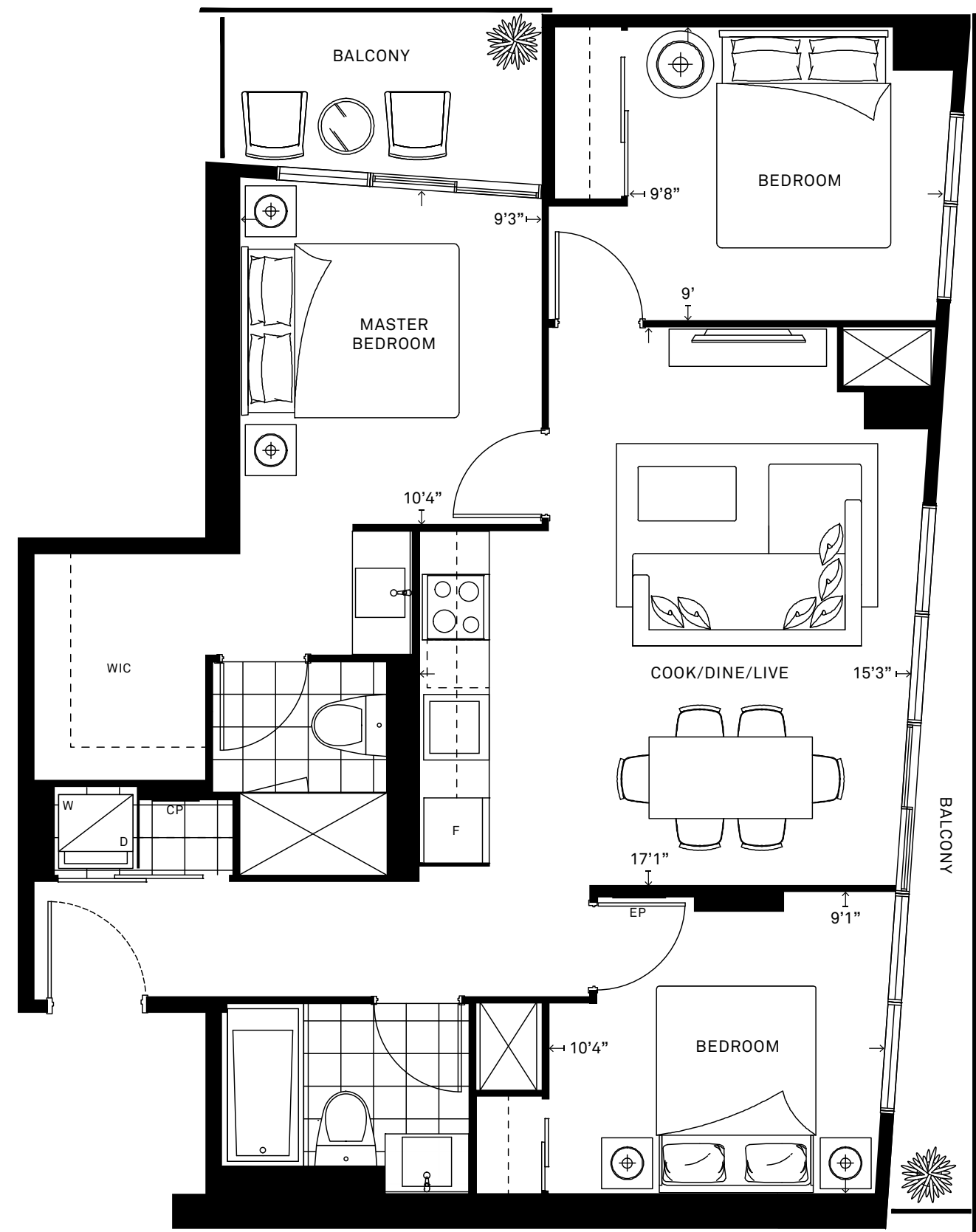
TWO BEDROOM



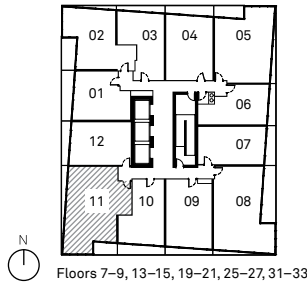
All dimensions are approximate and subject to normal construction variances. Dimensions may exceed the useable floor area. Size and specifications subject to change without notice. Furniture is displayed for illustration purposes only and does not necessarily reflect the electrical plan for the suite. Suites are sold unfurnished. E. & O. E. May 2014.

SUITE 3A

THREE BEDROOM

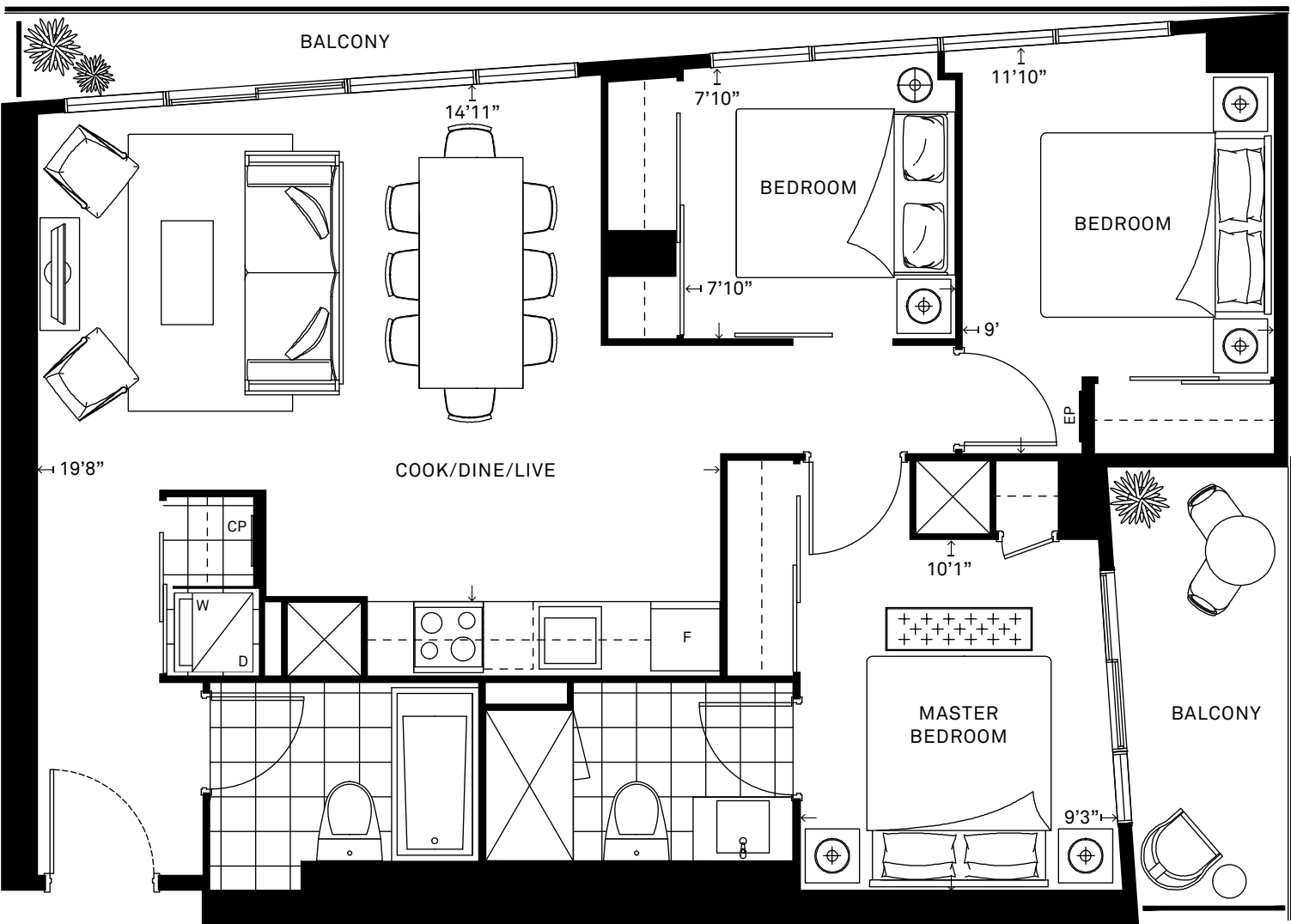


All dimensions are approximate and subject to normal construction variances. Dimensions may exceed the useable floor area. Size and specifications subject to change without notice. Furniture is displayed for illustration purposes only and does not necessarily reflect the electrical plan for the suite. Suites are sold unfurnished. E. & O.E. May 2014.

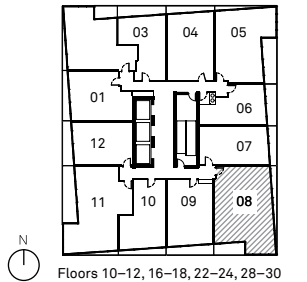


SUITE 3B

THREE BEDROOM



All dimensions are approximate and subject to normal construction variances. Dimensions may exceed the useable floor area. Size and specifications subject to change without notice. Furniture is displayed for illustration purposes only and does not necessarily reflect the electrical plan for the suite. Suites are sold unfurnished. E. & O.E. May 2014.



**Kambiz Farsian**

Sales Representative

**416.317.4438**

# SUITE FEATURES + FINISHES

### GENERAL

- A wide variety of unit sizes with ceiling heights of approximately 8'-0" for suites on the 6th to 12th and 14th to 23rd floors, and approximately 9'-0" for suites on the 5th, 13th and 24th to PH floors. Quoted ceiling heights are exclusive of ceiling bulkheads and/or dropped ceilings, in order to facilitate the installation of structural components, mechanical systems and/or ductwork.
- Premium plank laminate floating floor\*\*\* with acoustic underlay in bedroom(s), foyer\*, hallways\*, den\*, living and dining area\* and in kitchen\*.
- Choice of ceramic and/or porcelain floor tile\*\*\* in bathroom(s), laundry and storage\* areas.
- White ceramic floor tile in laundry.

### KITCHENS

- Choice of contemporary style cabinetry\*\*\* with double square edge granite or engineered quartz counter top\*\*\*.
- Stainless steel drop-in sink.
- Low-flow chrome, single lever kitchen faucet, complete with pull down spray.
- Energy Star® high efficiency, built-in panel ready 18" dishwasher.
- Energy Star® panel ready refrigerator.
- Microwave with built-in high capacity hood fan vented to exterior in stainless steel finish.
- 24" built-in ceramic cooktop.
- 24" built-in oven.
- Ceramic tile\*\*\* backsplash.

### BATHROOMS

- Contemporary vanity cabinetry\*\*\* with cultured marble countertop\*\*\* complete with integrated rectangular bowl.
- Vanity mirror and wall sconce lighting.
- Deep soaker bathtub\*.
- Showers.
- Low-flow single lever sink faucets.
- Low-flow, high pressure showerheads.
- Temperature controlled and pressure balanced, shower faucet.
- Dual flush, low-flow high performance toilet(s).

### LAUNDRY

- Heavy-duty wiring and receptacle for dryer.
- Ventilation to exterior.
- Stacked front loading dryer and Energy Star®, high efficiency, front loading washer (complete with stainless steel flexible hoses). Stacked laundry appliances are white in colour.

### SAFETY + SECURITY

- Concierge monitoring community access systems including two-way communication from selected zones in underground garage and entry areas.
- Personally encoded suite intrusion alarm system, suite door contact and keypad connected to Concierge station.
- Access control system located in the lobby vestibule and at visitors main entry points permits guests to communicate with residents from the building entrance(s). Guests in the lobby vestibule can be viewed in the resident's suite.
- Surveillance cameras in selected locations in the points of access to the building and garage may be monitored by the Concierge.
- Emergency response key chain pendants, usable in selected areas within the underground garage, will alert the concierge of a distress call (2 per suite).
- In-suite sprinkler system.
- Hard wired smoke alarm(s) and fire alarm speaker.

### COMFORT SYSTEM

- Two pipe vertical fan coil heating and air conditioning system, complete with integrated heat recovery ventilator providing fresh air and heat recovery. Supplementary heating coil installed for year round seasonal comfort control.
- Individual metering of electricity, domestic hot water, space heating and cooling consumption.
- Direct venting to the outside of kitchen hood and dryer exhaust.
- Central building water filtration system.
- Superior air filter media for use in fan coil.
- Integrated in-suite fan coil units.

### ELECTRICAL SERVICE + FIXTURES

- Individual service panels with circuit breakers.
- Designer series receptacles and switches throughout.
- Light fixtures in foyer, walk-in closet(s)\*, bedroom(s), kitchen and den\*.
- Capped ceiling light outlet in the main living area\*.
- Lighting fixtures designed to fit long-lasting, energy saving lamps.

### COMMUNICATIONS

- Central high-speed wiring connection point.
- Pre-wired cable outlet in living room and bedroom(s).
- One multi-port outlet (telephone and cable connections located on the same faceplate) will replace a prewired cable outlet, installed in a location determined by Vendor.

\* Denotes availability determined by suite design.

\*\*\* Denotes finishes to be selected from the vendor's samples.

All features and finishes subject to change without notice, E. & O.E. April 23, 2014

# Tridel Built Green. Built for Life.®



Tridel has claimed the title of the most environmentally friendly condo builder in the GTA more times than any other builder in the industry. We build communities that are environmentally responsible, safe and healthy places to live. We are determined to develop condominium residences that meet the needs of today's homeowners while safeguarding the wellbeing of future generations. We do this by focusing on environmentally sustainable building design and performance in construction, property management and corporate stewardship. This is why Tridel is Built Green. Built for Life.®