

TRIDEL[®]
BUILT FOR LIFE

ROWNTREE[™]
ENTERPRISES

AUBERGE

ON THE PARK[™]

Enjoyed from the comfort of terraced balconies, *Auberge on the Park* is a breath of fresh air, a vibrant force that rises above an iconic and storied locale. Once a world-renowned urban resort and the first of its kind, Inn on the Park was the place to see and be seen, effectively crystalizing the luxury now synonymous with Leslie and Eglinton.

Today, nestled up against Leaside and Bayview Avenue, amidst the extravagant estate homes of Bridle Path and Hoggs Hollow, a breeze away from boutique-lined Mount Pleasant and effervescent Yonge Street, the aura surrounding Auberge on the Park is one steeped in affluence, history, leisure and a wealth of plush, green parkland.



A full-page photograph of a park. Sunlight filters through a line of trees in the background, creating a hazy, golden atmosphere. The sun is positioned behind a tree on the right, casting long, soft shadows across a lush green lawn. The grass is vibrant green with some fallen leaves scattered about. The overall mood is peaceful and natural.

AUBERGE

ON THE PARK™



ARCHITECTURE

Surrounded by indulgent views of foliage, city, and Sunnybrook Park, Auberge on the Park offers condominium luxury in nature. Rising above this iconic, history-steeped location, the contemporary terraced building is a marvel of architecture that both improves upon and seamlessly complements its surroundings.





AUBERGE
ON THE PARK™

SITE PLAN

A NETWORK OF LEAFY TRANQUILITY.

Nestled amongst the verdant Sunnybrook parkland, Auberge on the Park is wreathed by a vast network of lushly treed pathways and interconnected corridors of leafy tranquility.





Illustrations are artist's concept only. Specifications subject to change without notice. E. &O.E. October 2017.



VIEWS FROM YOUR PRIVATE TERRACE



AUBERGE ON THE PARK

CENTRAL COMMUNITY PARK

A meticulously manicured tree-lined promenade leads toward the grand front entrance. Mirroring its parkland surroundings, an organically shaped and lusciously landscaped community park is your very first taste of Auberge on the Park.







AMENITIES

AUBERGE ON THE PARK



FIRST FLOOR AMENITIES

The first floor has been carefully considered to work in harmony with the foliage rich surroundings. A social setting, the main area is well-lit, spacious, and bedecked with comfortable sofas, perfect for mingling with company.

- 1 GRAND FRONT ENTRANCE
- 2 LOBBY AND CONCIERGE
- 3 LOBBY LOUNGE
- 4 MULTIMEDIA ROOM
- 5 PRIVATE DINING ROOM
- 6 AMENITIES ENTRANCE + LOUNGE
- 7 PARTY ROOM
- 8 ELEVATOR
- 9 MAIL ROOM
- 10 CENTRAL COMMUNITY PARK



Illustrations are artist's concept only. Specifications subject to change without notice. E. &O.E. October 2017.



FIFTH FLOOR AMENITIES

Establish a workout tailored to your exercise preferences and level of expertise with a range of state-of-the-art fitness equipment and pool. A visit to the fifth floor always leaves you feeling relaxed and rejuvenated.

- 1 OUTDOOR SWIMMING POOL
- 2 WHIRLPOOL SPA
- 3 CHANGING ROOMS
- 4 PRIVATE OUTDOOR CABANAS + BBQS
- 5 TERRACE DINING
- 6 YOGA STUDIO
- 7 SPIN STUDIO
- 8 FITNESS CENTRE
- 9 ELEVATORS
- 10 PET AMENITY SPACE





THE LUXURIOUS LOBBY

A curved statement chandelier anchors a refined foyer, organically twisting towards a cluster of plush, oversized seating. Natural materials like classic marble and visibly grained wood work to create an overall aesthetic of calm, as fresh pops of purple evoke a subtle *je ne sais quoi*.





LOBBY LOUNGE

AUBERGE ON THE PARK

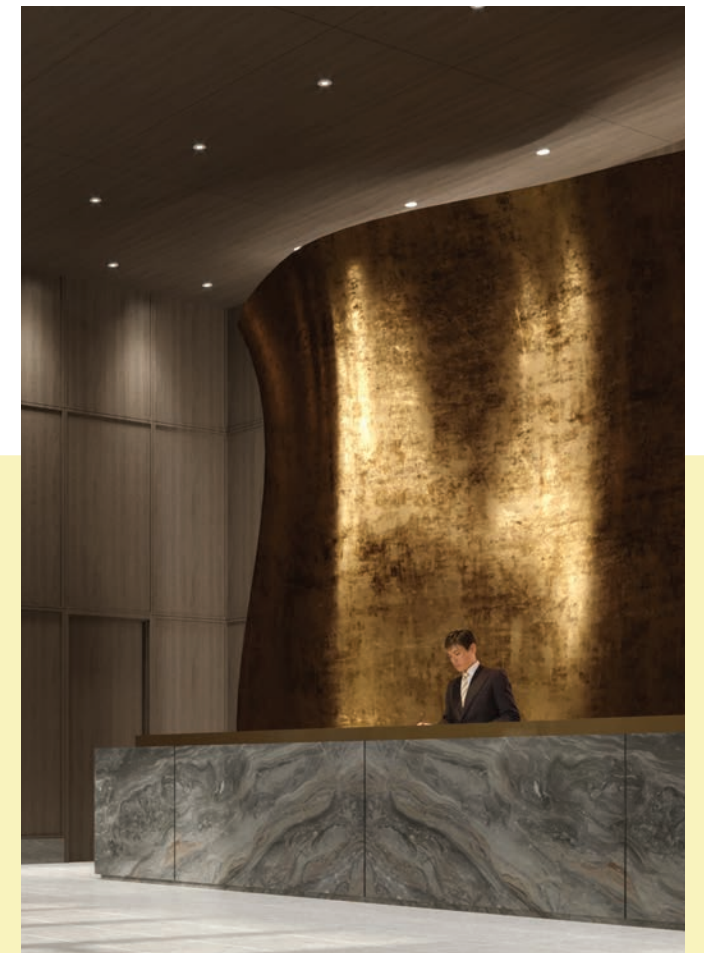


GRAND LOBBY ENTRANCE



THE SOARING ENTRYWAY

Soaring floor-to-ceiling windows are the perfect backdrop to a whimsically appointed art feature that is elegant, soothing and inspiring.







ENTERTAIN YOUR SENSES

Playfully decorative flourishes, like over-sized floral pendant lamps, lend charm to a French-inspired vestibule, welcoming you to the Party Room. Elegantly paired with rich marbled surfaces, a soothing sense of balance is expertly established.





THE PARTY ROOM

For large gatherings, the elegant party room plays host to your special events and celebrations with gorgeous designs, ample seating, and intimate lighting.



AMENITIES ENTRANCE



THE SPIN STUDIO

Wooden grained floors and textured walls provide the perfect setting for cycling away stress, and energizing the soul. State-of-the-art stationary bikes promise to make spinning your favourite new way to begin the day.

THE FITNESS CLUB

Natural wood paneling creates a calming, atmospheric touch, an impossibly elegant environment for whatever your fitness routine presents. Fully outfitted with state-of-the-art equipment, the Augerge fitness club caters to your every need.



SWIMMING POOL AND OUTDOOR TERRACE

Whether you want a sunny lunch spot or an area to barbeque and socialize with friends, the grand terrace is yours to enjoy. Suntan on the beach chairs, take a dip in the refreshing pool, or admire the surrounding greenery.



PRIVATE CABANAS AND BBQS





INTERIORS

AUBERGE ON THE PARK





SIGNATURE KITCHEN & DINING

SIGNATURE LIVING AREA

Warm, modern, and elegantly chic, the open-plan living and kitchen area is a place to gather and get comfortable. Expansive windows ensure this space is awash with natural light, adding an overall sense of grandeur to the room.

SIGNATURE KITCHEN & DINING

Vast views of the city and foliage below help you prepare inspiring meals in your kitchen and adjacent dining room. Brilliantly arranged with top of the line appliances and sleek storage, you will have plenty of room to entertain.







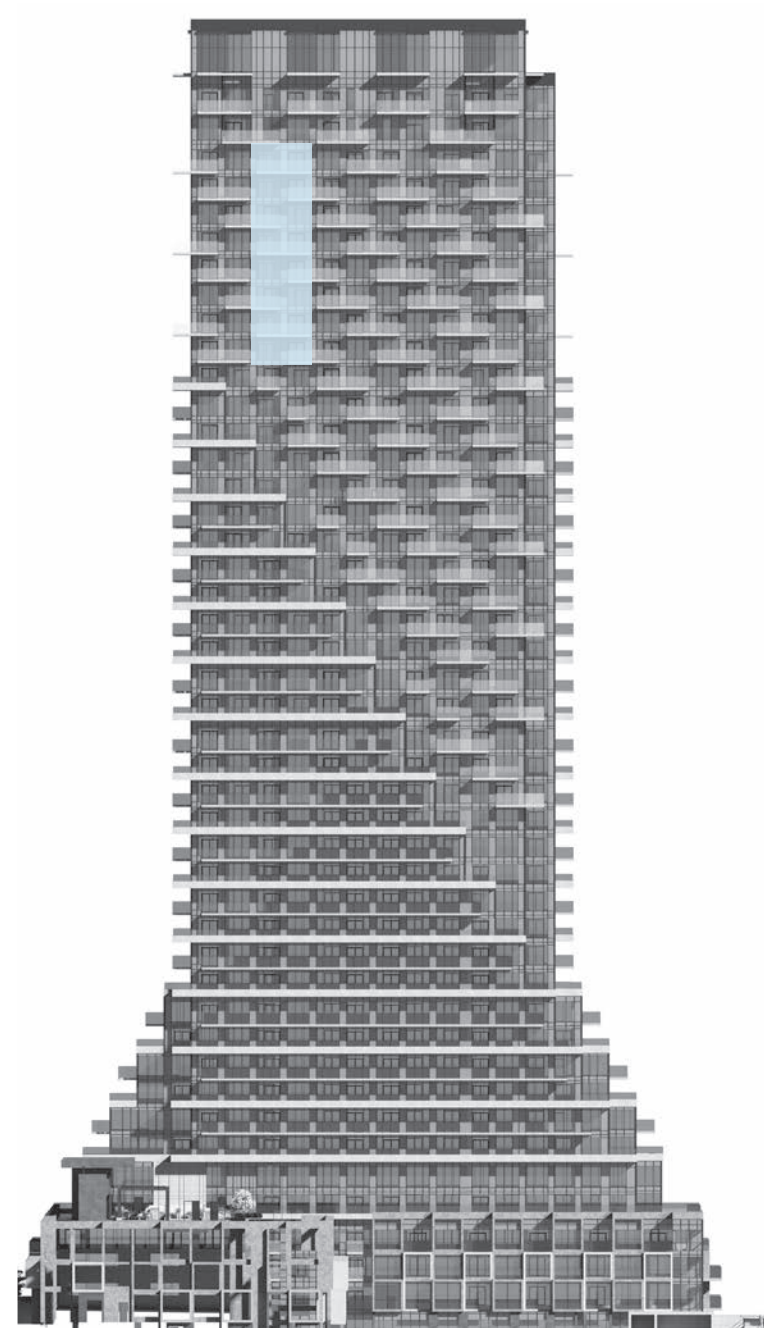
FLOORPLANS

AUBERGE ON THE PARK

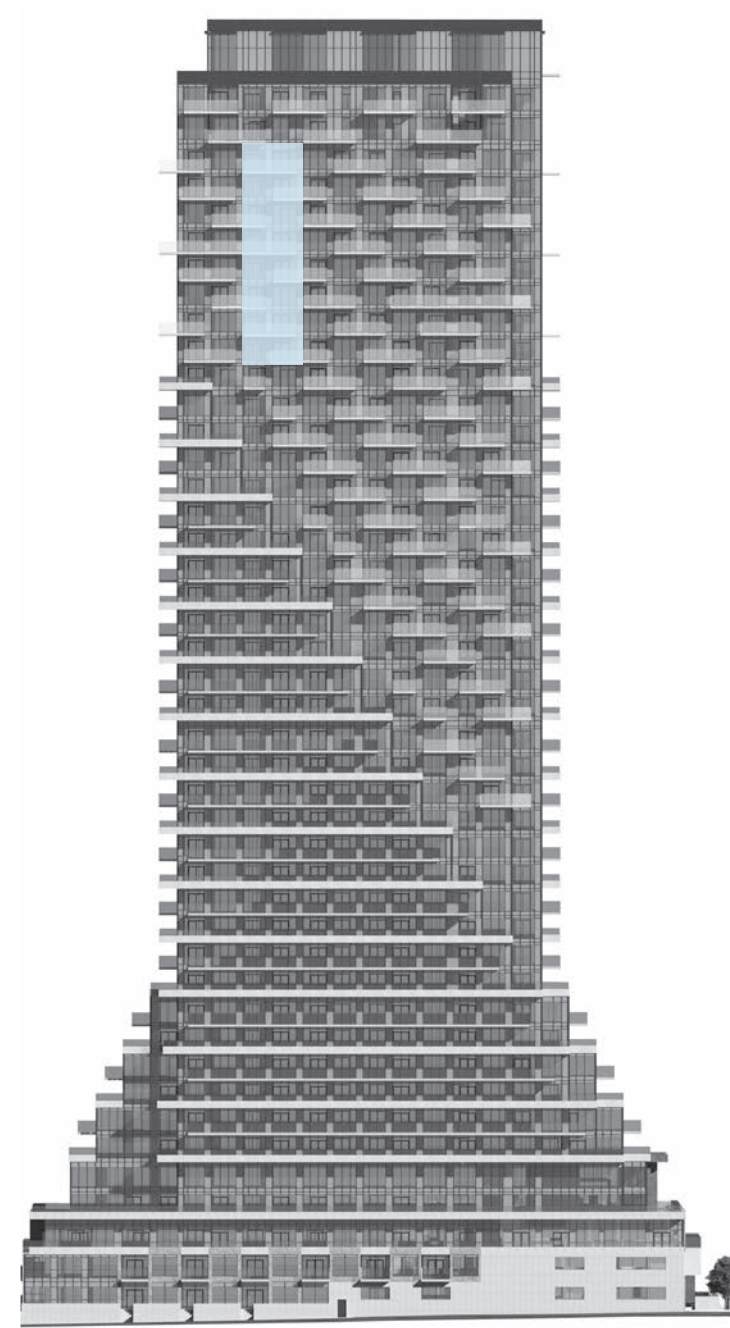
1A

1 BEDROOM
1 BATHROOM

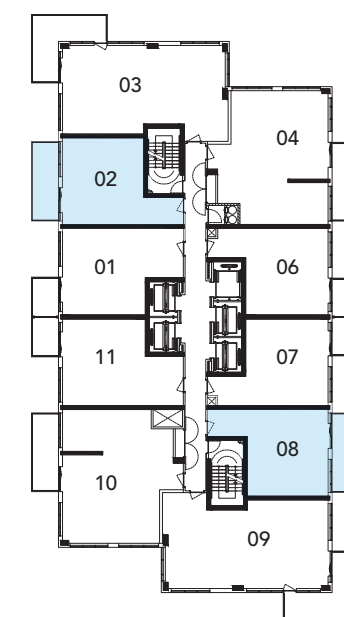
36



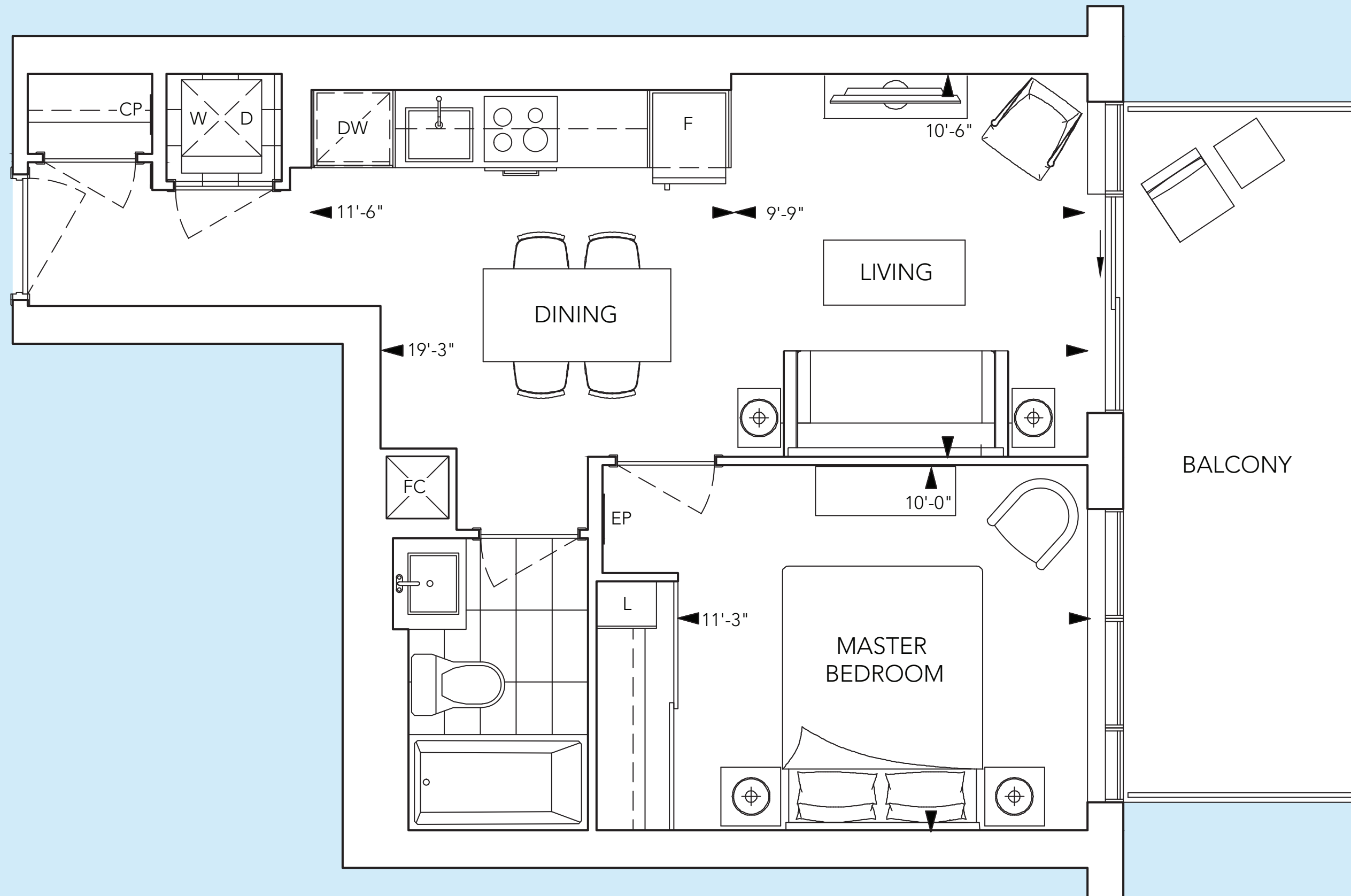
WEST FACE



EAST FACE



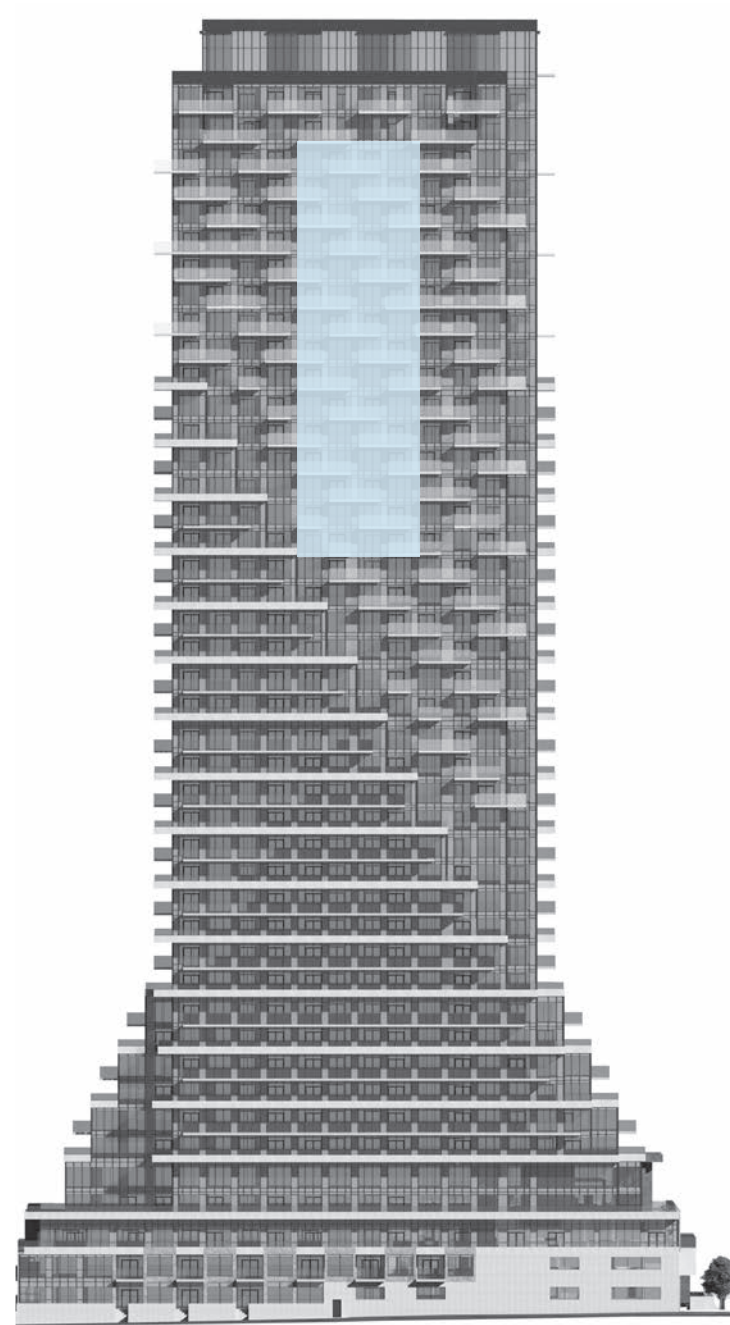
FLOOR 37



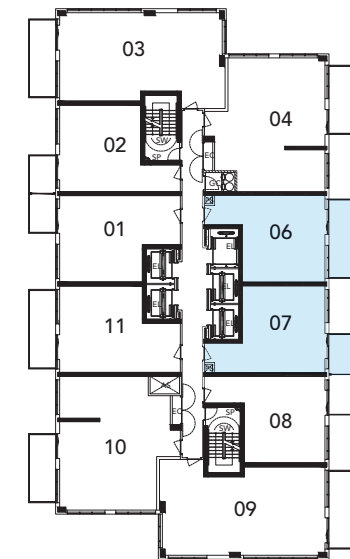
1B/1BR

1 BEDROOM
1 BATHROOM

38

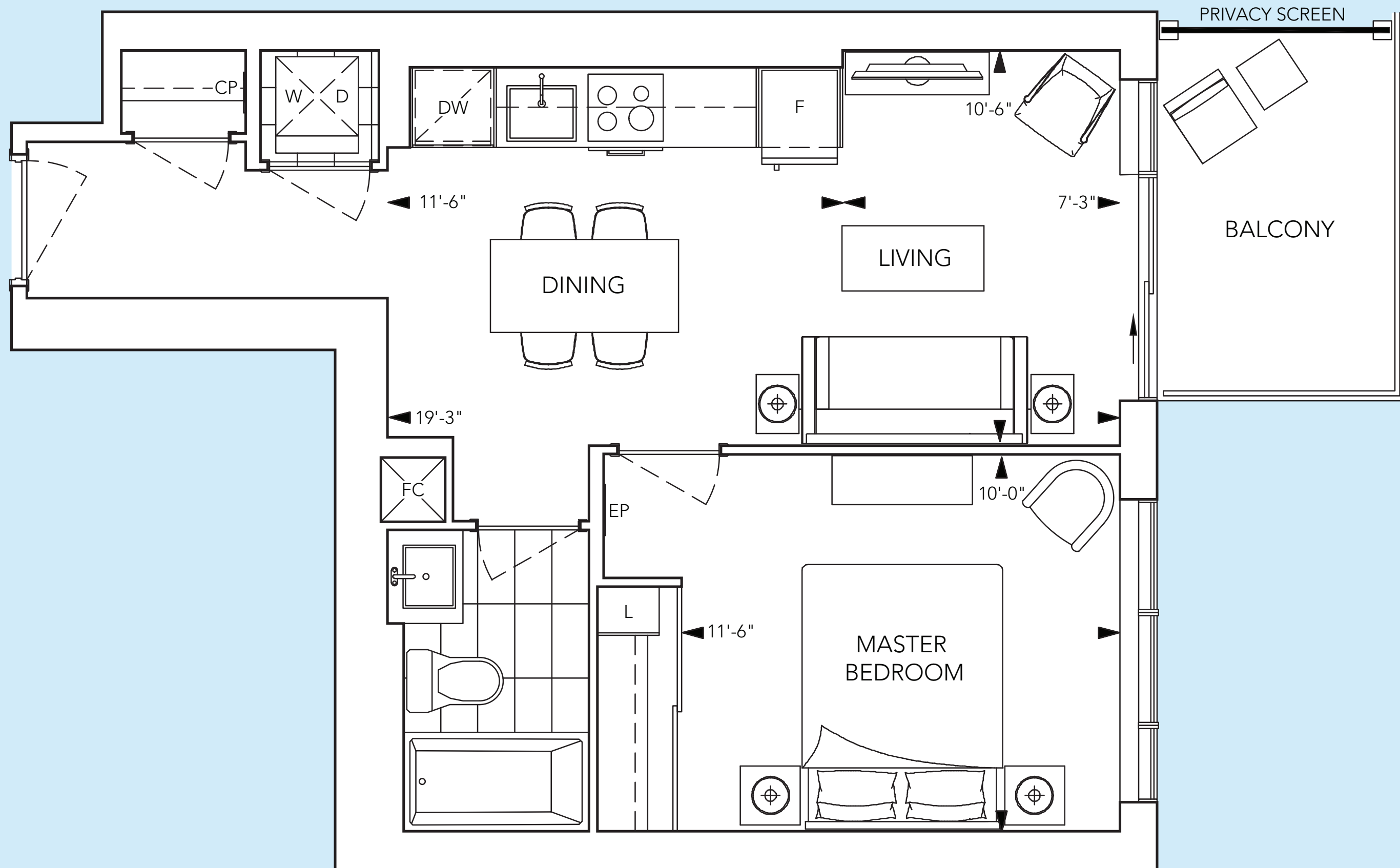


EAST FACE



FLOOR 36

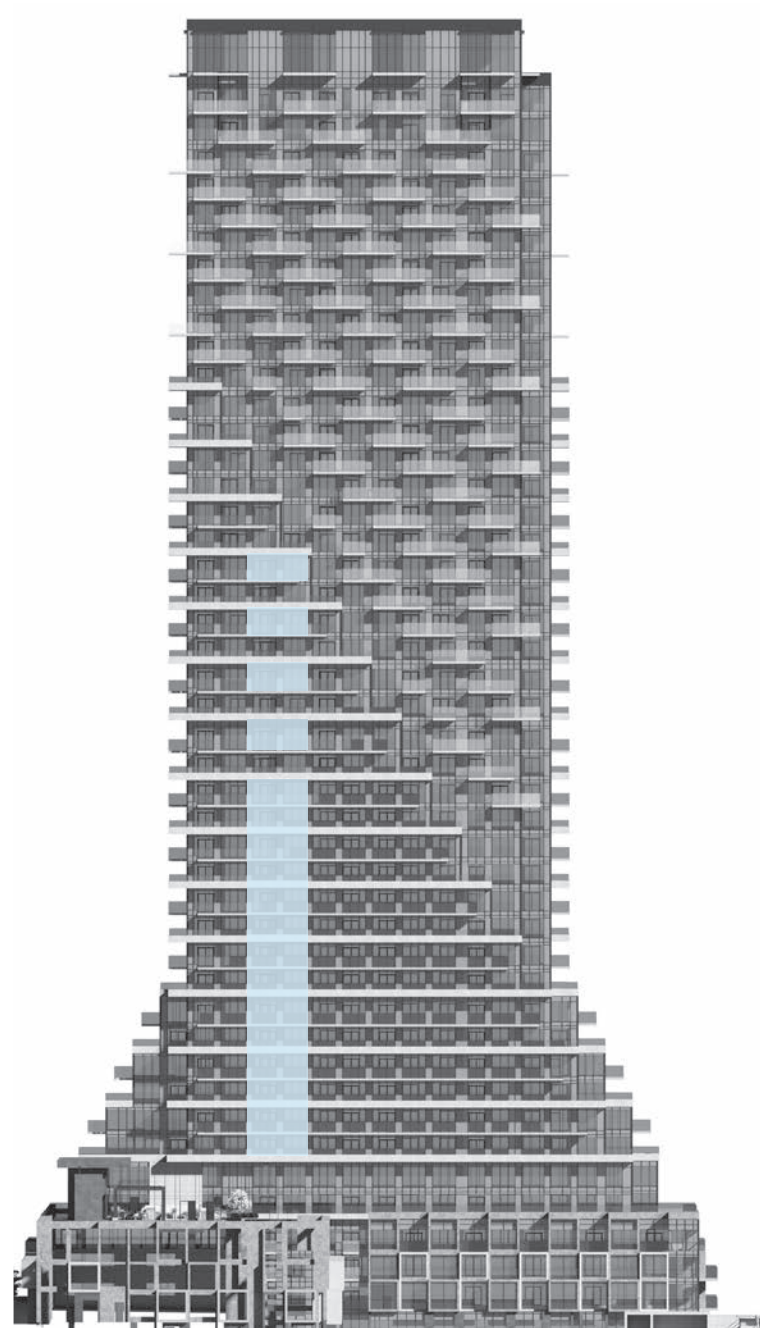
N
▲



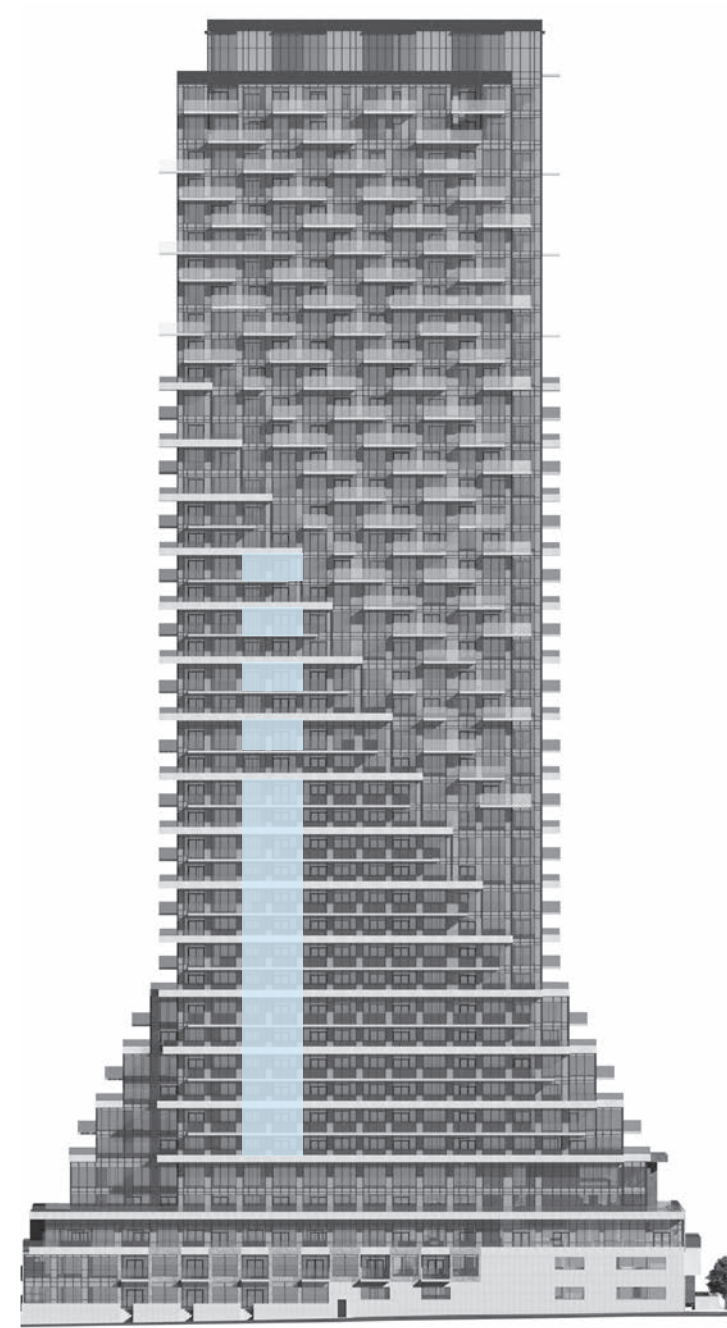
1C

1 BEDROOM
1 BATHROOM

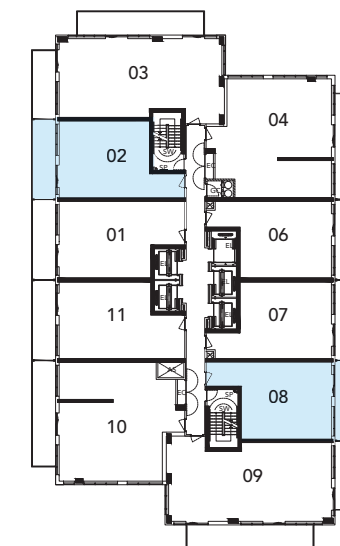
40



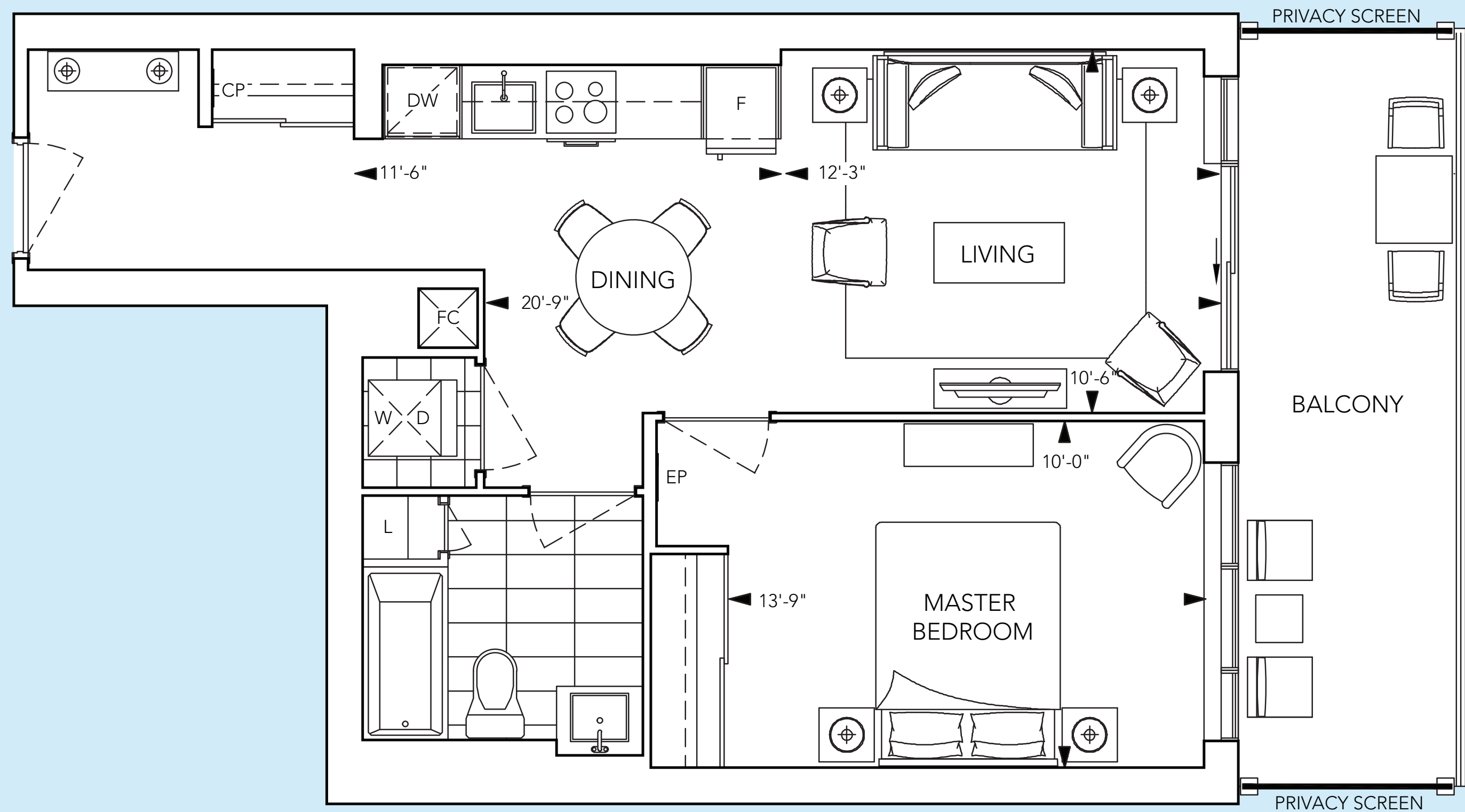
WEST FACE



EAST FACE



FLOOR 14

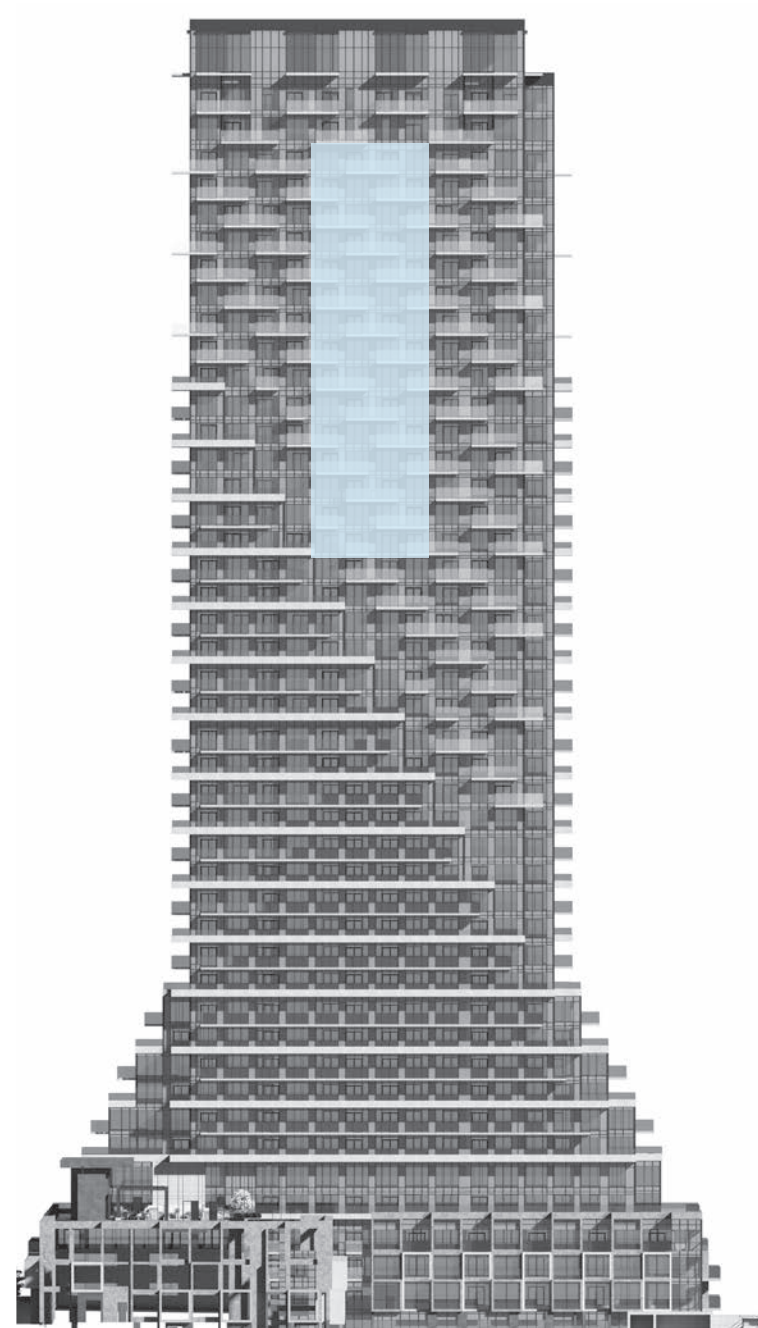


All dimensions are approximate and subject to normal construction variances. Dimensions may exceed the useable floor area. Sizes and specifications subject to change without notice. Furniture is displayed for illustration purposes only and does not necessarily reflect the electrical plan for the suite. Suites are sold unfurnished. Balcony and façade variations may apply, contact a sales representative for further details. E.&O.E. Tridel, Tridel Built for Life and Tridel Built Green. Built for Life are registered trademarks of Tridel and used under license. ©Tridel 2017. All rights reserved. October 2017.

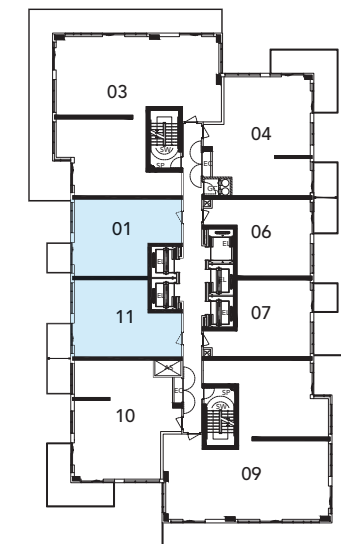
1D+D/ 1D+DR

1 BEDROOM + DEN
1 BATHROOM

42

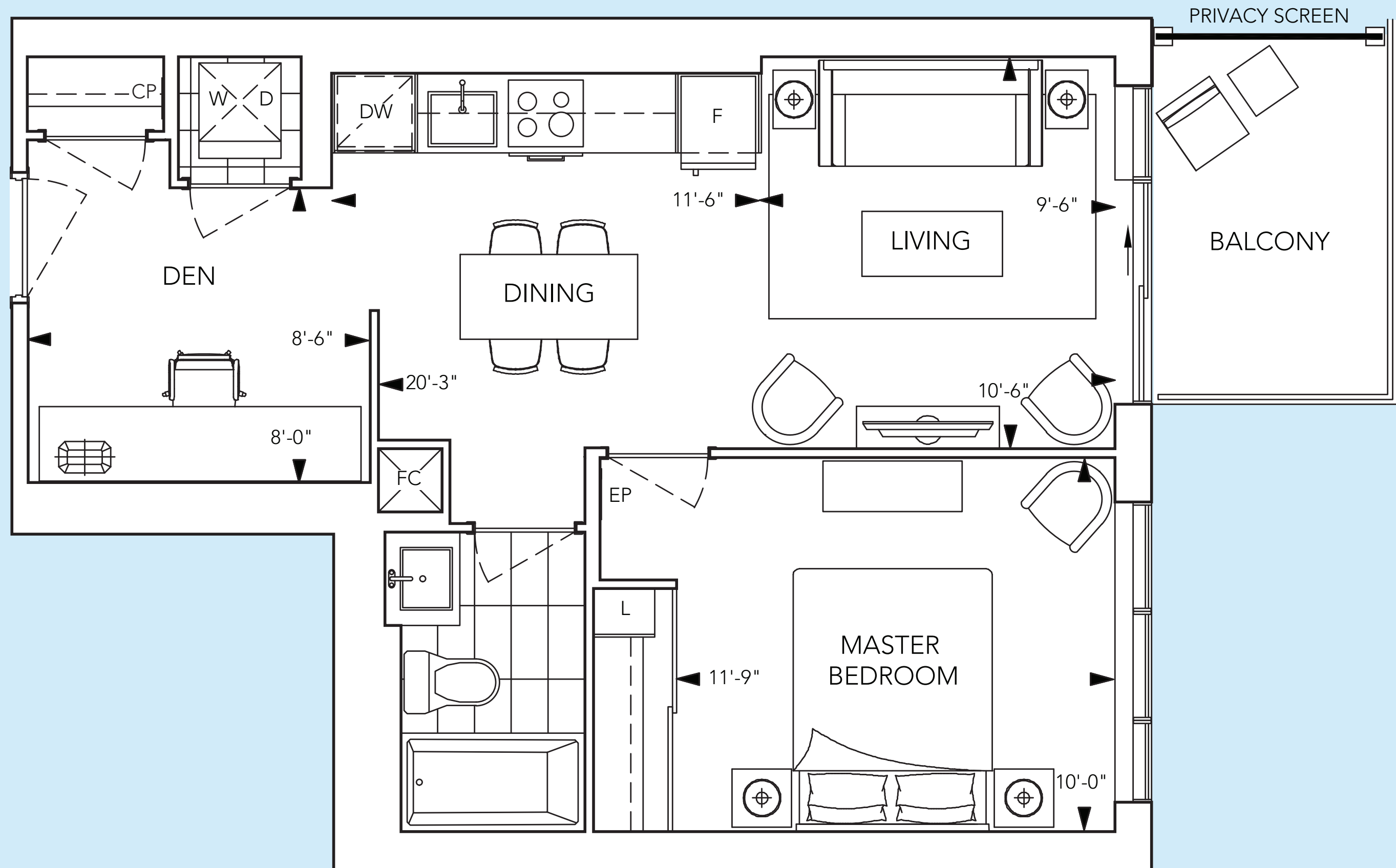


WEST FACE



FLOOR 29

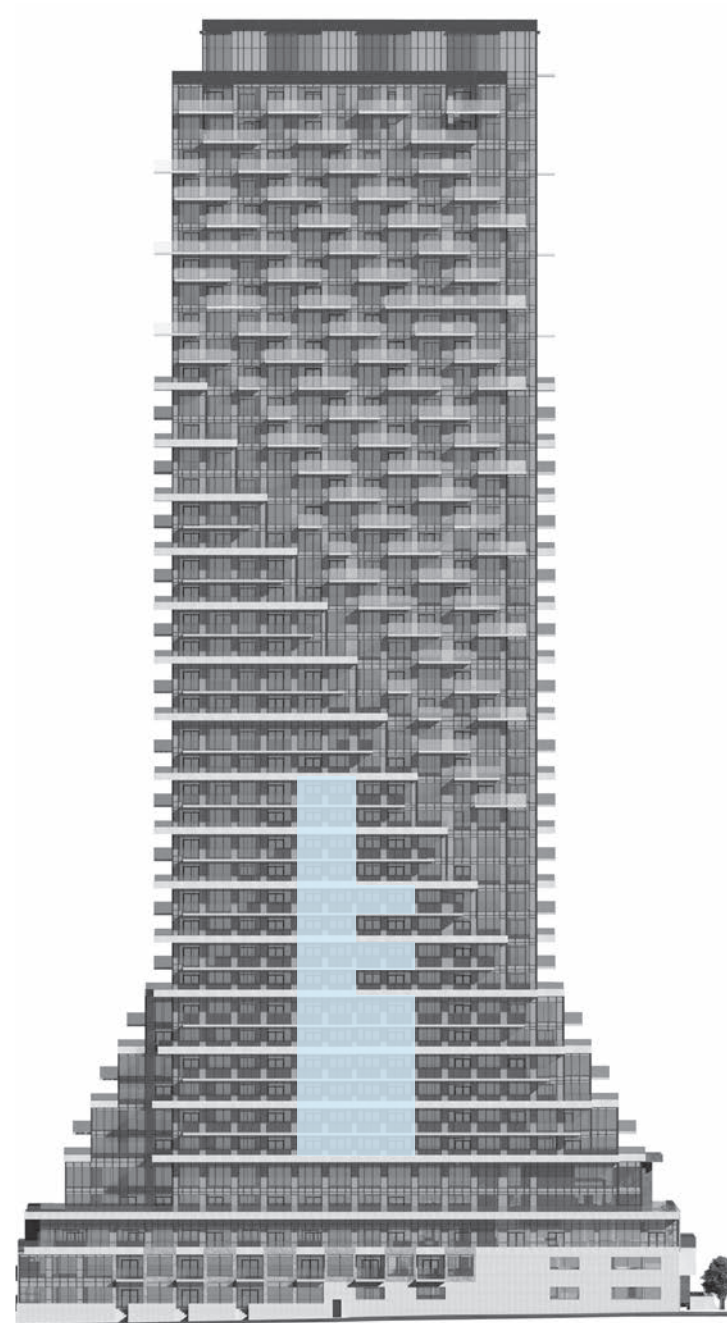
N
▲



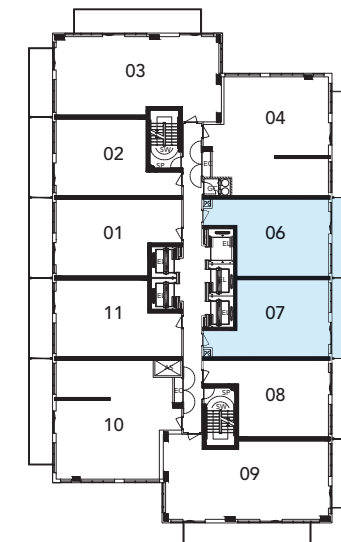
1E+D/ 1E+DR

1 BEDROOM + DEN
1 BATHROOM

44

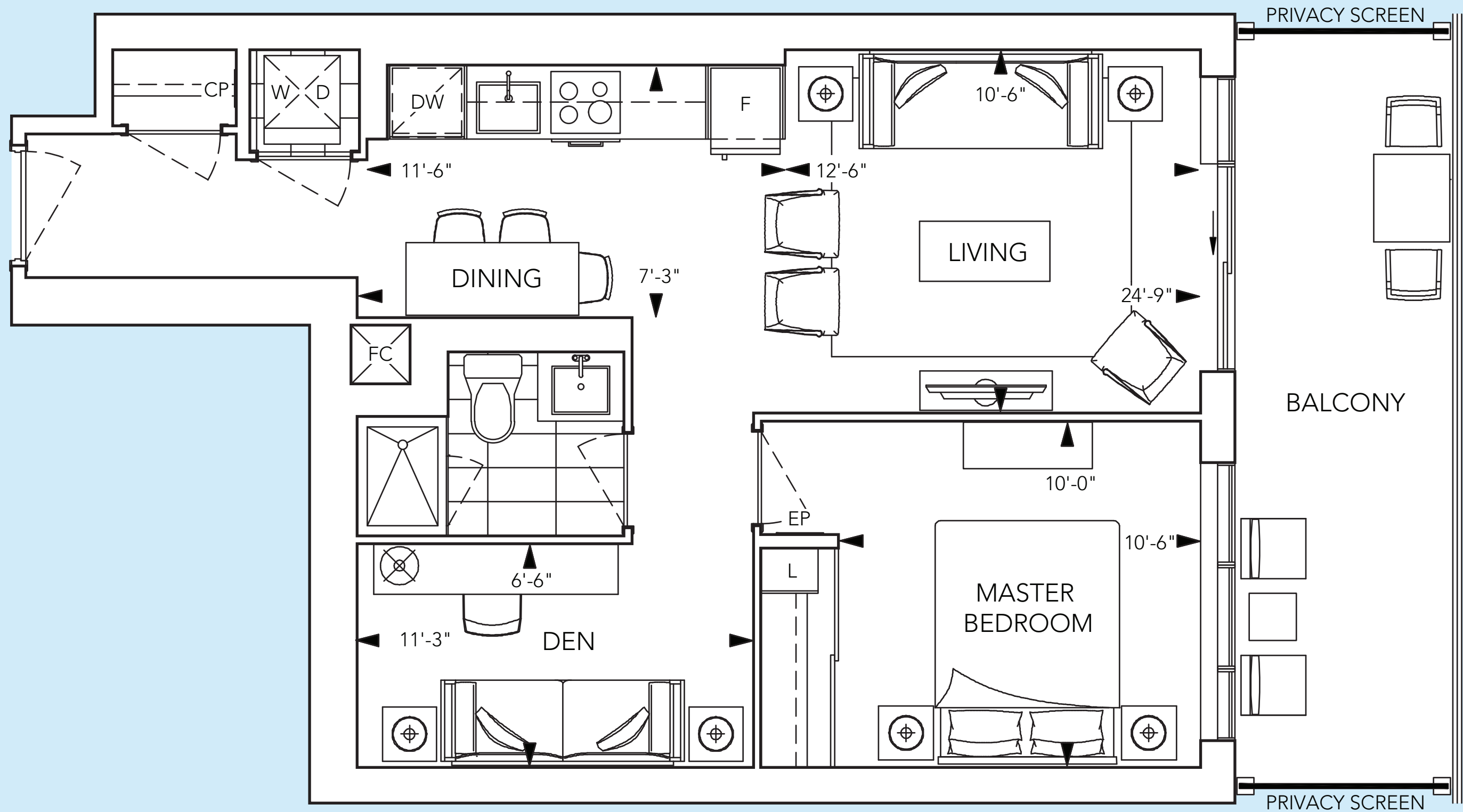


EAST FACE



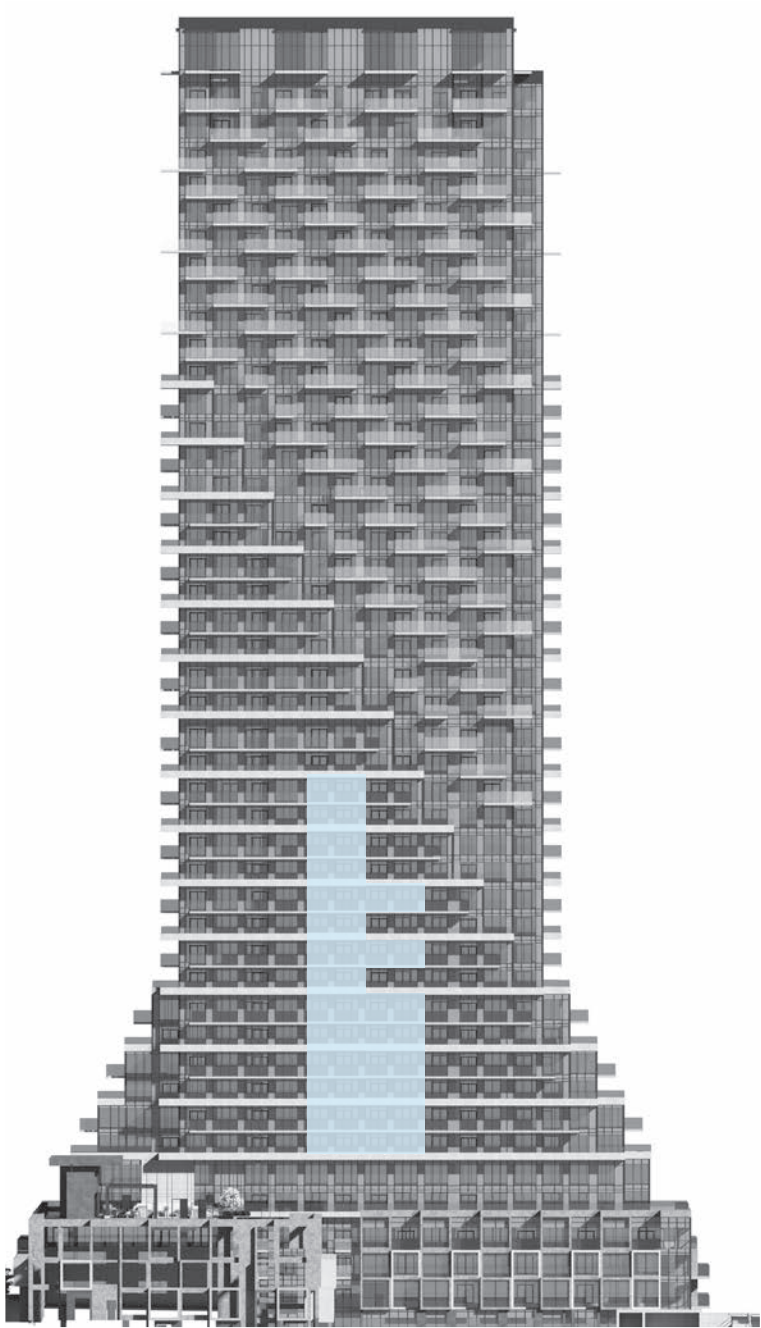
FLOOR 14

N

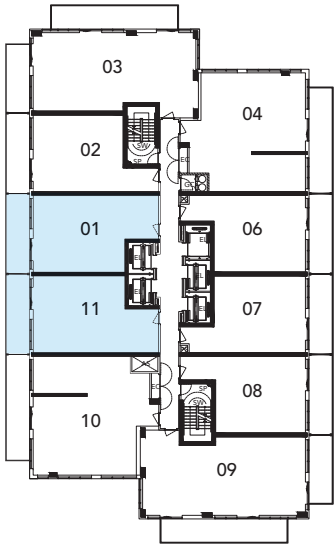


1F+D/
1F+DR

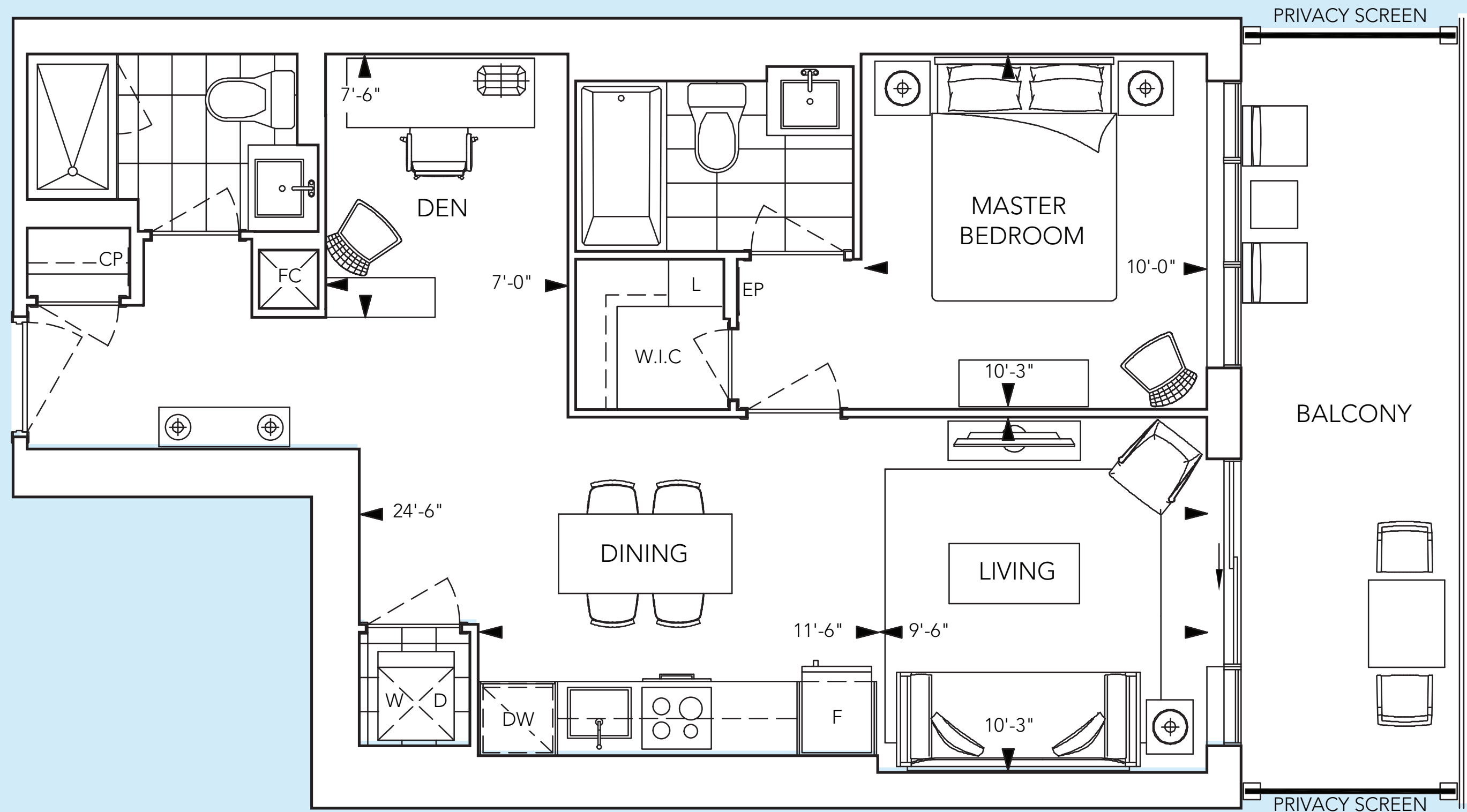
1 BEDROOM + DEN
2 BATHROOM



WEST FACE



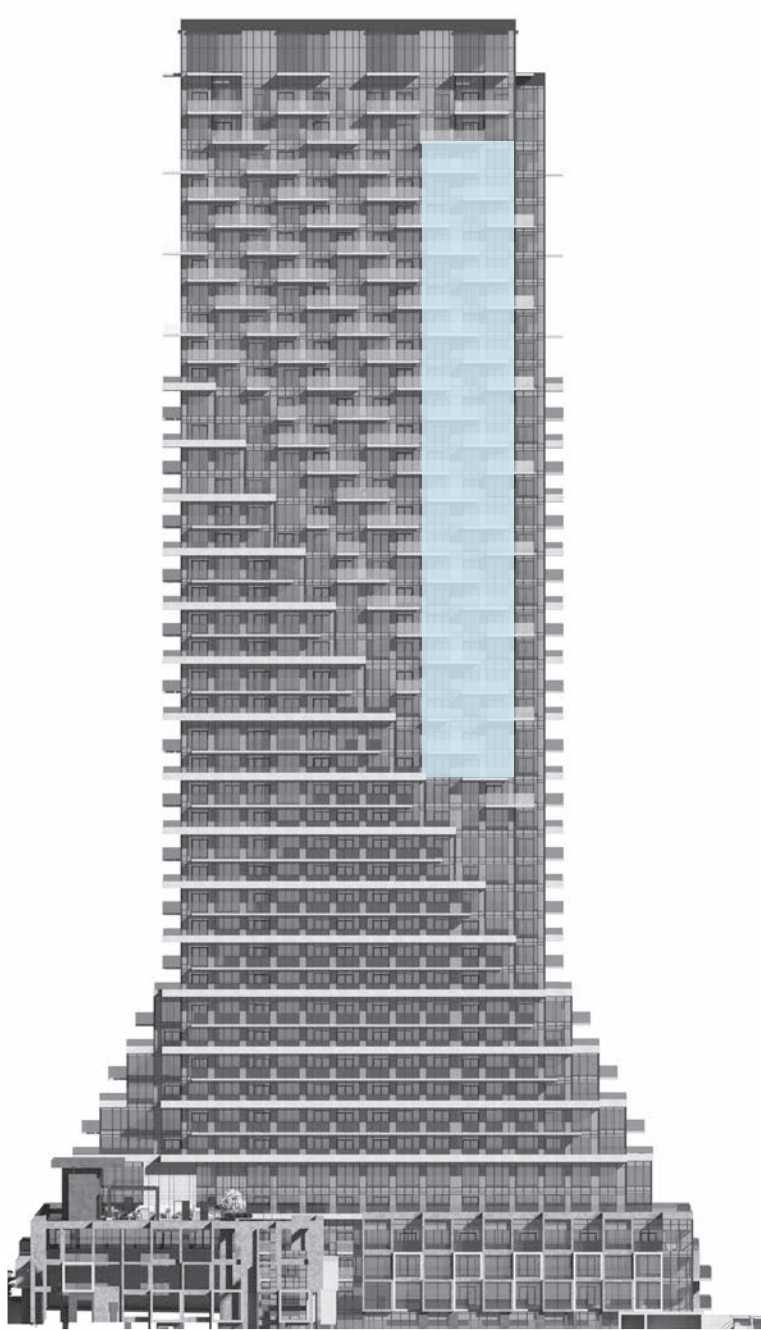
FLOOR 14



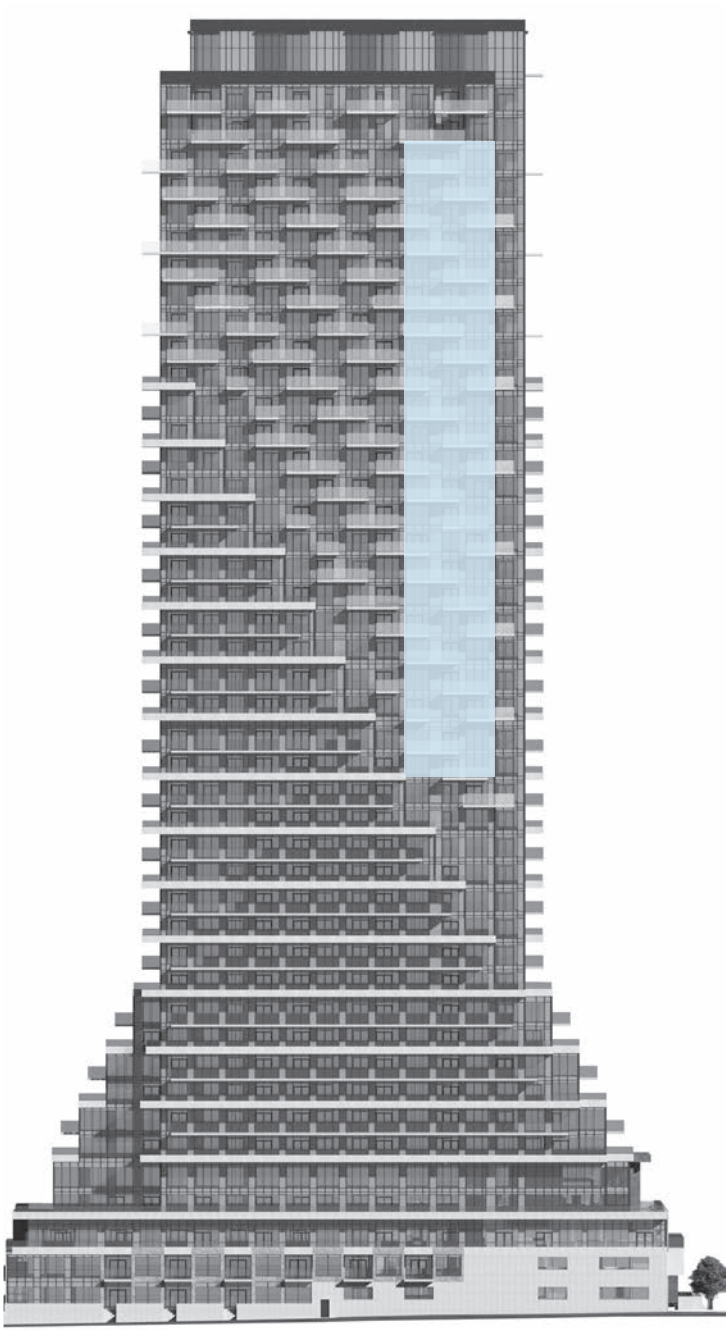
2A/2AR

2 BEDROOM
2 BATHROOM

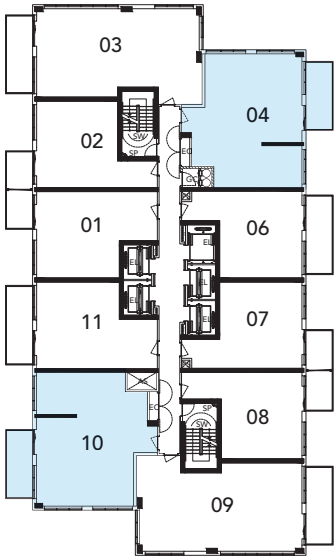
48



WEST FACE

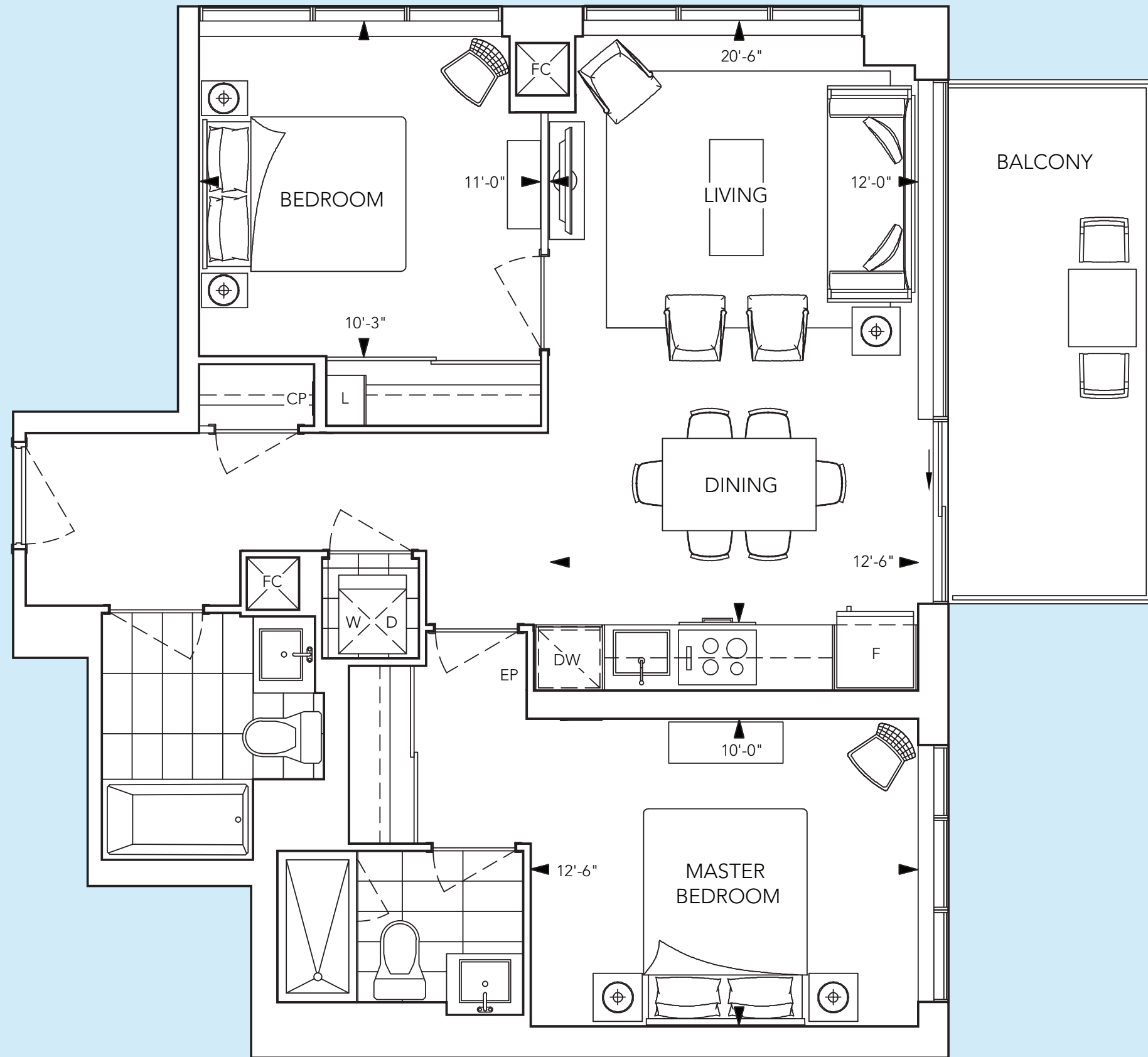


EAST FACE



FLOORS 36, 39, 42



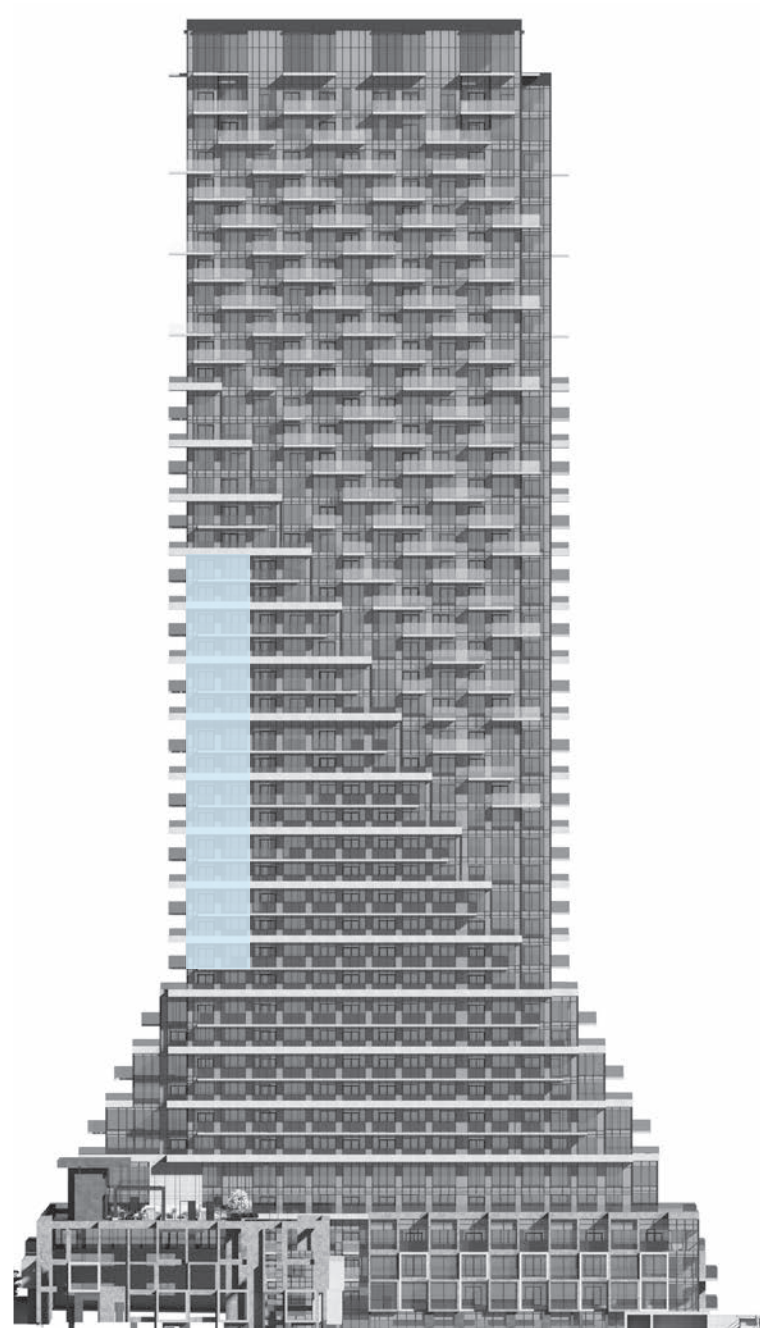


All dimensions are approximate and subject to normal construction variances. Dimensions may exceed the useable floor area. Sizes and specifications subject to change without notice. Furniture is displayed for illustration purposes only and does not necessarily reflect the electrical plan for the suite. Suites are sold unfurnished. Balcony and façade variations may apply, contact a sales representative for further details. E.&O.E. Tridel®, Tridel Built for Life® and Tridel Built Green. Built for Life® are registered trademarks of Tridel and used under license. ©Tridel 2017. All rights reserved. October 2017.

2C

2 BEDROOM
2 BATHROOM

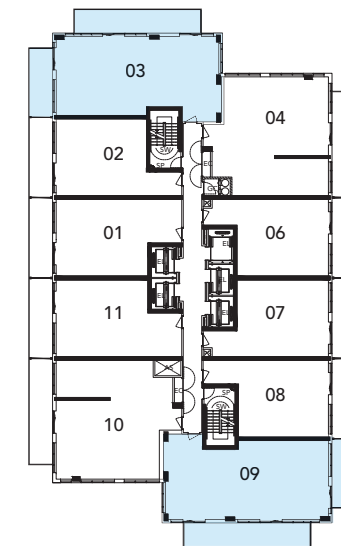
50



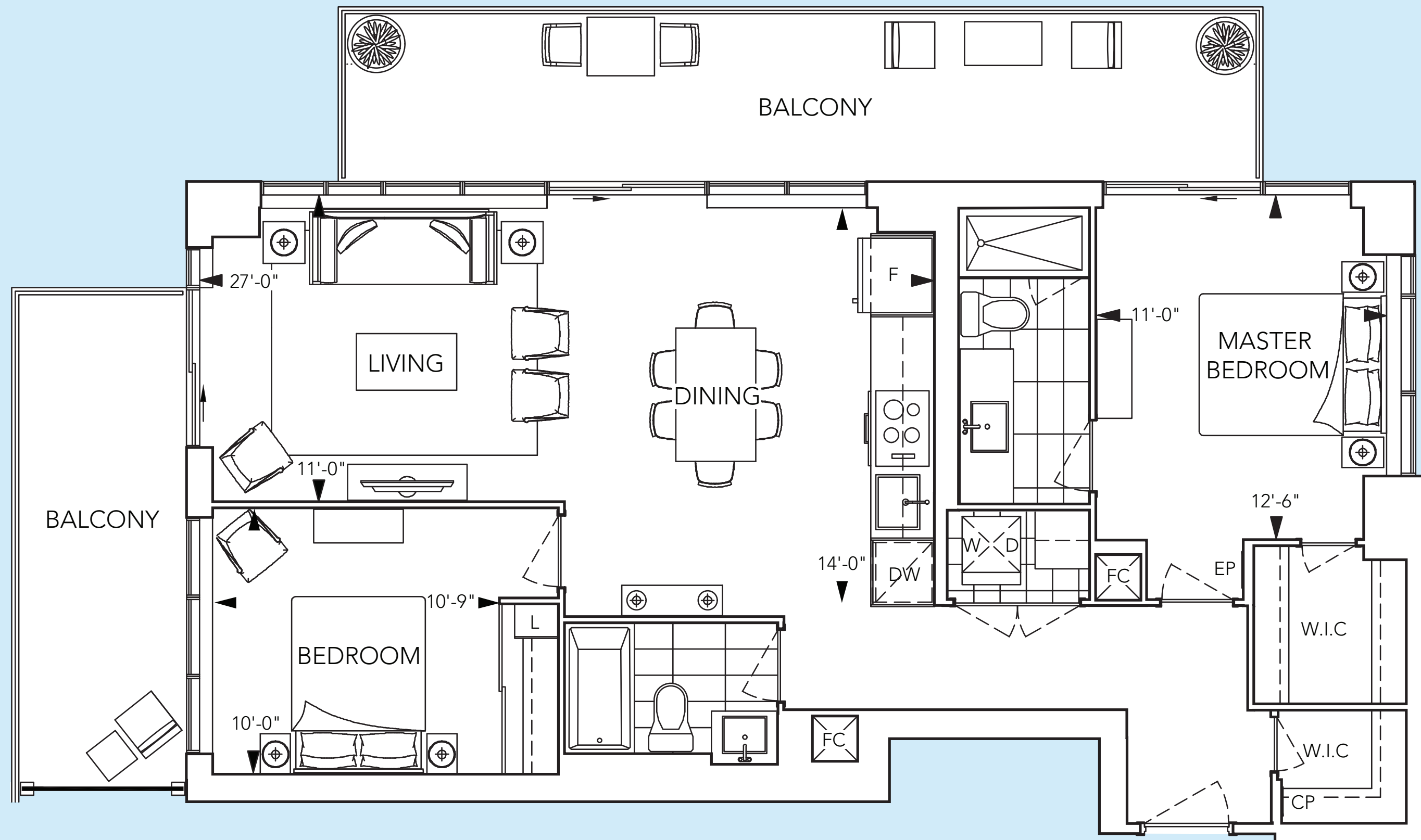
WEST FACE



NORTH FACE



FLOOR 14



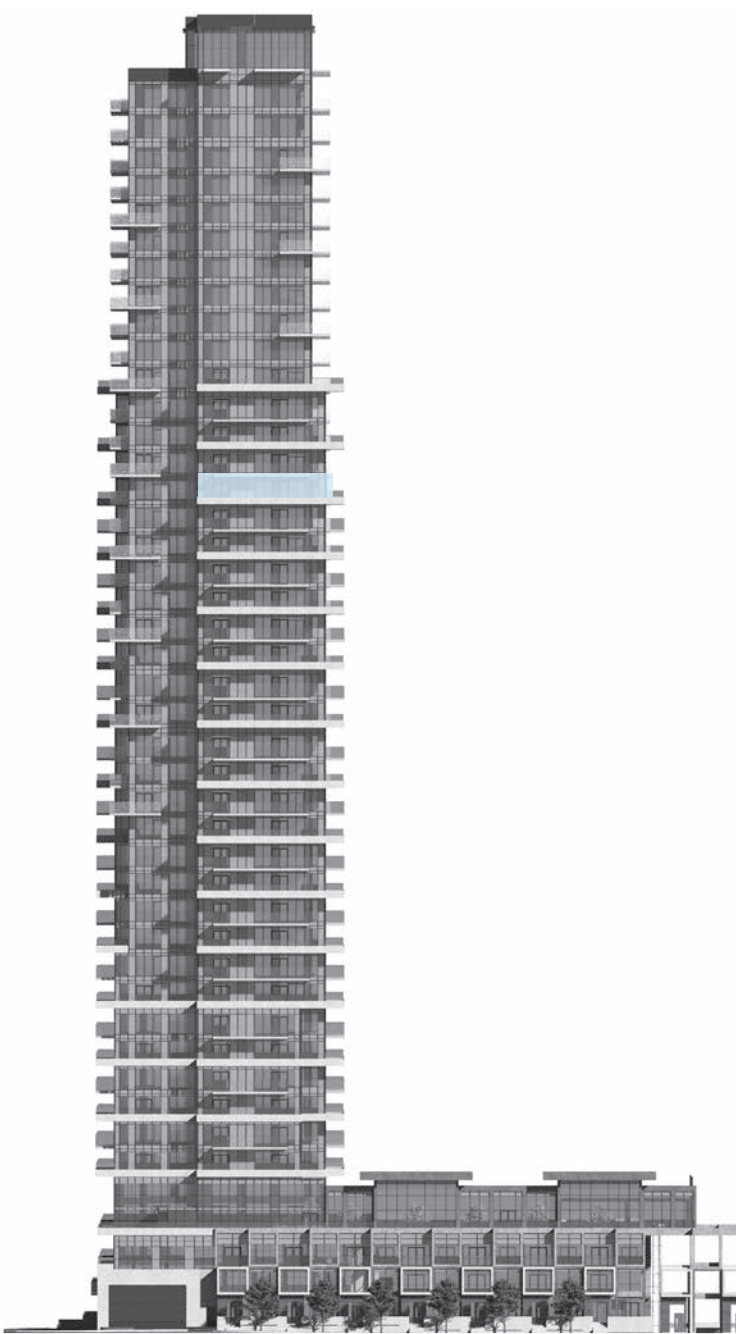
3BAT

3 BEDROOM
2.5 BATHROOM

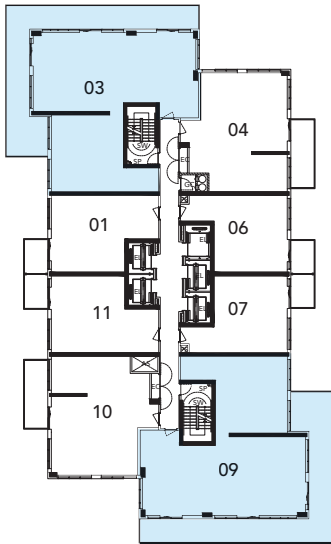
52



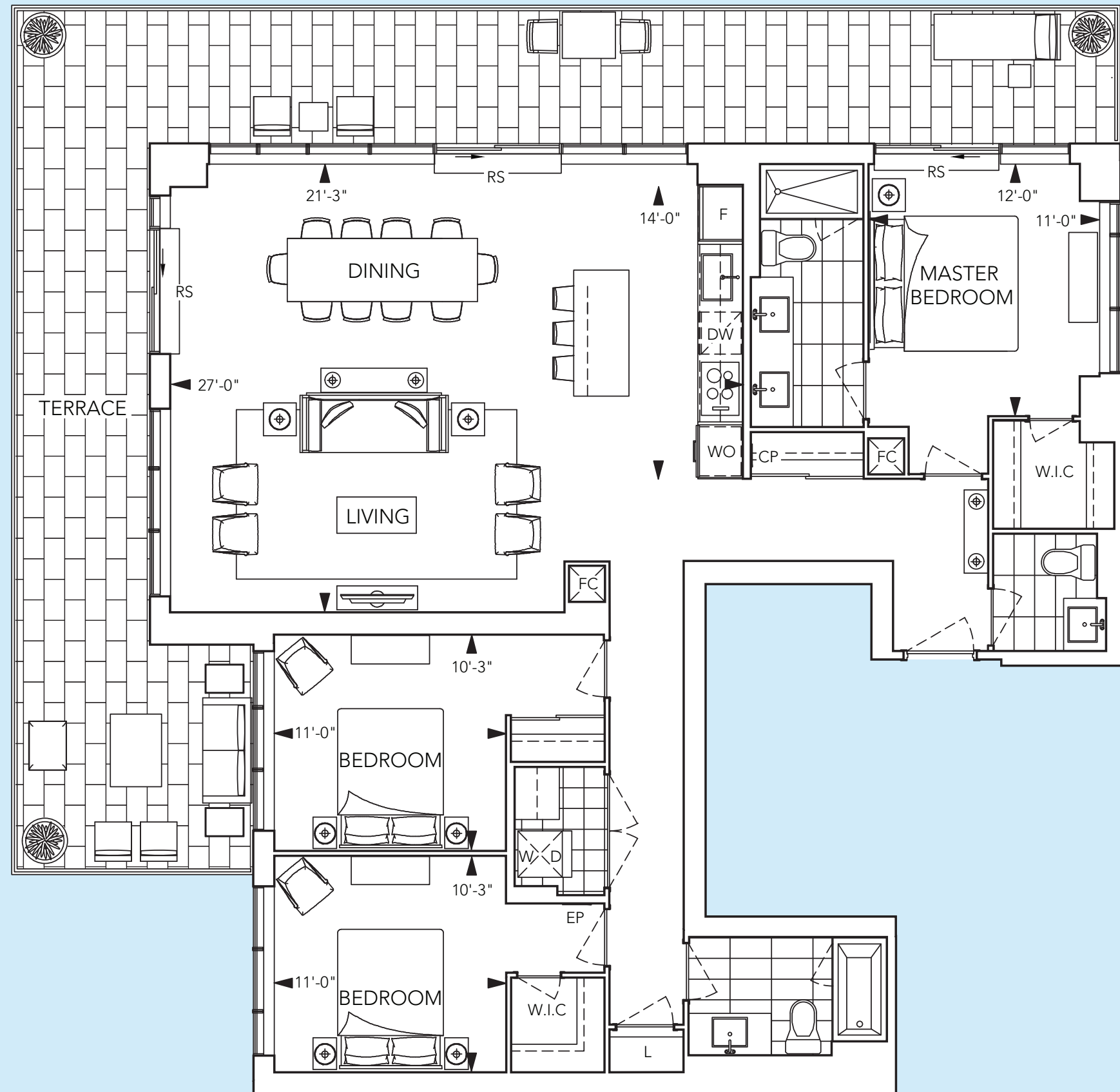
SOUTH FACE



NORTH FACE



FLOOR 31



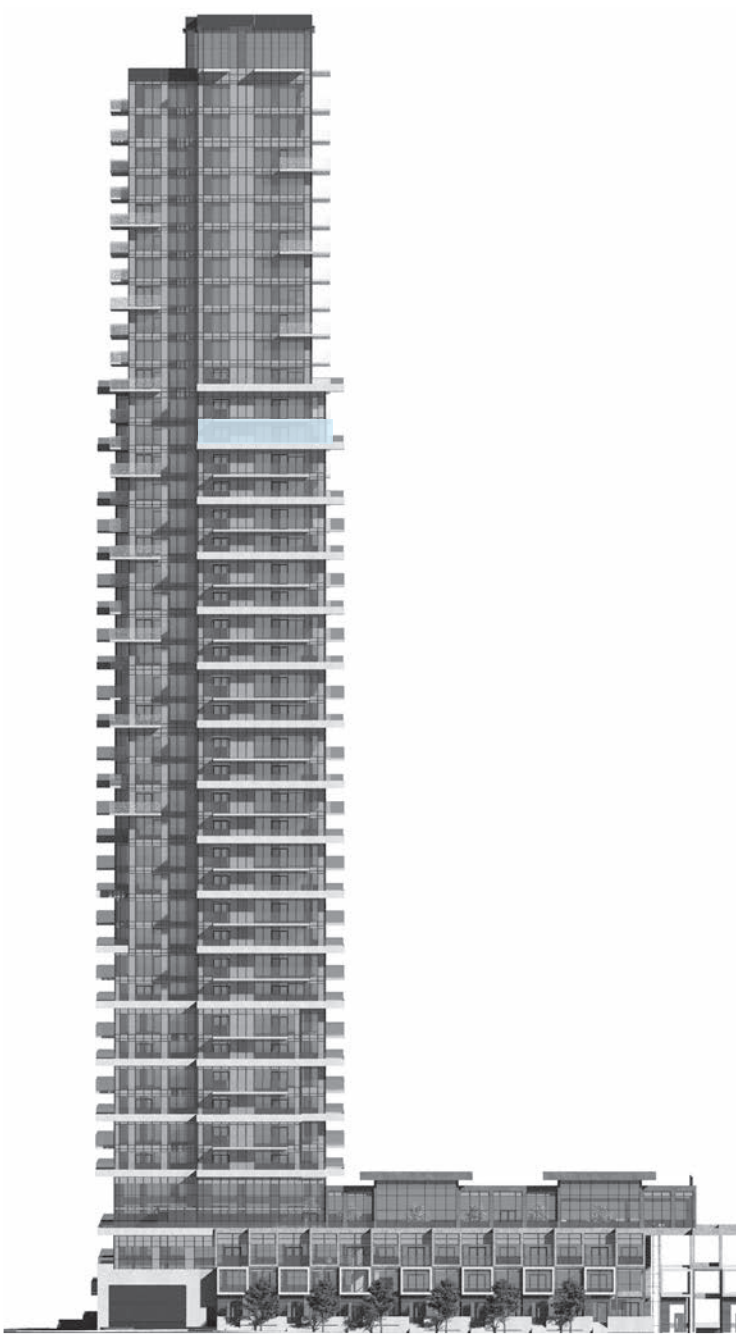
3BBT

3 BEDROOM
2.5 BATHROOM

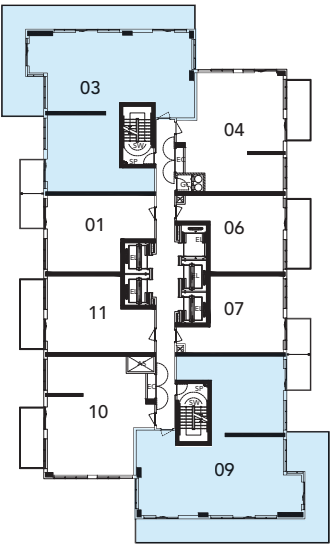
54



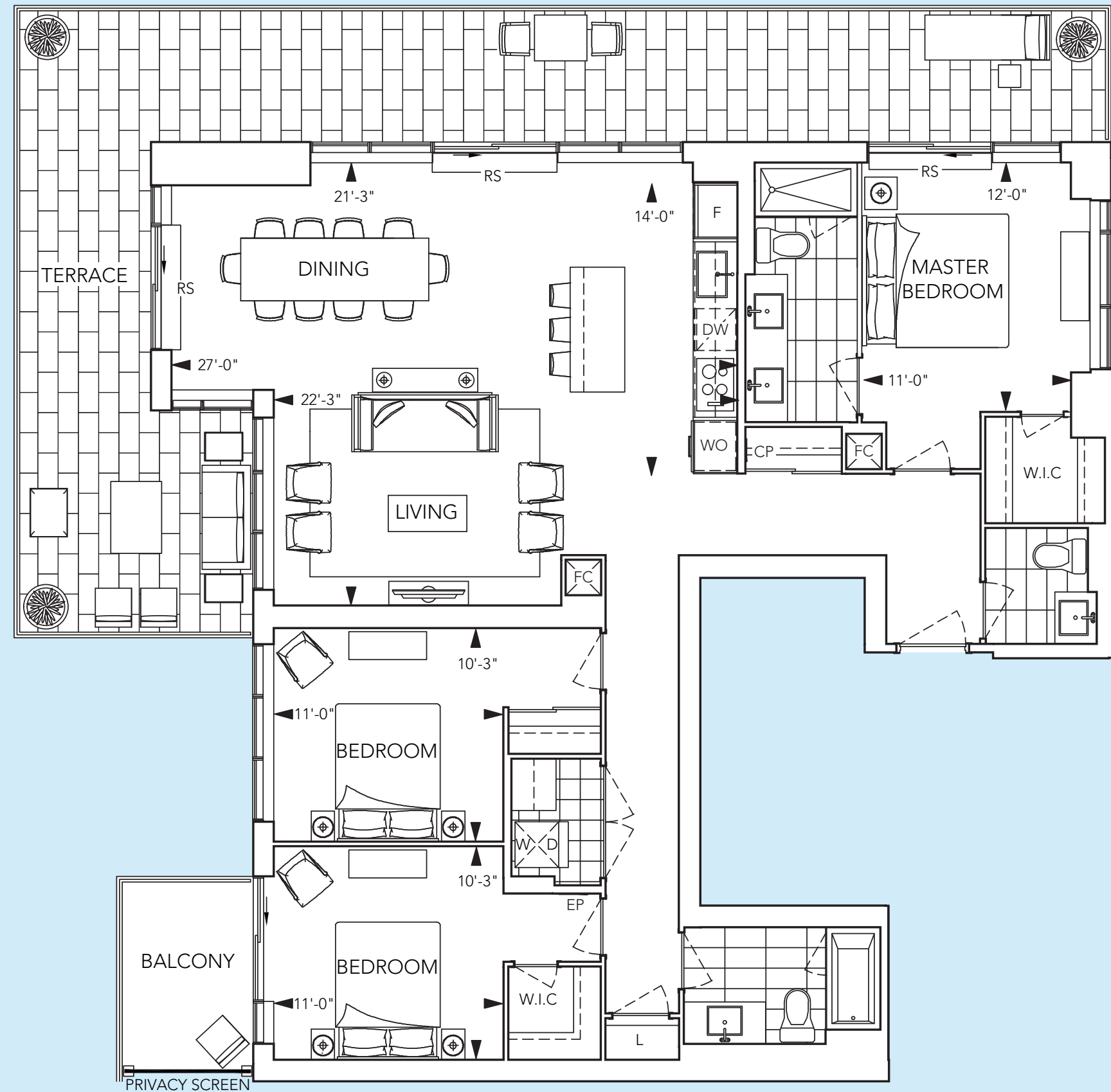
SOUTH FACE



NORTH FACE



FLOOR 33

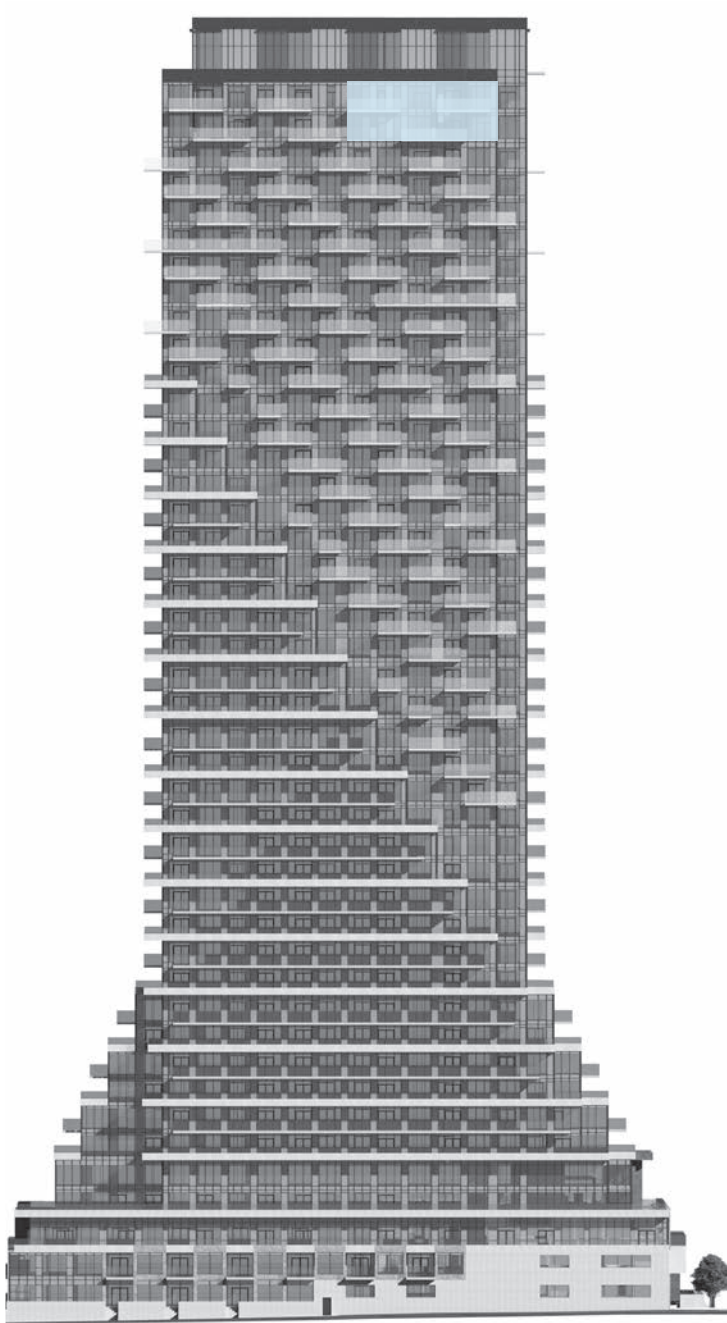


All dimensions are approximate and subject to normal construction variances. Dimensions may exceed the useable floor area. Sizes and specifications subject to change without notice. Furniture is displayed for illustration purposes only and does not necessarily reflect the electrical plan for the suite. Suites are sold unfurnished. Balcony and façade variations may apply, contact a sales representative for further details. E.&O.E. Tridel®, Tridel Built for Life® and Tridel Built Green. Built for Life® are registered trademarks of Tridel and used under license. ©Tridel 2017. All rights reserved. October 2017.

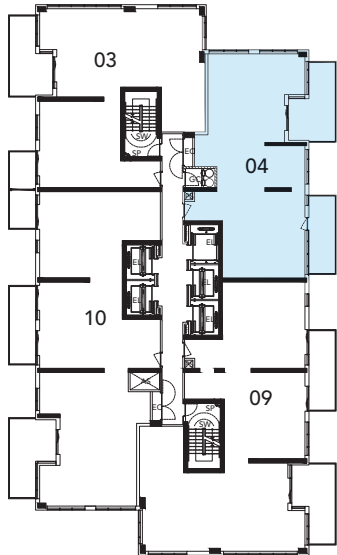
PH2A

2 BEDROOM
2.5 BATHROOM

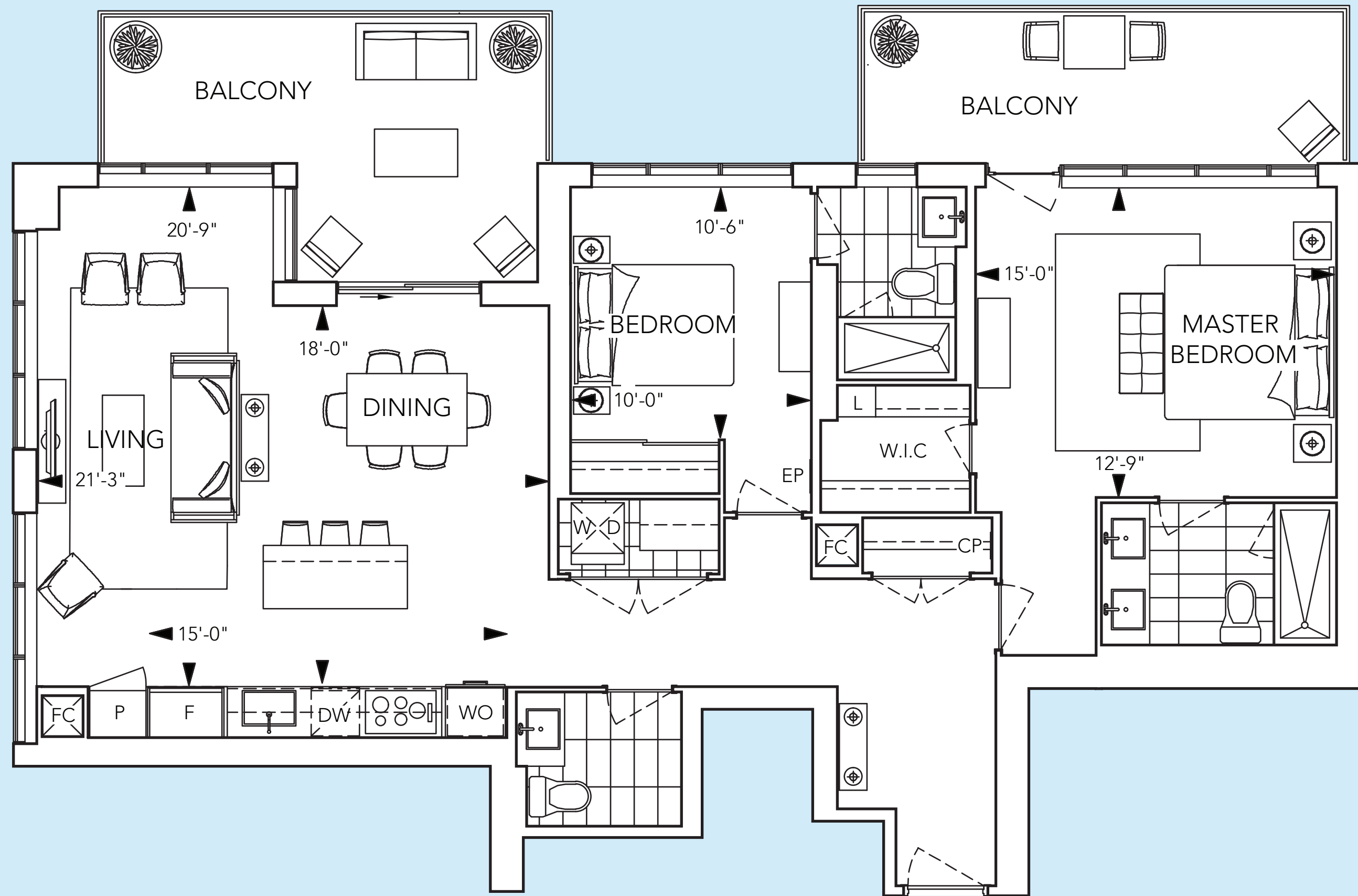
56



EAST FACE



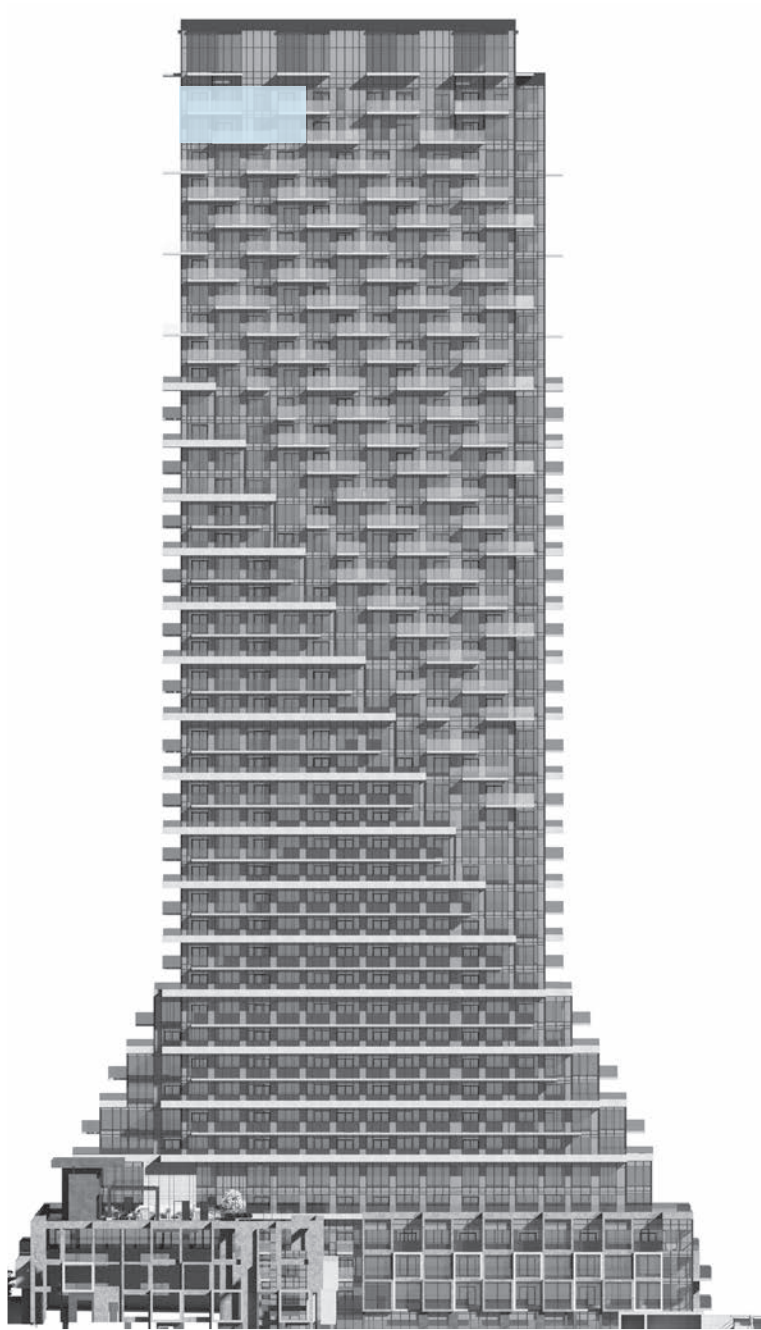
PH + GPH



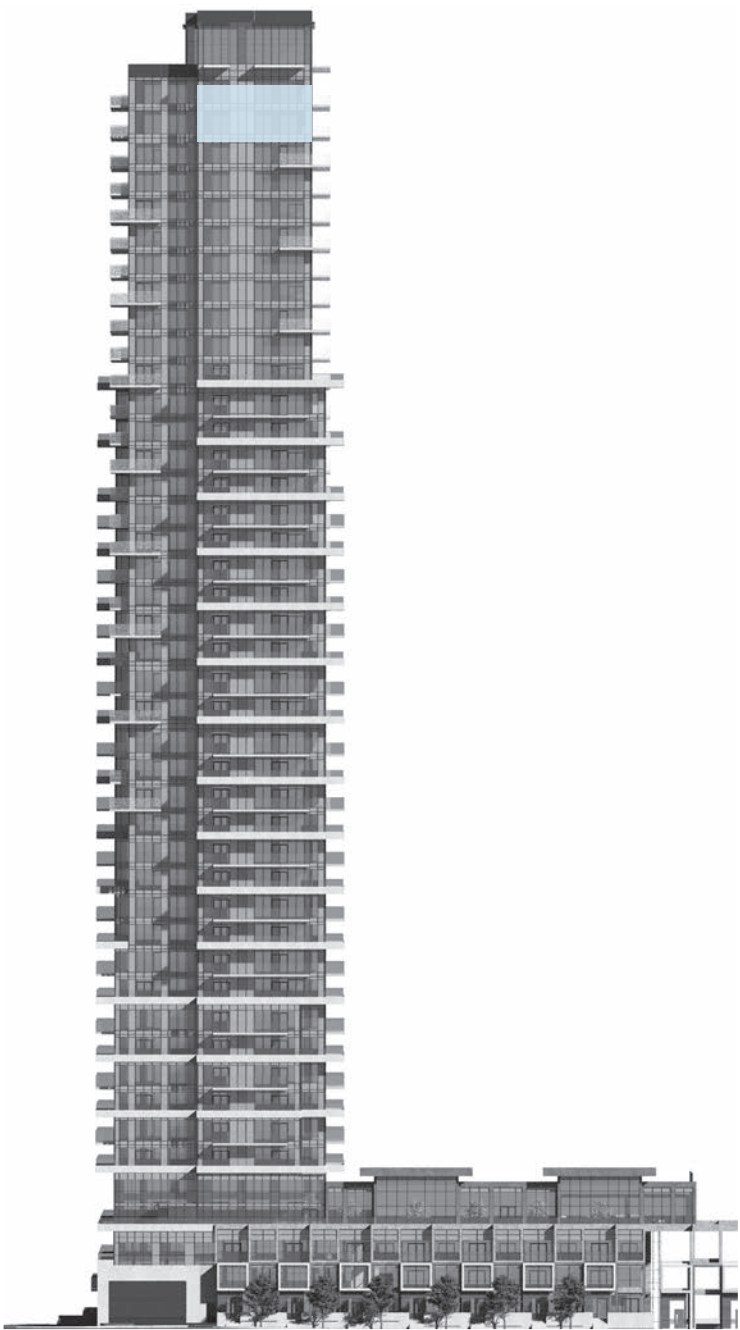
PH2B

2 BEDROOM
2.5 BATHROOM

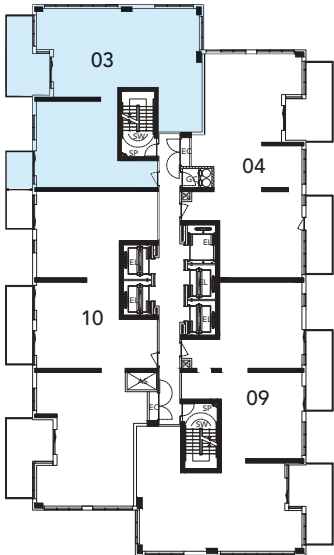
58



WEST FACE

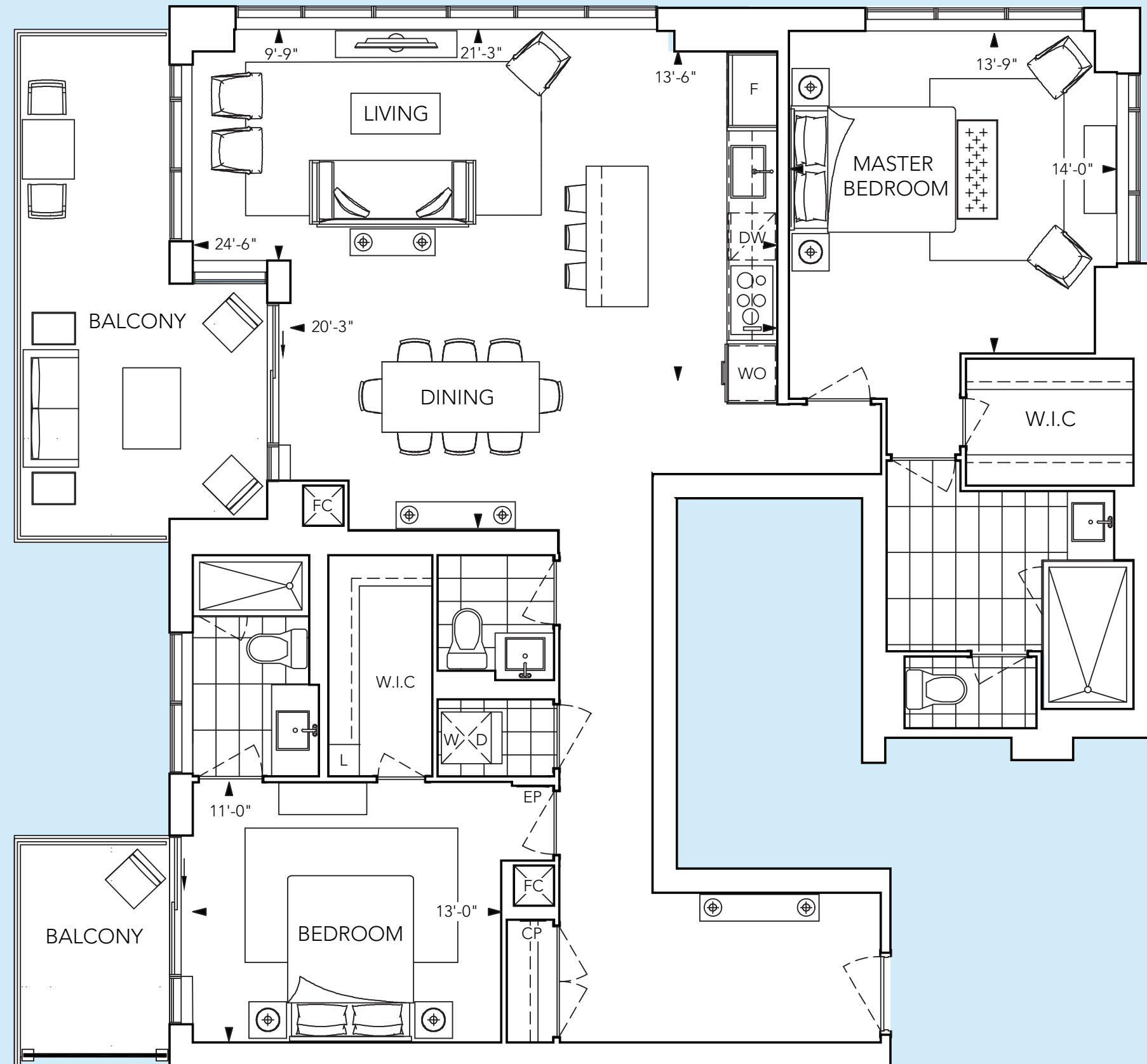


NORTH FACE



PH + GPH



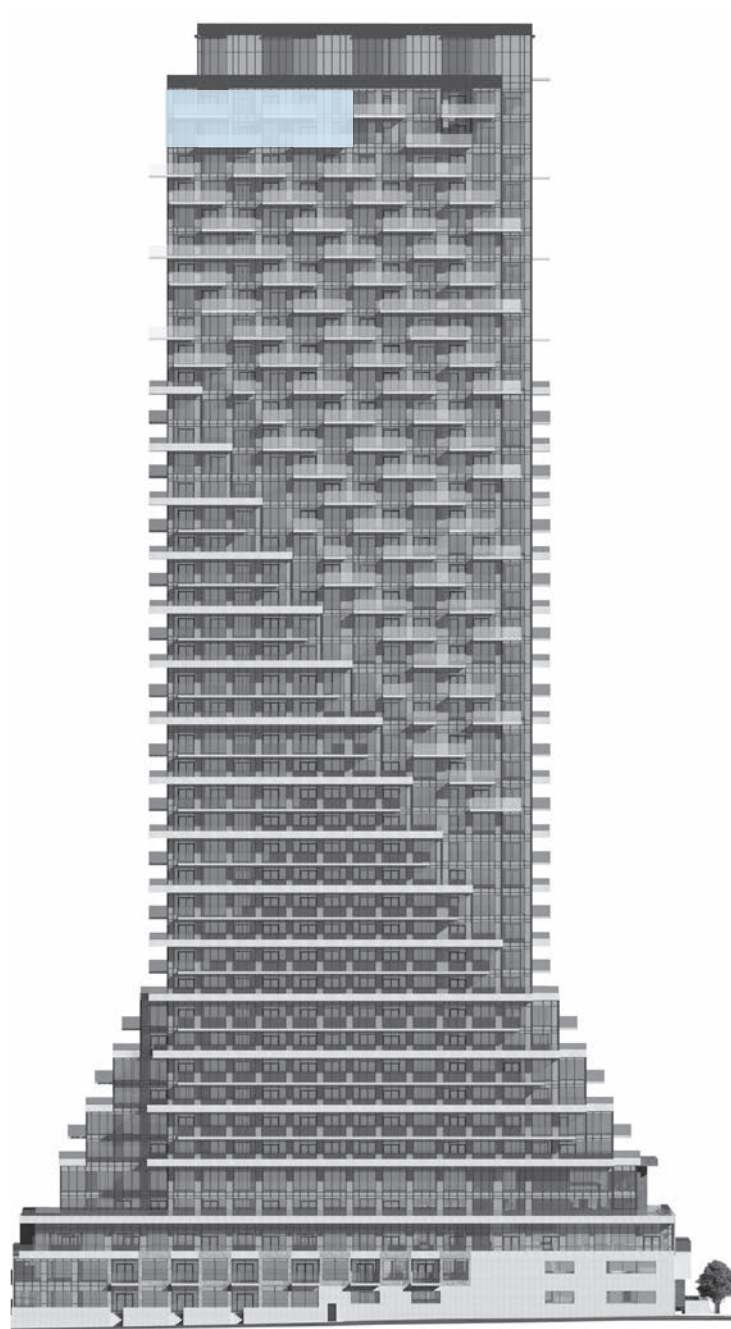


All dimensions are approximate and subject to normal construction variances. Dimensions may exceed the useable floor area. Sizes and specifications subject to change without notice. Furniture is displayed for illustration purposes only and does not necessarily reflect the electrical plan for the suite. Suites are sold unfurnished. Balcony and façade variations may apply, contact a sales representative for further details. E.&O.E. Tridel®, Tridel Built for Life® and Tridel Built Green. Built for Life® are registered trademarks of Tridel and used under license. ©Tridel 2017. All rights reserved. October 2017.

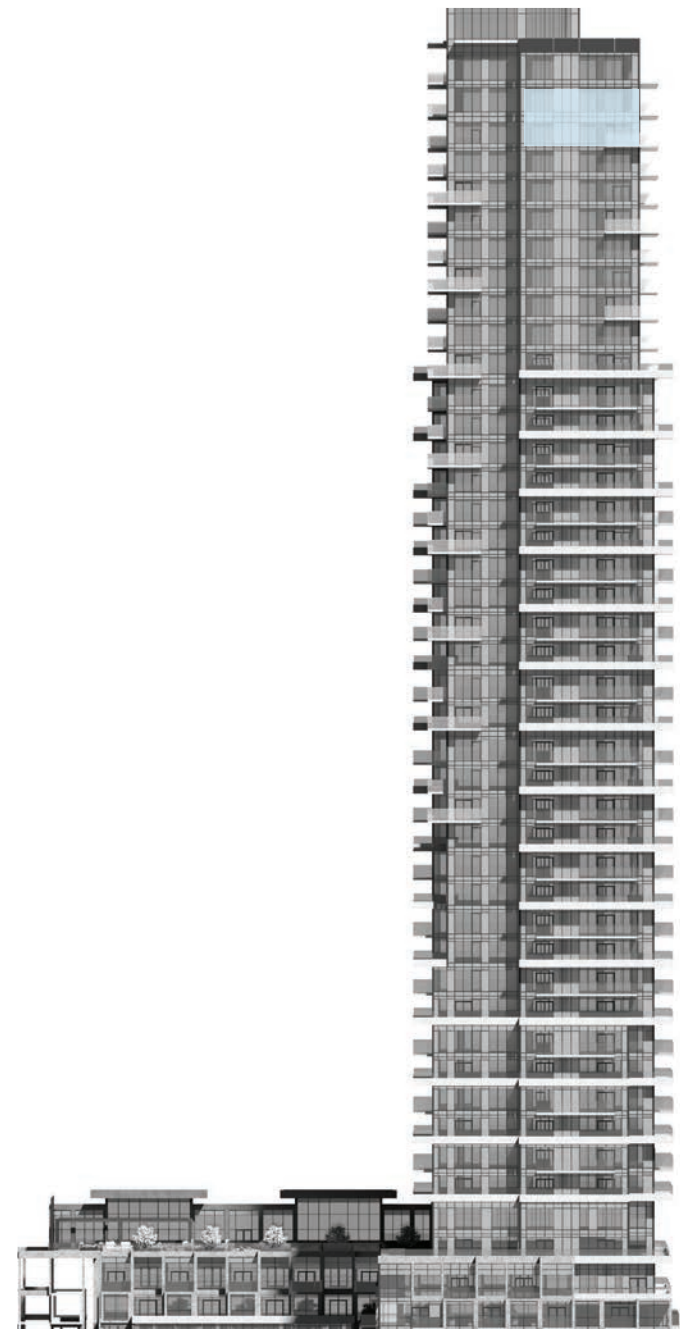
PH2B+DF

2 BEDROOM +
DEN + FAMILY ROOM
2.5 BATHROOM

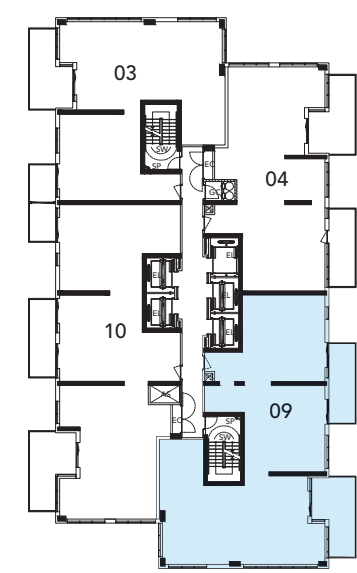
60



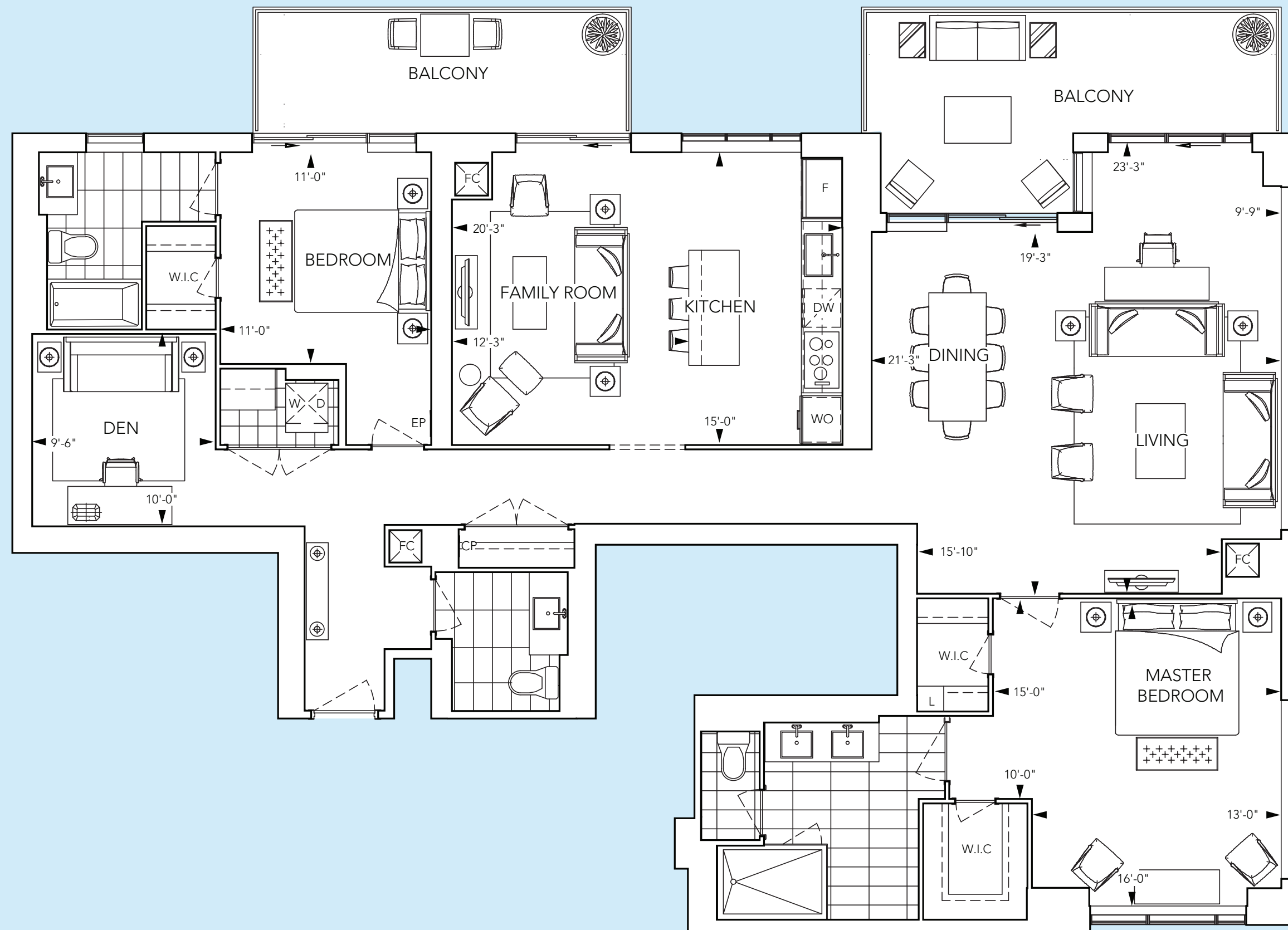
EAST FACE



SOUTH FACE

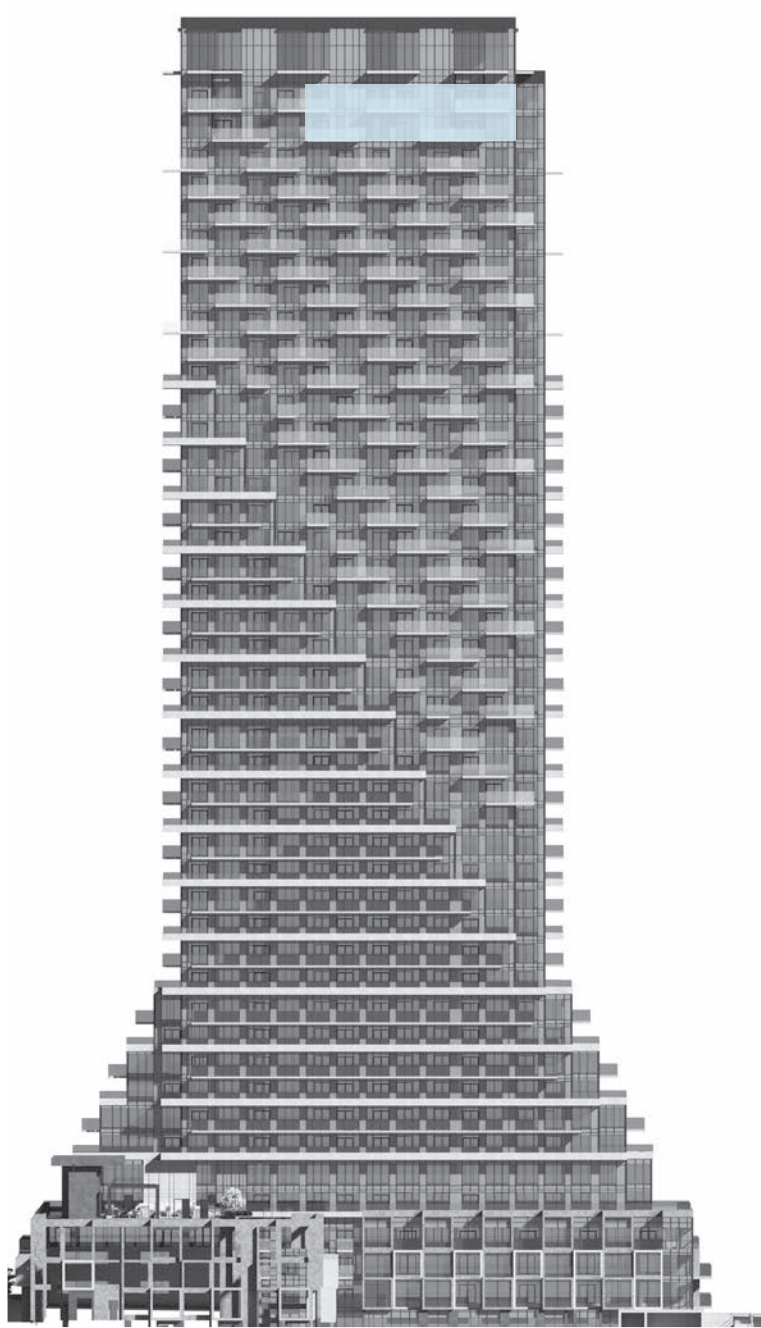


PH + GPH

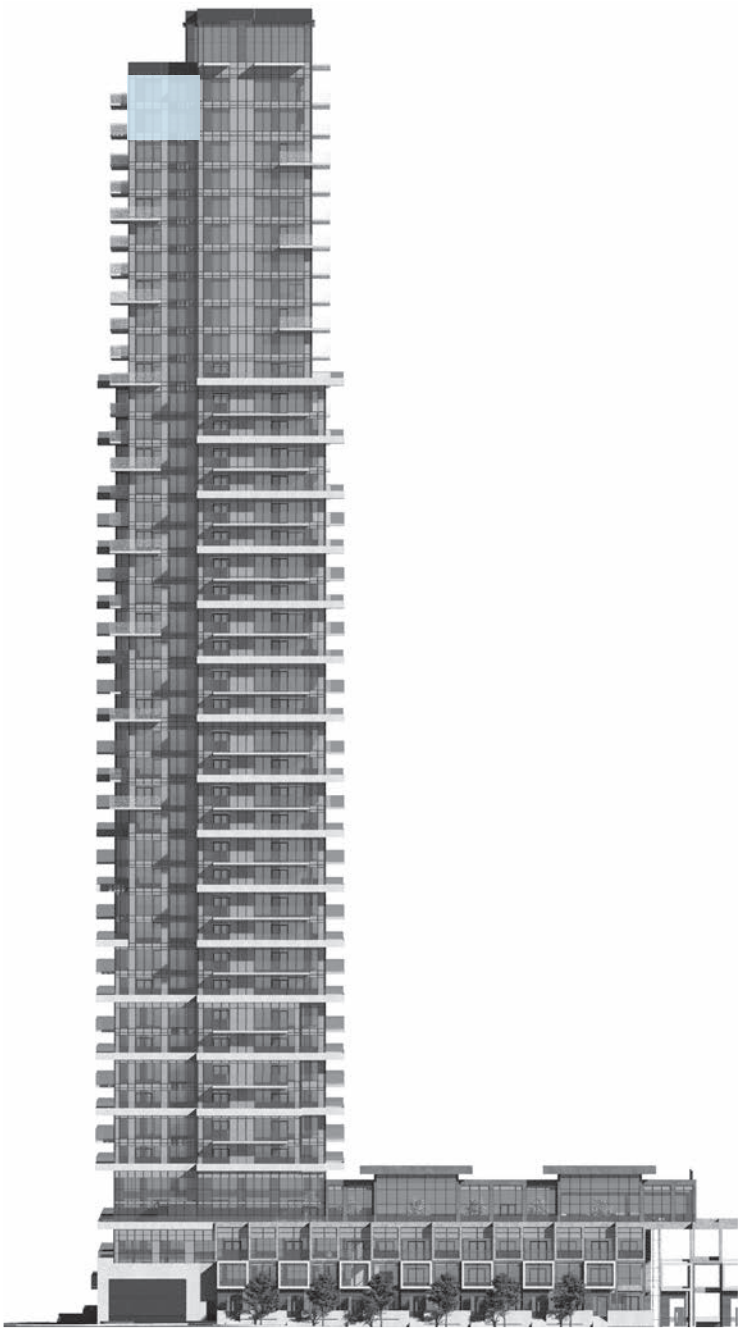


PH3A

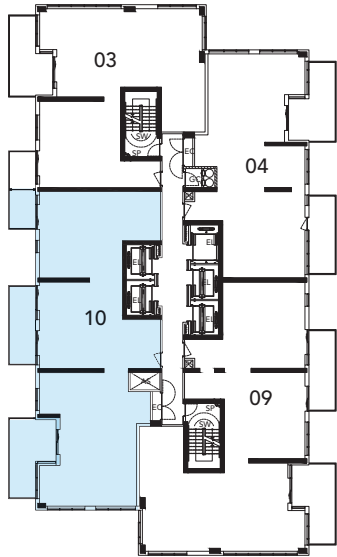
3 BEDROOM
3 BATHROOM



WEST FACE

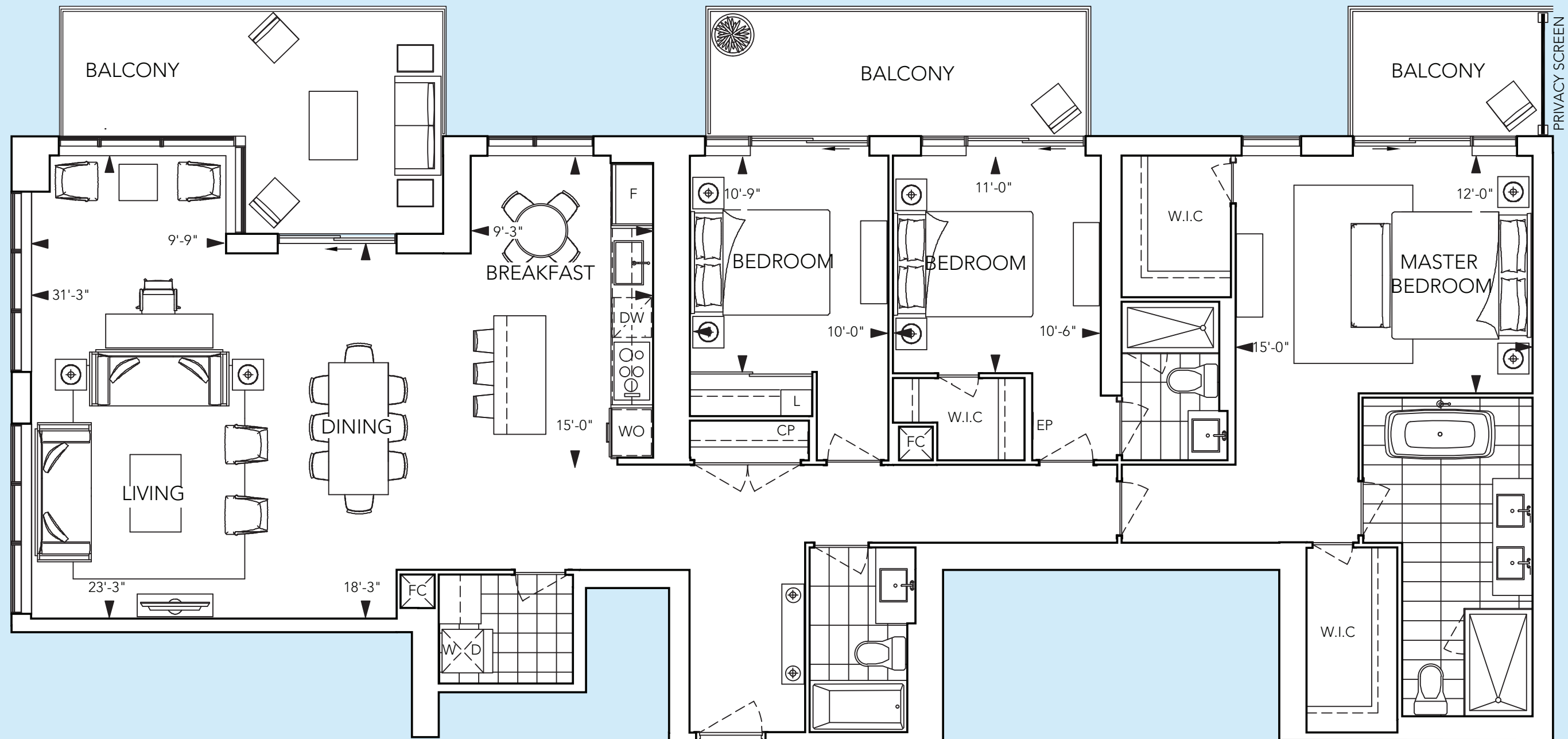


SOUTH FACE



PH + GPH







64

FEATURES & FINISHES



TYPICAL COLLECTION

GENERAL

- Smooth ceiling finish to all areas.
- Interior walls are primed and then painted with two coats of off-white, quality latex paint (bathrooms, and all woodwork and trim painted with durable white semi-gloss paint). Paints have low levels of volatile organic compounds (VOC's)
- Balconies to receive one duplex receptacle.
- Terraces to receive paving stones and one duplex receptacle.

FLOOR COVERINGS

- Premium plank laminate floating floor with acoustic underlay in all rooms excluding bathroom(s) and laundry.
- Ceramic and/or porcelain floor tile in bathroom(s).

KITCHEN

- Contemporary laminate cabinetry including upper cabinets with valence.
- Single square edge granite or engineered quartz countertop and matching slab backsplash (seams may be present in backsplash).
- Stainless steel undermount sink with low flow chrome, single lever kitchen faucet, with pull out or down spray.
- Potlights & LED valence lighting.
- 1 bedroom and 1 bedroom plus den suites will feature appliances with:
 - o 24" Energy Star high efficiency, fully integrated paneled dishwasher.
 - o 24" Energy Star stainless steel refrigerator.
 - o 24" microwave with built-in high capacity hood fan in stainless steel finish.
 - o 24" ceramic cooktop.
 - o 24" built in oven.
- 2 bedroom, 2 bedroom plus den, and 3 bedroom suites will feature appliances with:
 - o 24" Energy Star high efficiency, fully integrated paneled dishwasher.
 - o 30" Energy Star stainless steel refrigerator.
 - o 30" microwave with built-in high capacity hood fan in stainless steel finish.
 - o 30" slide-in range.

BATHROOMS

- Vanity cabinetry including solid surface top with integrated basin and backsplash.
- Mirror with integrated light.
- Potlight over tub(s), shower(s), and vanity.
- White soaker bathtub.
- Frameless glass shower enclosure with chrome hardware.
- Low flow chrome, single lever sink faucets and low flow chrome, high pressure showerheads.
- Temperature controlled and pressure balanced, chrome shower faucet.
- Porcelain or ceramic tiles in shower and/or tub enclosure.

LAUNDRY

- Stacked front loading white dryer and Energy Star, high efficiency, front loading white washer (complete with stainless steel flexible hoses).

SIGNATURE COLLECTION

GENERAL

- Smooth ceiling finish to all areas.
- Interior walls are primed and then painted with two coats of off-white, quality latex paint (bathrooms, and all woodwork and trim painted with durable white semi-gloss paint). Paints have low levels of volatile organic compounds (VOC's)
- Balconies to receive one duplex receptacle.
- Terraces to receive paving stones and one duplex receptacle.
- Two-storey suites with stairs (where indicated on floorplan) will feature contemporary wood stair-case with metal pickets and handrail.

FLOOR COVERINGS

- Engineered hardwood floating floor with acoustic underlay in all rooms excluding powder room(s), bathroom(s) and laundry.
- Porcelain or natural stone floor tile in master ensuite and powder room(s).
- Porcelain floor tile in laundry, storage areas and other bathroom(s).

KITCHEN

- Contemporary laminate and/or wood composite cabinetry including upper cabinets with valence.
- Double square edge granite or engineered quartz countertop with matching granite or engineered quartz slab backsplash (seams may be present in backsplash).
- Stainless steel undermount sink and low flow chrome, single lever kitchen faucet with pull out or down spray.
- Potlights & LED valence lighting.
- Signature suites (with the exception of suites on PH & GPH floors) will feature appliances with:
 - o 24" Miele, Energy Star high efficiency, fully integrated paneled dishwasher.
 - o 30" Miele, Energy Star fully integrated paneled refrigerator.
 - o 30" Hood fan pull out.
 - o 30" Miele ceramic cooktop.
 - o 30" Miele wall oven.
 - o Miele stainless steel built-in microwave.

- PH & GPH suites will feature appliances with:
 - o 24" Miele, Energy Star high efficiency, fully integrated paneled dishwasher
 - o 36" Miele Energy Star fully integrated paneled refrigerator.
 - o 36" Hood fan pull out.
 - o 36" Miele ceramic cooktop.
 - o 30" Miele wall oven.
 - o Miele stainless steel built-in microwave.

BATHROOMS

- Vanity cabinetry including single polished square edge natural stone or quartz countertop with white basin.
- Medicine cabinet with integrated mirror in master ensuite and main bathroom.
- Framed mirror in powder room(s).
- Integrated vanity mirror lighting with potlight over tub, shower, and vanity.
- White soaker bathtub with fixed glass tub screen.
- Frameless glass shower enclosure with chrome hardware.
- Low flow chrome, wide spread faucet in master ensuite and powder room.
- Single lever faucet in all other bathroom(s), and integrated low flow chrome, high pressure showerhead and handheld.
- Temperature controlled and pressure balanced, chrome shower faucet.
- Porcelain or natural stone tiles in shower or tub enclosure and on vanity wall in master ensuite.
- Porcelain tiles in shower or tub enclosure and on vanity wall of all other bathroom(s), excluding powder room(s).

LAUNDRY

- Stacked or side-by-side front loading white dryer and Energy Star, high efficiency, front loading white washer (complete with stainless steel flexible hoses).

All features and finishes subject to change without notice, E.&O.E October 2017.

TECH IT OUT

When living a busy modern lifestyle, it can be easy to forget about the little things, like your keys. Or setting the right temperature in your home. Or checking the weather before you step outside. The Smart Suite system at Auberge takes care of all that for you.



SECURITY

The Smart Suite alarm system connects to your smart phone and the concierge station, so you can feel safe 24/7. Plus, surveillance cameras are monitored by the concierge and you can view the live footage on your very own Smart Suite wall pad and mobile app.



EASE

The parking garage at Auberge features an automated license plate recognition system to manage access and security into the garage, so you never have to worry about remembering your key or fob. In addition, the community has integrated electronic lockers that allow for easy management of package delivery.



CONVENIENCE

Your Smart Suite wall pad is integrated with your smart phone, allowing you to use either for inter-community video communication, energy management and more. Even your door lock can be controlled by your smart phone, or conventional key or fob if you prefer.



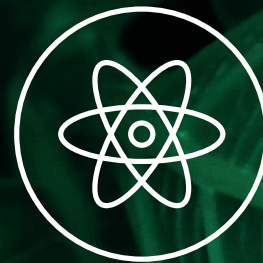


Here are a few of the reasons Auberge will be considered among the most environmentally friendly buildings in the world:



WATER

Auberge features low flow plumbing fixtures that reduce potable water consumption by over 50%. Plus, storm water cisterns capture rain for the building's plants, which are all either drought tolerant or native plantings.



ENERGY

Suites feature Energy Star appliances and ERVs (energy recovery ventilators) to help you save up to 60% on energy, while improving indoor air quality.



MATERIALS

A portion of our construction materials contain recycled content or have been locally sourced, and all of our paints and adhesives are low VOC. Plus, we aim to recycle at least 75% of our construction waste.



ELECTRIC VEHICLE ACCOMMODATIONS

Building residents will have access to electric vehicle charging stations, because we know you care about the environment as much as we do.

Putting you first, puts us first.

Winning Home Builder of The Year means a lot to us. It means we've created sustainable communities that thrive. It means we've remained true to our core values of being responsible builders. But most importantly, it means we have always built with only one goal in mind: You.

Thank you for inspiring us to build excellence.



©2017 Tridel. All rights reserved. Tridel, Tridel Built for Life, Tridel Built for Life Design, and Built Green are registered trademarks of Tridel Corporation. E. & O.E. October 2017.