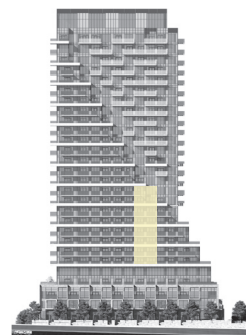
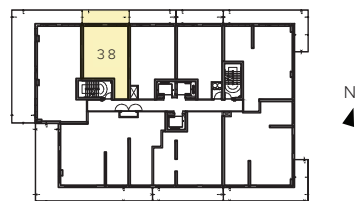


1F-2

1 BEDROOM
1 BATHROOM



NORTH FACE

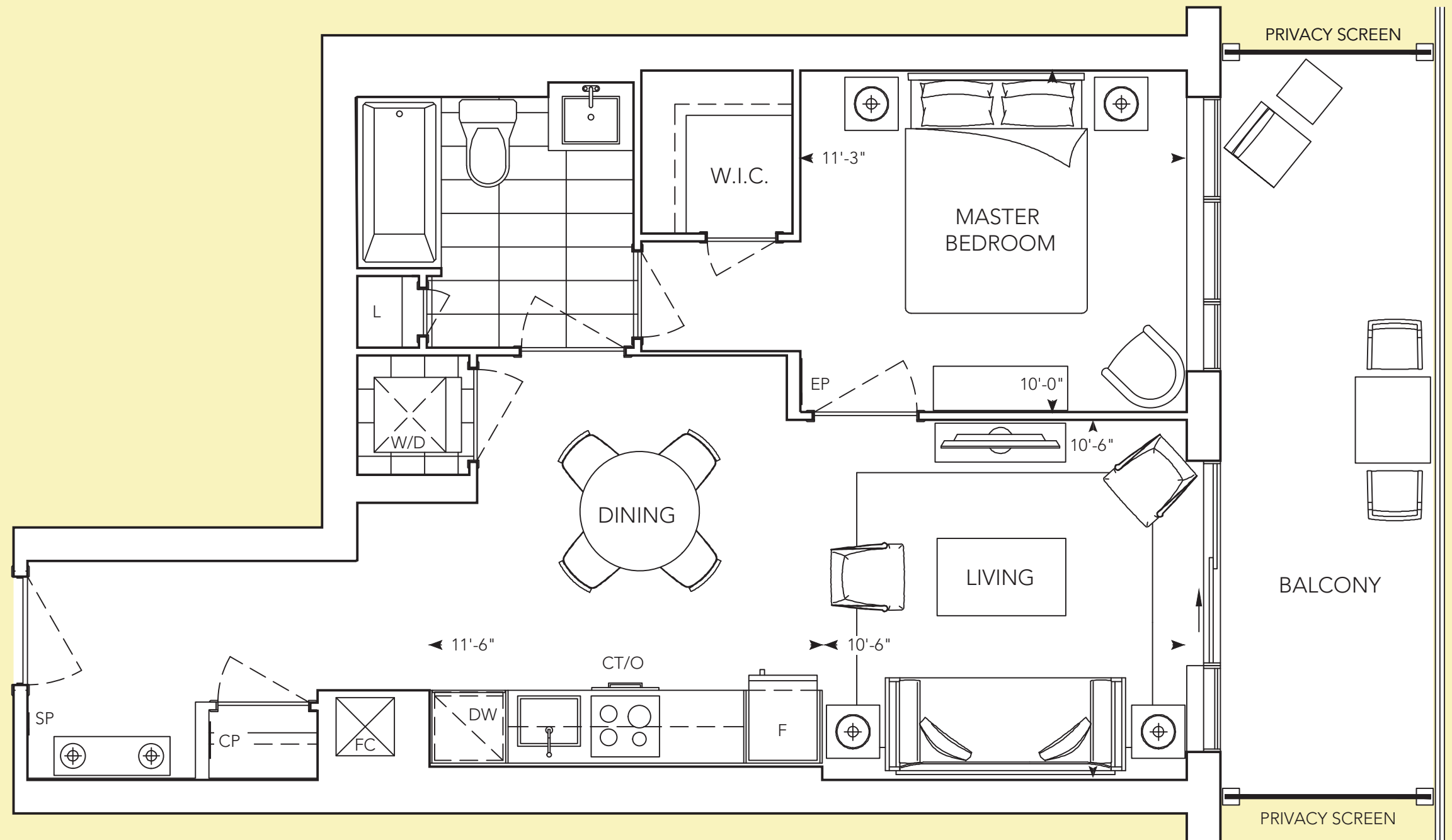


FLOOR 11

AUBERGE II ON THE PARK™

TRIDEL
BUILT FOR LIFE

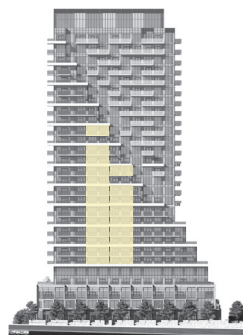
ROWNTREE
ENTERPRISES



All dimensions are approximate and subject to normal construction variances. Dimensions may exceed the useable floor area. Sizes and specifications subject to change without notice. Furniture is displayed for illustration purposes only and does not necessarily reflect the electrical plan for the suite. Suites are sold unfurnished. Balcony and façade variations may apply, contact a sales representative for further details. E.&O.E. Tridel®, Tridel Built for Life™ and Tridel Built Green. Built for Life® are registered trademarks of Tridel and used under license. ©Tridel 2018. All rights reserved. January 2018.

1J+D-2/ 1J+DA-2

1 BEDROOM + DEN
2 BATHROOM



NORTH FACE

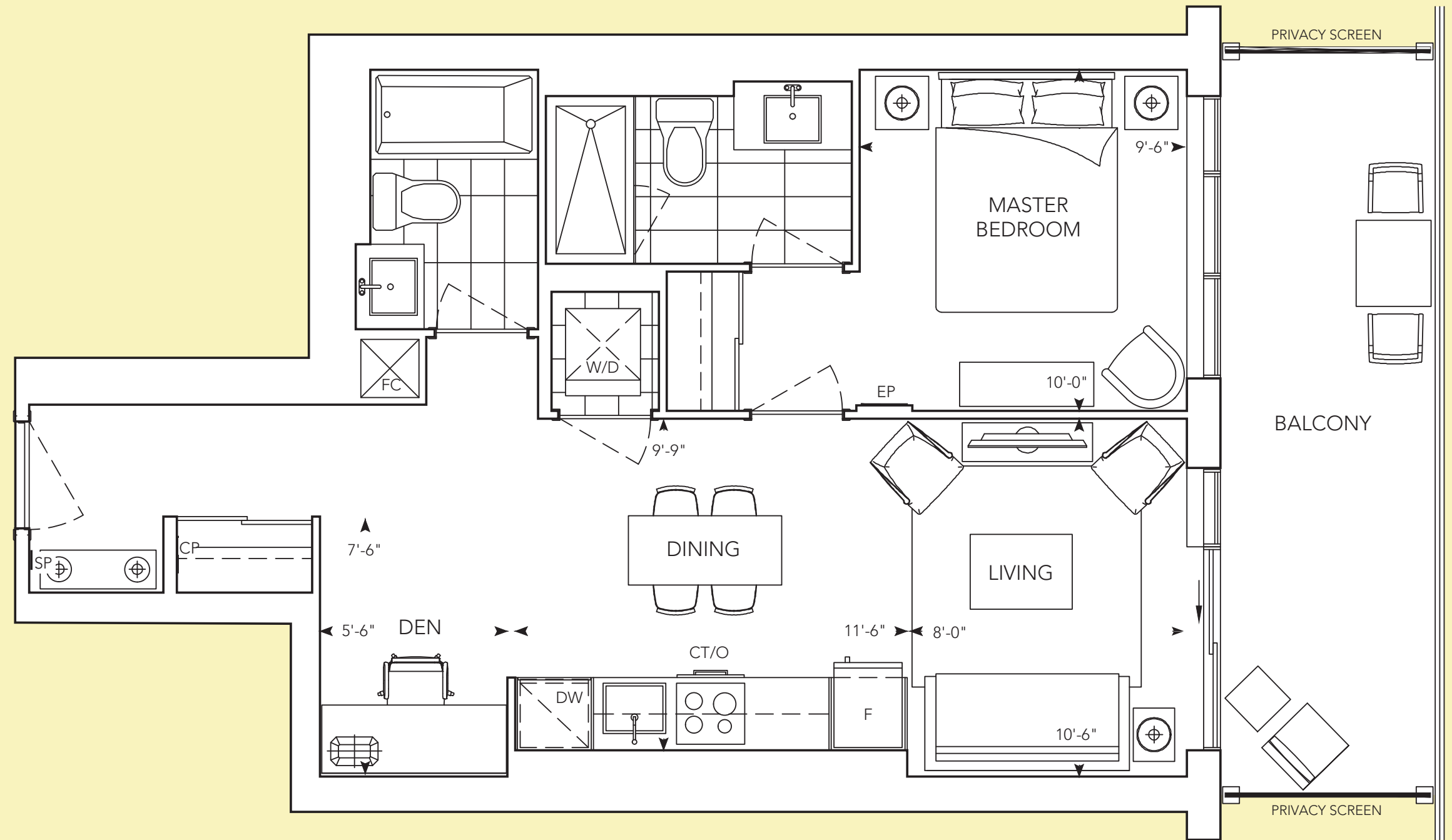


FLOOR 11

AUBERGE II ON THE PARK™

TRIDEL
BUILT FOR LIFE

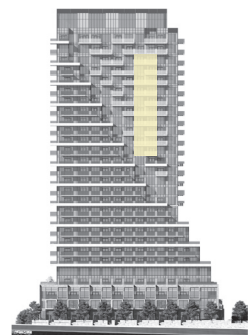
ROWNTREE
ENTERPRISES



All dimensions are approximate and subject to normal construction variances. Dimensions may exceed the useable floor area. Sizes and specifications subject to change without notice. Furniture is displayed for illustration purposes only and does not necessarily reflect the electrical plan for the suite. Suites are sold unfurnished. Balcony and façade variations may apply, contact a sales representative for further details. E.&O.E. Tridel®, Tridel Built for Life™ and Tridel Built Green. Built for Life® are registered trademarks of Tridel and used under license. ©Tridel 2018. All rights reserved. January 2018.

1A-2

1 BEDROOM
1 BATHROOM

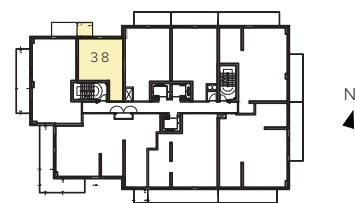


NORTH FACE

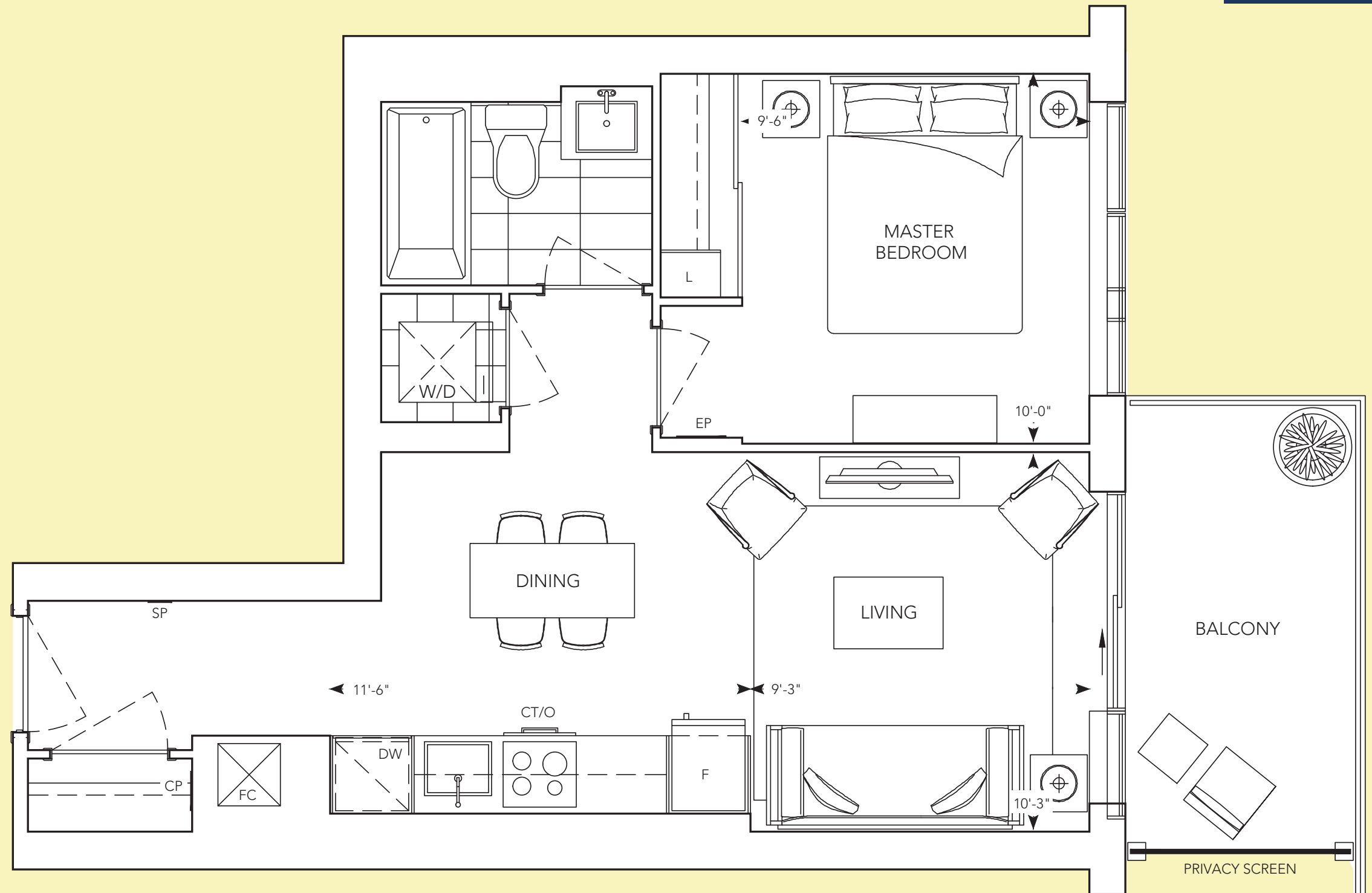
AUBERGE II ON THE PARK™

TRIDEL
BUILT FOR LIFE

ROWNTREE
ENTERPRISES



FLOOR 20



All dimensions are approximate and subject to normal construction variances. Dimensions may exceed the useable floor area. Sizes and specifications subject to change without notice. Furniture is displayed for illustration purposes only and does not necessarily reflect the electrical plan for the suite. Suites are sold unfurnished. Balcony and façade variations may apply, contact a sales representative for further details. E.&O.E. Tridel®, Tridel Built for Life™ and Tridel Built Green. Built for Life® are registered trademarks of Tridel and used under license. ©Tridel 2018. All rights reserved. January 2018.